

children's play

wood street

ATTACHMENT C

8

PERSPECTIVE OF PLAYGROUND FROM WOOD STREET



A new local playground is proposed at Wood Street, with direct surveillance from the street. Consultation with local children preceded the design process, and the playground design is richly informed by some of their enthusiastic suggestions.

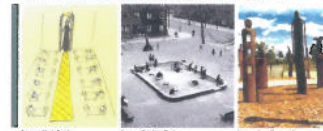
A diverse range of play experiences are proposed for children aged 1 to 12 years. A central sandpit (remindful of an orphanage dormitory) forms the central focus, surrounded by state-of-the-art equipment providing a range of play activities.

The playground is embraced by a low mound, with a nature play focus of plants, turf and timber elements providing a natural setting for imaginative play.

A gentle sloping grassy area allows for trike riding, picnicking and ball-games.

The playground purposefully responds to historic interpretive themes of orphans and their carers.

ORPHAN SCHOOL DOORMAT ENTRY



The large sandpit and associated paved area is inspired by historic notions of orphanages, dormitories and hospital wards. Sandplay is supported by ample seating and shade trees. Stylised nurses and carers symbolise the nurturing roles associated with orphans and patients. A cover will be provided for after hours.

ACTIVE PLAY AREA



Attractive equipment provides challenge for children of varying ages.

NATURE PLAY



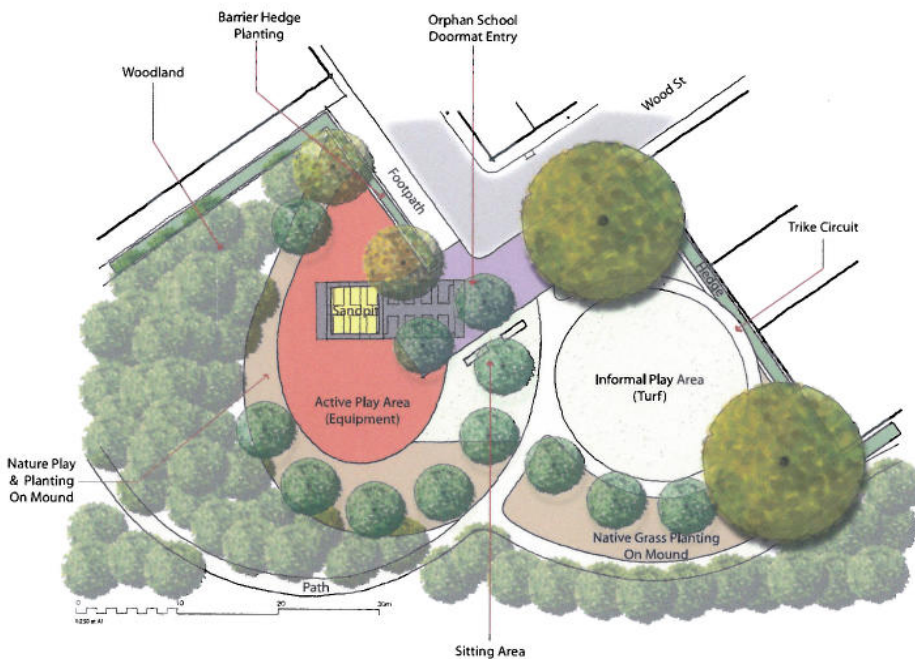
A gentle raised mound encircles the play spaces, allowing for adventurous play amongst low plants, supplemented by timber stepping stones. A large climbing tree supplements the natural setting.

INFORMAL PLAY AREA



A circular path around a grassed area provides a trike circuit for children, as well as an informal play space.

PLAYGROUND LANDSCAPE PLAN



community meeting 20th October 2007

orphan school creek playground

park plan for comment

city of villages



CITY OF SPAIN