



P.O. Box 100, Glebe 2037

## *the glebe society bulletin*

5/1979

### LYNDHURST

Lyndhurst Restoration Commences - But :  
Your Help is Needed .

The Minister for Planning and Environment, Mr Paul Landa, has on advice from the Heritage Council of N.S.W., approved the expenditure of an initial \$40,000 to carry out a holding operation prior to the restoration of Lyndhurst.

The roof has been repaired, ugly internal partitions removed and some windows replaced or restored. A caretaker's flat has been provided for security and maintenance.

The architect for the restoration, Clive Lucas, has asked the Glebe Society for help in tidying the grounds and initiating some garden.

There will be a working bee at Lyndhurst on Sunday 24 June, commencing at 11.00 am, and members are invited to say thank you for the starting of restoration work, by a couple of hours voluntary labour. Please bring a gardening implement with you, and if necessary, lunch.

For further details please contact Peter Stanbury, 660-1848.

Peter Stanbury.

### HISTORY TALKS

Don't miss the Glebe history talks ! - the last series was thoroughly enjoyed and praised. Max Solling, the history convenor, has assembled more erudite and witty experts to speak on four Wednesday nights from 27 June to 18 July. The talks will be at 7.30 pm in the new Glebe High School's library, which is centrally heated and carpeted. The talks will be :

Wed 27 June : 'Early Catholic Days in Glebe and Forest Lodge', by John Fletcher, lecturer in German at Sydney University, who compiled a history last year to commemorate the centenary of the founding of St James, Forest Lodge.

Wed 4 July : 'Inventing the Suburbs and Making a Fortune', by Barrie Dyster, lecturer in economic history at the University of NSW, and an authority on the early colonial period in Australia.

Wed 11 July : 'A Sense of Community - Life in Glebe between the Wars', by Max Solling, noted Glebe layabout and historian at large.

Wed 18 July : 'A Mixed Bag - Some Local Worthies', also by Max Solling.

The series is free and open to anyone interested. Please come along and tell your friends.

### TOWN PLAN

A small army of members and other concerned residents is now carrying out a doorknock campaign to oppose the objectionable features of the new Town Plan - but more volunteers are needed. The volunteers are taking around petitions, forms setting out the objections to the plan, and objection forms to be filled in and sent to the Council.

The details to the objections are set out in the material to be handed out. Briefly, the main objections are :

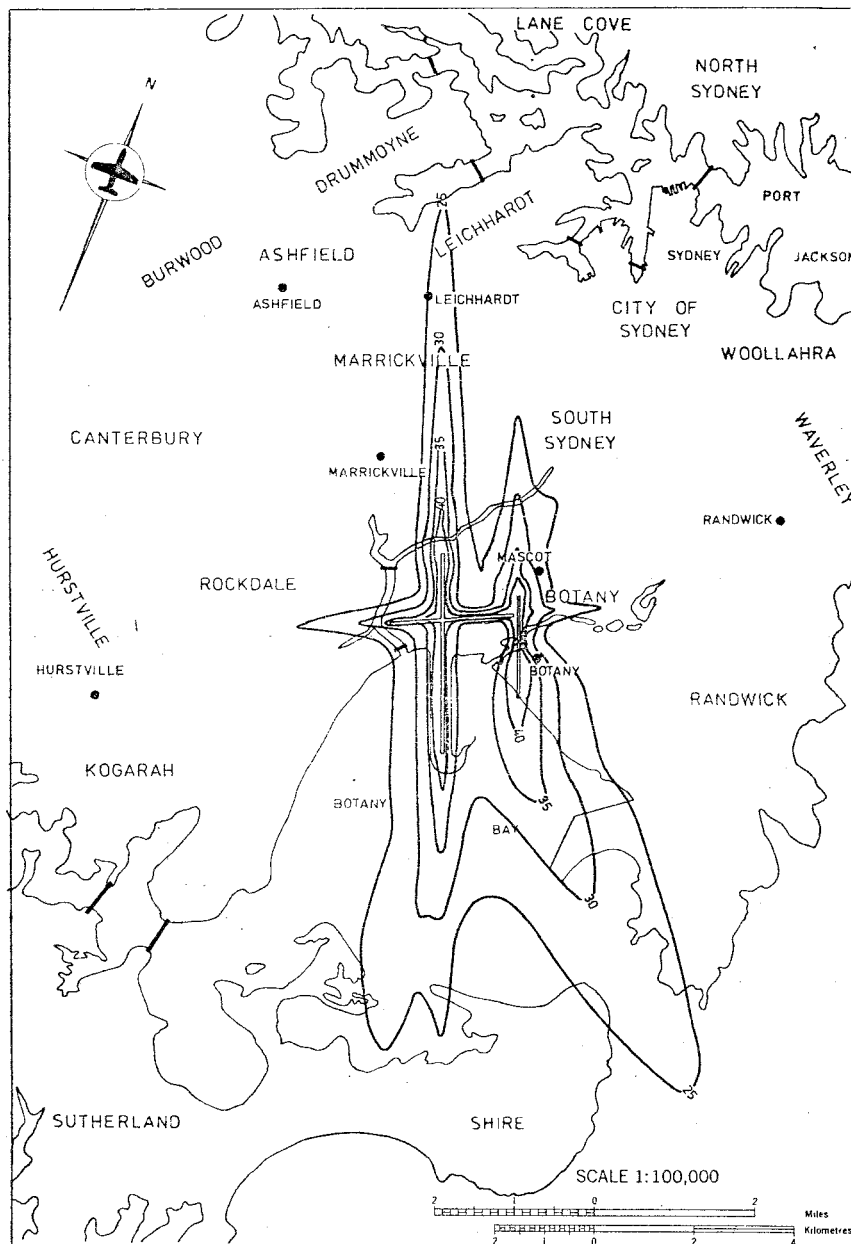
- \* the residential zoning 2 (b 4) which will encourage home unit blocks of four floors, thus destroying the character and charm of Glebe's historic streetscapes and causing loss of sunlight and privacy, and traffic problems ;
- \* the proposed road widenings ;
- \* the failure to reserve land for parks and playgrounds despite the existing critical shortage and the availability of many vacant and derelict sites ;
- \* the lack of access to the harbour foreshores;
- \* the proposed Johnston's Creek expressway which would destroy houses and a river valley that should be our best recreation area.

This is a very important time for Society members and all Glebe residents. Your contribution is important. You can :

1. Fill out the forms and sign the petitions.
2. Volunteer to help with the doorknock campaign - ring Alan Robertson on 660-6149.
3. This is an expensive campaign. If you feel able to make a contribution towards the printing and organisational costs, please ring the Treasurer, John Hoddinott, on 692-0071.

### 10th BIRTHDAY PARTY

This year the Glebe Society celebrates its tenth anniversary of foundation. How did all those years pass so quickly ? Their passing and the future will be celebrated on Saturday 21 July, with a Birthday Party at Hilary and Tony Larkum's, 17 Alexandra Rd. Tickets \$5.50, for chicken in the basket supper, beer, wine and soft drinks. Please book in advance, with Jeanette Knox 6607781, Betty Wright 6601875, John Hoddinott 6920071 or David Reeve 6602207.



## AIRPORT EXPANSION

An effective protest meeting which gained good press coverage was held at Mascot on Sunday 27 May. Another demonstration is being organised for the first weekend in July.

The accompanying map shows the predicted noise levels for 1990 if the wide-spaced eastern runway is constructed at Kingsford Smith Airport. The noise contours are graded in NEF units ( Noise Exposure Forecasts). " The limiting NEF value at '25' is frequently taken as the point at which complaints and interference with some activities are considered possible " (MANS Study).

Aircraft would land from the SE direction and take off in a NW direction on the proposed new runway. This would tend to restrict the noise levels over urban areas but nevertheless would increase the number of aircraft movements over Glebe and Forest Lodge.

Tony Larkum.

## RED SHIELD

Kevin Scott, Zone Chairman for the Glebe area for the Red Shield Appeal in 1979, needs volunteers for the first doorknock to be held in Glebe on Sunday 8 July. Workers are needed from 10am to 12 noon on that day, the operations being conducted from the St. James Parish Church in Woolley Street. All willing persons are asked to give Kevin a ring on 411-4160.

# ENVIRONMENT

## 1. The Foundry and the Chimney :

The SPCC has written to the Society's Environment Convenor and other residents who have complained about the foundry. Unfortunately the SPCC feels that the chimney is the best compromise, although recognising the visual problem. This creates a dilemma for the SPCC and the residents, who seem to agree that the chimney is no solution. There has been recent news of another possible solution - an offer by the foundry to relocate in the not too distant future. What such an offer would entail is being closely looked at.

## 2. Containers :

Noise from container repairs is currently very bad in Forsyth and Sheehy Streets. Margaret Scott, a local resident is coordinating action on the containers. People affected should ring her on 660-2217.

## Footpaths :

The Council seems to be keen on using concrete and concrete kerbstones to replace old stone kerbs with bitumen infill where they are in disrepair. As well as being expensive, the glaring white concrete is much less in character with Glebe. We urge members to be on the lookout for resurfacing, and to ring up Graham Wilson, Chief Engineer of the Leichhardt Council if you see signs of the old kerbs being replaced.

## 4. Blackwattle Bay Park :

A landscape proposal for the Park is being designed by Hilary Hewitt and Ingrid Mather . It is intended to be discussed with residents when completed, probably to come up with a community project. After comments have been invited it will be forwarded to the Council.

# AMNESTY INTERNATIONAL

In August last year members of Amnesty International living in Glebe, Balmain, Annandale and Rozelle came together to form a local group for the Inner Western Suburbs. Though it is possible to be a member of Amnesty International without belonging to a local group, the local group activity is valuable both for those involved in it and for the organisation as a whole.

Our most general aim is to publicise the work of Amnesty International for the preservation of Human Rights and for the release of political prisoners all over the world. We also co-ordinate our activities to support specific campaigns (for example, Prisoner of Conscience Week in November last year and the campaign on South Africa of March and April this year) by setting up information stalls at local markets and fairs.

As well, our group is an 'adoption' group. This means that we work directly towards the release of two 'adopted' prisoners (a Rumanian trade unionist and a unit of a prison camp in Indonesia) whose case histories have been thoroughly researched and with whom it is possible to feel a great deal of personal involvement.

We would welcome new members. If members of the Glebe Society are interested, you are invited to a film and talk on the Soweto riots in South Africa, at 8pm on 14 June at International House. A defence lawyer for South African political prisoners will be speaking. Please come along , or ring the group convenor (Frances Muecke) on 660-2765.

Frances Muecke.

## BALMAIN COAL LOADER

The Minister for Planning and Environment, Mr Landa, announced on 14 May that plans for the upgrading of the Balmain Coal Loader had been accepted by the NSW Government.

Few changes have been made to the original plans which were vigorously objected to by the Glebe Society, CLOG, the Balmain Association and many other groups and individuals. The only major change seems to be the intention now to use the chemical agglomeration method of dust control as well as water spraying. Also seen as a change for the better is the inclusion of Glebe in the list of affected areas where monitoring stations will be set up for dust and noise assessment. In the original plans Glebe was not named as an affected area, despite the fact that some 1000 Glebe residents live within 1km of the coal loader.

These are small points however. The coal loader will be allowed to continue to produce dust levels above the WHO recommended upper limit and to generate high noise levels for 24 hours every day in our area.

Tony Larkum

## FOR YOUR DIARY

### The Town Plan :

Don't forget to look at the Town Plan display at Leichhardt Town Plan on Wednesday evenings, from 6pm to 9pm. Everyone is urged to get involved in pressing for changes.

### Sunday 24 June : Lyndhurst Working Bee :

From 11 am, members are invited to respond to the \$40,000 approved for the holding operation on Lyndhurst, prior to restoration. A couple of hours voluntary labour is the best way of saying thank you. Enquiries, Peter Stanbury, 660-1848.

### Monday 25 June : Drinks at the Rowing Club :

Revised date for this social drink with members of the Committee. From 6 to 7.30pm at the Rowing Club at the end of Ferry Road.

### Wednesday 27 June : First History Talk :

'Early Catholic Days in Glebe and Forest Lodge', by John Fletcher (see article). Free - 7.30pm in the library at Glebe High School. All welcome - enquiries, Max Solling, 6601160.

### Saturday 30 June : Wine Bottling :

To be held at Tony Larkum's, 17 Alexandra Rd, from 2pm. Ring very quickly (660-7030) if you haven't ordered your wine yet. Clean bottles please.

### First weekend of July : Airport extension action :

See Tony Larkum's article on the planned extensions. Keep an eye out for the demonstration being planned.

### Wednesday 4 July : Second History Talk :

'Inventing the Suburbs and Making a Fortune', by Barrie Dyster (see article). 7.30pm in the Glebe High School library.

### Sunday 8 July : Coffee and Wine Morning :

Please note - the second Sunday of the month. All welcome for a cup of coffee or wine (50c) at Noeline and Eric Sandblom's, 140 Hereford St., 10.30 am to 12.30.

### Monday 9 July : The Monday Group :

Tentative date for the next activity. For details, please ring Pat Moore on 660-4178.

### Wednesday 11 July : Third History Talk :

'A Sense of Community - Life in Glebe between the Wars', by Max Solling (see article). Free - 7.30 pm at the Glebe High School library.

### Monday 16 July : Drinks at the Rowing Club :

Come along for a social drink with members of the Committee. From 6 pm to 7.30 pm at the Rowing Club at the end of Ferry Rd.

### Wednesday 18 July : Fourth History Talk :

'A Mixed Bag - Some Local Worthies', by Max Solling (see article). Free - at 7.30pm at the library of the new Glebe High School.

### Saturday 21 July : Tenth Birthday Party :

A special birthday party - at Hilary and Tony Larkum's, 17 Alexandra Road. Tickets : \$5.50 for supper and drinks (see article). New members are particularly invited along. Please ring Jeanette Knox, 660-7781; Betty Wright, 660-1875; John Hoddinott, 692-0071 or David Reeve, 660-2207 ; to book.

### Sunday 28 October : House and Garden Inspection :

Alan Robertson is completing arrangements for this year's inspection. Please ring him on 660-6149 if you would like to volunteer your house or could help out on the day.

## HELP

### Situations Vacant :

1. More volunteers needed for the doorknock campaign of objections to the Leichhardt Planning Scheme - ring Alan Robertson, 660-6149.
2. Volunteers for the Lyndhurst working bee on Sunday 24 June - see article, or ring Peter Stanbury on 660-1848.
3. We repeat our appeal for a room or garage as temporary storage space for the Society's archives, preferably one with outside access. Please ring Eric Sandblom on 660-6593.

## NEW MEMBERS

### Welcome to :

Andrew WOOD  
Peter MARTIN  
Moses AARON  
Darryl STEVENSON  
Ray SEPANAHO  
Peter ASHTON  
Jill TAYLOR  
Zig and Juliet RICHTERS  
Susan KELLAR  
Jocelyn GARDINER  
Christine GRIEVES  
Brian and Gwen HAZELDEN  
Diana SHARPE  
Peter STONE  
John FAULKNER  
Mark WATSON  
Margery CLARK

## SUBSCRIPTIONS

June subscription forms will be enclosed with this Bulletin for about half the Society's members. Please don't forget to pay promptly to save me writing out another one of two reminder forms. The strength of the Society in our representations to government and civic bodies is based partly on the number of paid-up members, so the more up-to-date the list is, the more we can attempt to 'promote' the general well-being of the residents and ensure the Glebe remains a pleasant place to live'.

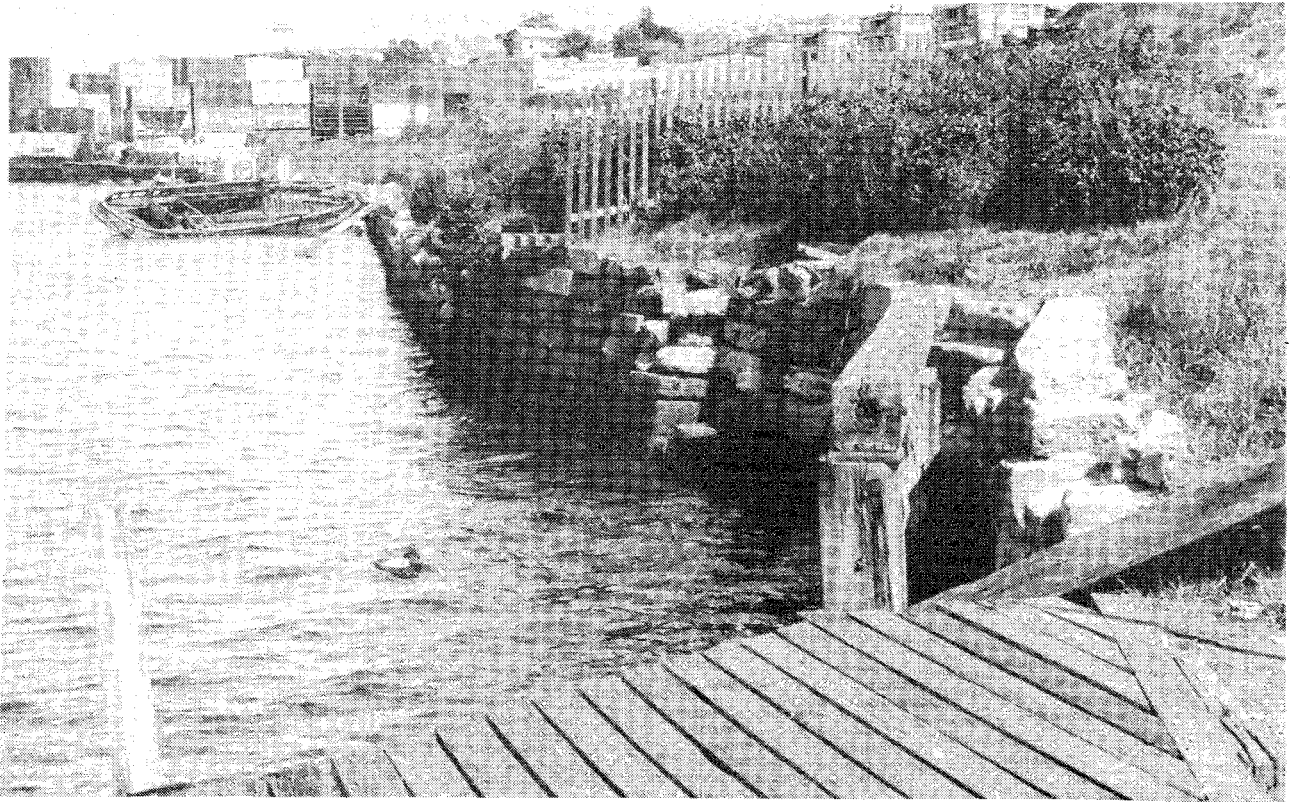
The accepted definition of Household Membership is two or more adults in the one house. Members are invited to modify their membership on the form as appropriate and to return the appropriate remittance either by post or hand, as detailed on the form.

John Hoddinott (Treasurer).

○ SPECIAL ISSUE:  
THE SOCIETY'S WATERFRONT PROPOSAL

THE GLEBE SOCIETY

# WATERFRONT PARKS FOR GLEBE



## GLEBE NEEDS WATERFRONT PARKS

Glebe, with a population of 14,000, has only 45% of the open space regarded as the minimum standard for urban residents.

Sydney's heritage includes a magnificent and unique open space in the form of Sydney Harbour. Yet of the 21.7 km of harbour foreshores between Sydney Harbour Bridge and Iron Cove Bridge, only 1.1 km is accessible to the public. Of this, Glebe has less than 80 metres.

Ten years ago Glebe had an active waterfront with industries requiring access to the Harbour living in harmony with residents and providing employment. Today, almost all these industries have gone and the land lies derelict or has been alienated for non-waterfront use.

Opportunity now exists to provide residents with adequate public waterfront access -

at no cash cost to the State Government and at minor cost to Leichhardt Municipal Council

with negligible impact on available port facilities, and with no loss of employment in the area.

The realisation of this proposal will create new waterfront parks in Glebe and allow the development of a largely waterfront walk from Johnston's Canal on Rozelle Bay to Wentworth Park on Blackwattle Bay.

The achievement of these goals requires action from -

The Maritime Services Board

Planning and Environment Commission, and

Leichhardt Municipal Council

# THE DETAILS

Glebe Point

## THE PROPOSAL IN DETAIL

A proposal has been sent to the two Ministers and the Mayor seeking a series of waterfront parks linked by walkways (on the waterfront where possible) stretching from Johnston's Canal to Pyrmont Bridge Road (Wentworth Park). The land required is to be acquired, transferred or rezoned in order to provide adequate public access in Glebe is shown on the plan:

### ROZELLE BAY - FEDERAL ROAD

- A. Steetley Industries site, and
- B. Former Police Boys' Club site

These sites should be rezoned for public open space and converted to parkland for passive recreational uses. The sites are ideally located on Rozelle Bay, beside Johnston's Canal which adjoins parkland proposals in Annandale and, with the closure of Federal Road, allow Jubilee Park to be extended to the waterfront.

- C. National Plywood site
- D. Sydney Sawmilling site
- E. Standen Bros./ Smith Bros. site

These sites should be rezoned public open space with a reservation that they may remain in their present usage until the existing businesses cease. Upon the cessation of existing use, the land should be converted to public parkland.

### GLEBE POINT - JOHNSTON'S BAY

- F. Glebe Point Road adjoining Pope Paul VI Park (Marine Reserve)
- G. Reserve R89043 for Public Recreation

Leichhardt Council should close the road between the Park and the Reserve and develop the road and the reserve (now commercially leased) as parkland.

- H. Former Hardy's timber yard site

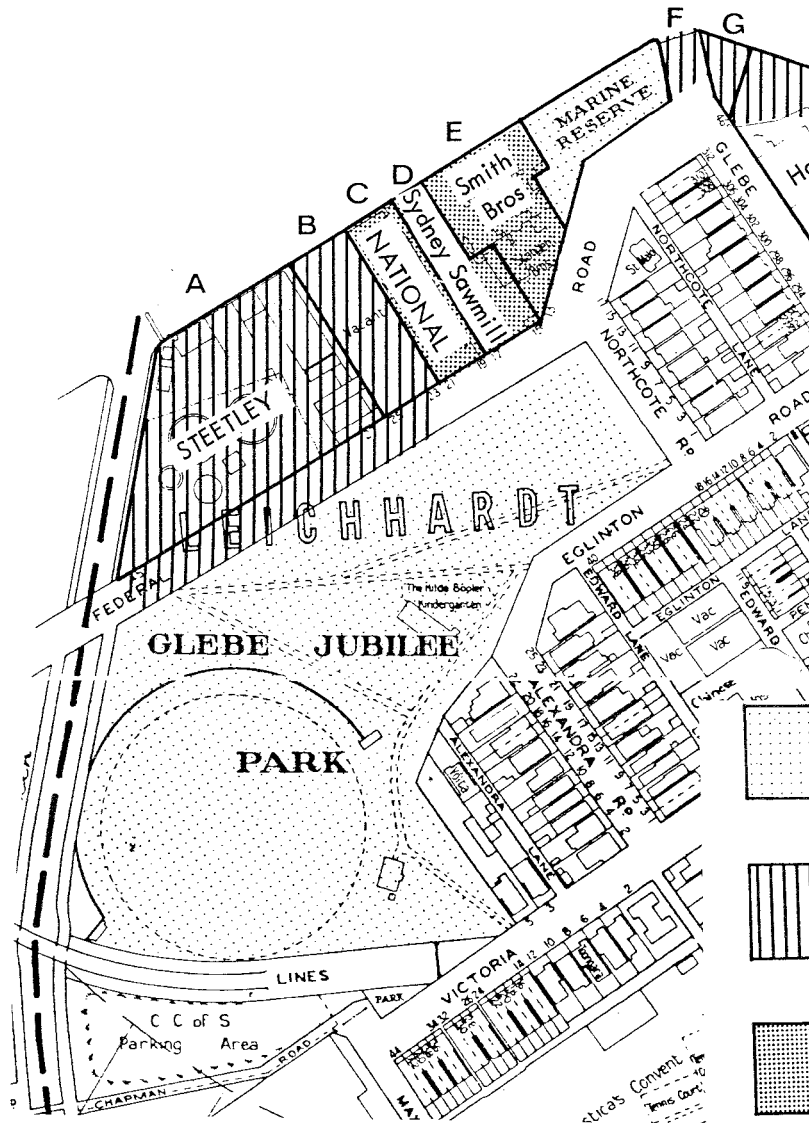
Negotiations are currently underway with a view to the site being rezoned from waterfront industrial to a mixture of waterfront public parkland and residential under conditions that would result in a visually pleasing development compatible with the character of Glebe and in an adequate waterfront public park.

- I. Strata Plan No. 12929 "The Anchorage"

Leichhardt Council should acquire all or part of the flat waterfront land at the foot of the cliff for public open space.

- J. MSB land part Vol. 2050 Fol. 103

This land - for which, because of its location, no waterfront industrial use is possible should be transferred at no cost to Leichhardt Council for Public parkland.



- K. Waterfront land at rear of Nos. 4 and 6 Mary Street

The narrow waterfront strip along the line of the existing unmade pathway should be transferred by the M.S.B. to Leichhardt Council for waterfront access.

- L. Public Lane and Waterfront reserve

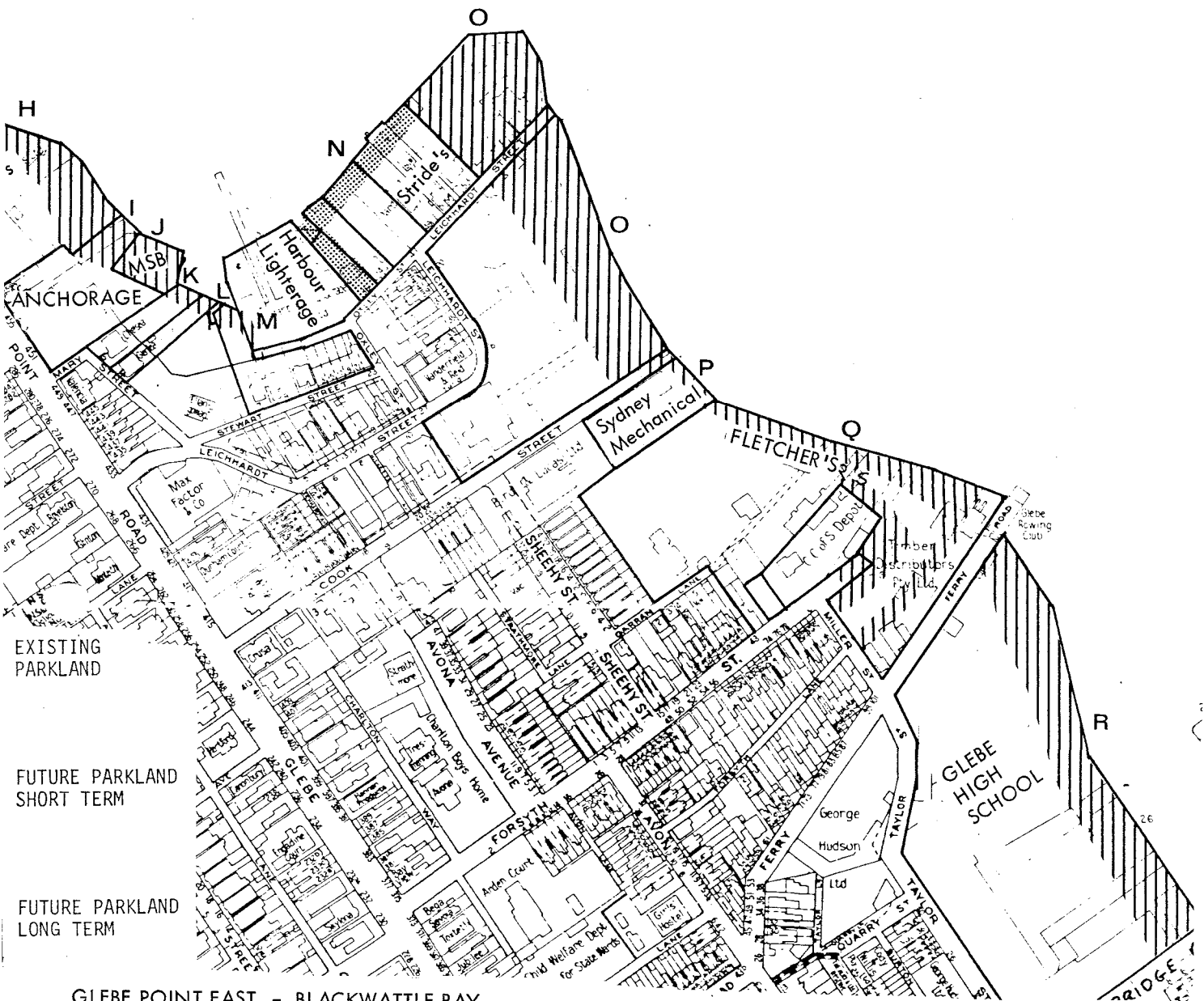
These areas are already under the control of Leichhardt Council and require only minimal landscaping and access.

- M. Harbour Lighterage Pty. Limited

A narrow pedestrian right of way from the waterfront to Oxley Street should be negotiated by Leichhardt Council to provide a link between the proposed parkland areas.

- N. Nos. 14 & 16 Oxley Street  
Nos. 47 to 53 Leichhardt Street

It is proposed that the whole of No. 16 Oxley St. and a waterfront strip on the other properties be rezoned as possible future waterfront open space in order to reserve these areas for public parkland in any future redevelopments.



**GLEBE POINT EAST - BLACKWATTLE BAY**

**O. Proposed Blackwattle Bay Park**

The compromise proposals recently agreed to for the re-arrangement of the areas of parkland and home unit construction are supported, subject to the early extension of Sheehy Street to Leichhardt Street to overcome the already serious traffic congestion.

**P. Sydney Mechanical Services Pty. Ltd. - 29 Cook St.**

**Q. John Fletcher (Customs Agents) Pty. Ltd. - Cook Street**

As neither of these sites use, nor are likely in the future to use the waterfront facilities available to them, it is proposed that a waterfront strip 10 metres wide be obtained for waterfront parkland and to provide a link between Blackwattle Bay Park (Cook Street) and Glebe High School (Ferry Road). It is also proposed that the former Timber Distributors site bounded by Miller and Forsyth Streets, Blackwattle Bay and Ferry Road, and the extensions of Forsyth Street and the Council Depot, be developed as open space with the exception of Fletcher's access road.

**R. Glebe High School**

The current proposals provide for a wide waterfront strip of the school site, between Ferry Road and Bridge Road, to be landscaped for passive recreation uses. The opportunity exists in the future for the use of this land and adjoining playing fields for non-structured community recreation outside school hours.

**CONCLUSIONS**

These proposals for waterfront parkland and access in Glebe are realistic and readily capable of achievement given commitment by the public authorities involved and wide public support.

This proposal demonstrates that significant high quality parkland can be created at very little cost and with negligible impact on available port facilities and local employment opportunities. The following actions are required to implement them.

# ACTION

## M.S.B

### ACTION PLAN FOR THE MARITIME SERVICES BOARD

1. Immediately transfer to Leichhardt Council for open space requirements the areas of land marked on the map as - A, B (when current lease expires), and J, and K.
2. Transfer to Leichhardt Council when existing industrial use ceases or other land use changes occur, the areas of land marked on the map as - C, D, E, and N.
3. Agree to road closures and rezoning as required under the proposal.

## P.E.C.

### ACTION PLAN FOR PLANNING AND ENVIRONMENT COMMISSION

1. Amend the forthcoming 1979 Leichhardt Town Plan to provide the waterfront parks and walkways required by this proposal.
2. Consistently enforce the foreshore scenic protection provisions of the forthcoming 1979 draft plan.
3. Speed up the acquisition of the proposed Blackwattle Bay Park.

## COUNCIL

### ACTION PLAN FOR LEICHHARDT MUNICIPAL COUNCIL

1. Commission, in consultation with residents, an overall landscape development plan of the proposed waterfront parklands and implement progressively as land becomes available.
2. Develop plans for and implement special landscaping treatment for the streets linking the proposed parkland elements.
3. Acquire by transfer or purchase the waterfront sites marked on the map as follows! - A, B, H, I, J, K, O, P, and Q.
4. Close and landscape the roads opposite the parkland acquisitions as marked on the map.
5. Extend Sheehy Street through to Leichhardt Street to improve access for residents and park users.
6. Negotiate right-of-way through the property of Harbour Lighterage Pty. Limited.

## AND YOU

### ACTION PLAN FOR RESIDENTS

These proposals and action plans won't just happen. Bureaucratic inertia and vested interests will ensure that nothing happens unless there is wide public support. YOUR action is needed to make YOUR waterfront parks a reality.

1. Write to the following people to let them know you support the proposals :

Hon. Jack Ferguson, M.L.A.  
Minister for Public Works and Ports

Hon. Paul Landa, M.L.C.  
Minister for Planning and Environment

Hon. Pat Hills, M.L.A.  
Member for Phillip

All at Parliament House, Sydney, 2000.

Alderman Les Rodwell, Mayor  
Alderman Ivor Cawley, Glebe Ward  
Alderman I. Millard, Glebe Ward

All at Council Chambers, Leichhardt.

2. Encourage friends, neighbours and organisations you belong to write in support of the proposals.
3. Take special interest in the parkland proposal nearest you and work to see it becomes a reality.

## HOW TO JOIN

### THE GLEBE SOCIETY

The full proposal and this summary were prepared by The Glebe Society, with assistance from the 4-Shores Committee as a community service.

Join the Society and thereby contribute to the preservation and improvement of our historical and architectural heritage and local environment generally.

Send subscriptions, together with name and address to:  
P.O. BOX 100, GLEBE, 2037.  
Households \$3 - Singles \$2

Copies of the full submission available at \$3 each.

Authorised by Alan Robertson, 148 Hereford Street, Forest Lodge.