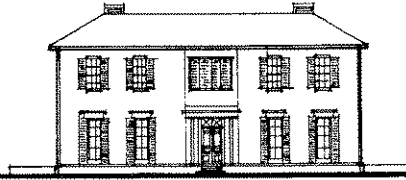


G. and J. Kuoro
26 Victoria Rd.



THE GLEBE SOCIETY BULLETIN

Box 100, Glebe 2037

2/1982

MELOY'S SITE

WHAT THE MANAGEMENT COMMITTEE DID

Blackwattle Bay Park

Bob Armstrong reported that some work has been done on the Park: turf has been laid, and planting and bordering begun. In addition, Venetia has been fenced off and work has begun on establishing the ground levels around it. The committee of local residents which took part in negotiations with Council and Parkes Development over the landscaping plan, will meet again to discuss how well the plans have been carried out.

Pollution

Committee members reported that, while the monitoring of pollution levels was far beyond the resources of the Society, such monitoring is carried out at Pymont and Rozelle by the State Pollution Authority. However, it seems that although pollution levels are rising, the likelihood of any action is very small. We have been informed that fabric filters have been fitted at Pymont Power Station and are being fitted at White Bay, but more exact details will be sought through Council and from the Minister.

Homeopathic Hospital

The Homeopathic Hospital has been approached about making their large vacant block of land on the corner of Wigram Road and Glebe Point Road open for public use. The response, however, has been negative, and Bill Nelson will take the matter up with Council's Trees and Open Spaces Committee on behalf of the Society.

Meloy's Site

Betty Borg, a resident involved with local opposition to Meloy's proposal to build town houses on the site of their present trucking business in Lombard Street, explained the case to Committee members. The Committee agreed to oppose the present plans with Council on various grounds, but particularly in the grounds of over-high density and lack of open space.

The Glebe Action Group emerged during the last year as a response to the problems generated by Meloy's trucking operation, 42 Lombard St, Glebe. These include their use of narrow streets and lanes by articulated double container trucks, which have knocked telegraph poles over, start regularly often at 5.30am waking residents and creating a generally unpleasant effect on residents and the environment.

About a year ago, a petition was presented to Council with about 55 signatures, representing residents in the immediate area of the yard, asking that Meloy's operation be curbed and the land rezoned open space, which is what it was until the 1979 Leichhardt Planning Scheme. The Council agreed to support us but have done virtually nothing in actual fact, apart from Hall Greenland who has supported us right from the start.

Consequently as our support has grown we have tried to keep the pressure on Council to live up to their reputation of being an open, left-wing council.

At a public meeting with Council, Meloy's and residents at Glebe Town Hall, 29th October 1981, Meloy's admitted that they had outgrown the area and would have to leave, but took no substantial interim measures to relieve the problems such as off-street parking for employees or starting no earlier than 7am. Consequently, they presented to Council a plan for 81 two and three bedroom units, plus shops and professional suites on the site which occupies 9 hectares. The Glebe Action Group was unanimously opposed to this proposal and collected over 800 signatures of Glebe residents supporting our opposition.

Council has arranged a public meeting on Monday 22 March to hear residents' opinions on the proposed redevelopment and measures to ameliorate the traffic and noise problems caused by Meloy's. The Glebe Action Group will be pushing for a creative redevelopment of the site, with the emphasis on community needs and open space.

Kevin and Ros Butcher
660 5529



COUNCIL'S TREES AND OPEN SPACES COMMITTEE

Bill Nelson frequently represents the Society and Glebe residents generally on the Council's Trees and Open Spaces Committee, and has supplied the following information.

Recent developments

Following the Society's recommendation, the Committee had accepted as a top priority for the Glebe Ward, the acquisition of the vacant triangle of land between Catherine and Mt Vernon Streets, and its landscaping as a park. Unfortunately, Council has had to report that because this land is part of the Glebe Estate, purchase of the land cannot proceed until the transfer of the Estate from the Commonwealth to the State Government has been completed. Council is unhopeful of quick success. Therefore, the Committee has recommended as the next most urgent area for action, the purchase of the derelict building on the corner of Reuss St and Jarocin Avenue. The search for titles has begun and Council is optimistic about obtaining the site.

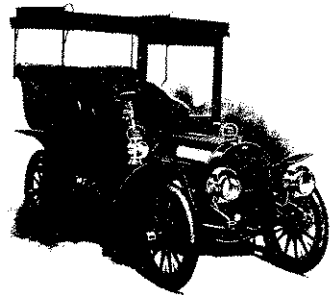
Council has reported to the Committee that it intends to develop a Local Environment Plan (LEP) on Open Space, which will bring together parks and open space proposals by local wards. Residents are invited to put forward any proposal. The Glebe Society has, of course, submitted a plan to Council with detailed proposals for parkland for the Glebe Ward (reported in Bulletins 9 and 10, 1981), but we need to constantly remind Council of the contents of that plan.

An appeal for more participants

The Trees and Open Space Committee meets on the third Thursday of each month, at 8pm in Council Chambers, Leichhardt Town Hall. Residents may attend at any time, and attendance is welcomed by Council.

Bill points out that the presence of local residents is very important to put the case for the needs of our ward. The greatest impact on Council thinking is certainly made by the areas of the Municipality which have most residents attending Committee meetings.

The Society's written submission offers excellent overall plans for open space for the ward, and means that most of the hard work has been done, but unless Glebe is represented in person, the submission may not receive the attention it deserves.



ROAD HIERARCHY PLAN

Members have probably noticed from advertisements in The Glebe that Council is preparing a Road Hierarchy Plan, to be submitted to the Traffic Authority by June. It involves classification of roads in the Municipality from consideration of traffic volume and type of vehicles. The Plan is largely descriptive of the present situation and the consequences of having the plan adopted are unclear at present. It should be noted that the Plan is only short-term.

The only streets in Glebe to be involved in the Plan are: Wigram Road and St Johns Road (limited sub-arterial), Glebe Point Road from Bridge Road to Parramatta Road (sub-arterial) and Bridge Road and The Crescent (Arterial). The concept of limited (no-growth) sub-arterials has yet to be accepted by the Traffic Authority, although Council is hopeful that it will be accepted. The Road Hierarchy Plan is not concerned with any other traffic issues (it is not concerned for example, with road closures).

Gideon Rutherford has been attending resident meetings concerned with the plan, and any Glebe Society members interested to make submissions for the proposed plan are invited to meet with him at 50 Toxteth Road on Sunday 18th April at 2pm. Phone 692 0239

HISTORY

The Leichhardt Historical Journal, an occasional publication edited by three local historians, contains articles which deserve a wider audience. The following article will no doubt be of interest to Glebe residents, especially those who have connections with Forest Lodge Public School. It has been supplied by the author, Max Solling, and first appeared in Leichhardt Historical Journal No 9, 1980. (It appears here in a slightly amended form.)

WILLIAM BARDSLEY (1856 - 1929):
The 'Boss' of Forest Lodge
Public School

About 1836 Ambrose Foss moved from Hereford House to a new villa some 300 yards immediately west of his former residence. Early colonists noted that this part of Glebe was covered by "a thick eucalyptus wood, alternating with low scrub land, where wild duck were plentiful" and appropriately Ambrose and Louisa Foss called their new home "Forest Lodge". As one of the locality's "splendid edifices" designed for the well-to-do, "Forest Lodge" became something of a landmark and among the prominent citizens of colonial Sydney that lived there were David Jones, Alexander Campbell, George Bennett and William Munro.

The colonial villa was demolished about 1910 to make way for more intensive development, (its approximate site being about 210 Bridge Road), but the name lives on.

The Forest Lodge estate was owned by four propertied gentlemen R Want, T Holt, T Smart and G. W. Allen when it was subdivided and auctioned off in small plots between 1865 and 1871. The original municipal borough of Glebe, created in 1859, consisted of three wards: Bishopthorpe, Outer and Inner wards. The number of people living in the neighbourhood bounded by Parramatta Road to the south, Orphan School Creek to the west, Pyrmont Bridge Road to the north and Westmoreland Street and Purves Lane to the east, had swelled to 1,158 at the 1871 census when a fourth ward, Forest Lodge, was created. This neighbourhood could now return three local elected representatives to the Council. The residential precinct loosely described as Forest Lodge embraces a wider area than the old municipal ward taking in Ross Street, Wooley Street, much of Hereford Street and the area around Upper Road and Albert Street.

In 1880 the State at last accepted responsibility for placing an elementary schooling of reasonable guaranteed quality within reach of every child, with attendance compulsory for those between the ages of 7 and 14.

After a long wait the citizens of Forest Lodge rejoiced when a public school on the corner of Ross Street and Bridge Road was opened on 1 July 1883, catering for 150 boys and girls and 150 infants. In 1881 when Forest Lodge achieved "Superior School" status, there were two public and twelve private schools, as well as a ragged school in Glebe.

The first headmaster of Forest Lodge was William Bardsley, a man who had taught at St John's Darlinghurst and St James Anglican school Sydney in the mid seventies. He was the head teacher, for a time, at the Hebrew school in Castlereagh Street and had been in charge of schools at Wagga, Mudgee and Warren. Born on 16 December 1856, Bill Bardsley met and married Rachael Readford during his stay at Warren. It was there, on 7 December 1882, that their first child was born. They called him Warren, after the small town. The Bardsleys were to have five more children: Vera, Forest, Doris, Sylvia and Raymond (known as "Mick").

In the eighties there were many signs of a more general sophistication creeping into the economic and social apparatus of Glebe: the appearance of schools and churches, the spawning of a miscellaneous collection of service and consumer trades along the main suburban arteries, the emergence of innumerable sporting clubs, the establishment of debating and choral societies, building and friendly societies, volunteer corps and fire brigade, a library, masonic lodge and so forth. It was also the heyday of ambitious municipal schemes, manifested by that symbol of civic wealth and pride, Glebe Town Hall, completed in 1880 at a cost of £5,000, embodying every flamboyance that appealed to the taste of the Victorian age.

The early residents of Forest Lodge were a parochial lot, a little proud that John Seamer, one of their aldermen and Mayor in 1878, had carried the day in having the Town Hall built within their neighbourhood when its original site was near the corner of Glebe and Bridge Roads. Forest Lodge was a centre of nonconformism with the Congregational and Primitive Methodist chapels packed on Sunday and the Primitives claiming the conversion of "hundreds of souls". A Forest Lodge corps of the Salvation Army was established in 1885 but their street corner meetings were frequently interrupted by the Glebe push and on occasions they were forced to retreat to their Citadel in the city. Two local cricket clubs, Standard and Waratah, provided a variety of social activities and a harbour moonlight excursion with the speediest men in town, the Forest Lodge Harriers, was an outing not to be missed.

This article will be continued in the next edition of the Bulletin.



PICNIC AWASH

After an exciting ferry-ride from Glebe Rowing Club to Clifton Gardens, a dramatic downpour washed out the Society's picnic on March 21st. This drenching was extremely popular with the children, who leapt at the chance of rolling in puddles, hiding under groundsheets and invading the ladies toilets.

The adults too, sustained by their packed Eskys, rallied splendidly in scenes reminiscent of "Tenko" until rescued early by the gallant ferry crew, who, with the enthusiastic assistance of the soggy but unquenched children, piloted us home. By an extraordinary coincidence our ferry added a Glebe voice to the Harbour Bridge celebrations, those on the water being as thoroughly soaked as those walking above.

Neil Macindoe

Management Committee

President	Maureen Colman	660-2302
Senior Vice Pres.	Bob Armstrong	660-4189
Junior Vice Pres.	Doris Sharpe	660-6636
Secretary	John Buckingham	660-7780
Treasurer	Gideon Rutherford	692-0239
Committee	Bill Nelson	660-0038
	Neville Holmes	692-0247
	Betty Wright	660-1875
New members' rep.	Diana Sharpe	660-4392
Bulletin editor	Michael Hough	660-7232
Bulletin distribution	Jan Macindoe	660-0208
	Doris Sharpe	660-6636

For your diary

Sunday, 4th April, 11am-1pm

Coffee morning at the home of Rita Ramsden 171 Arundel St. Forest Lodge. Drop in and meet other members. New members always welcome.

Sunday, 4th April, 9am

The first "Dairy Farmers Rotary Run", 10 kilometres starting and finishing at Wentworth Park. A Fun Run for all ages; proceeds to assorted community causes.

Monday, 19th April

Monday Group to meet. Details still uncertain. Ring Vi Hicks for information as soon as possible. 660-3694

Saturday, 24th April, 2pm

Local history walk, led by ever-popular local historian, Max Solling. Wear comfortable walking shoes, and meet outside St Scholastica's College, corner Avenue and Arcadia Roads. Afternoon tea will be available. New members especially welcome. Details are available from Jeanette Knox, 660-7781, but no booking is required.

HELP WANTED

We still need someone to take over from Nan Waterford as organiser of our monthly Coffee Mornings. There is not a great amount of work involved. It requires only a few phonecalls to arrange venues, and transporting the cups. It is an excellent opportunity to meet other members. Ring Nan if you think you could help. 660-6906