

THE GLEBE SOCIETY BULLETIN

Box 100, Glebe 2037

NO 8 OF 1992

OCTOBER

"Registered by Australia Post - Publication No. NBG 7483"

INSPECTION OF HISTORIC GLEBE SATURDAY 18 OCTOBER 1992

COME ONE, COME ALL!

For just \$10 per person (\$5 concession) you will view a varied selection of the significant buildings, homes and gardens in Glebe.

Your ticket includes a self guided tour of the 12 buildings and homes which will be open for your inspection. Refreshments will be available at Hereford House.

So come and enjoy a relaxed day from 10am onwards.

THESE PROPERTIES ARE OPEN FOR INSPECTION:

HEREFORD HOUSE - 53 Hereford St
KERRIBREE - 55 Hereford St
ST JAMES CHURCH - Woolley St
GLEBE TOWN HALL - St Johns Rd
15 CATHERINE ST
DEMETER BAKERY - 65 Derwent St
ST JOHN'S CHURCH - Cnr St Johns
and Glebe Point Rds
DIGGERS' MEMORIAL - Glebe Pt Rd
MONTANA - 36 Boyce St
AROHA - 25 Toxteth Rd
TOXTETH HOUSE - 2 Avenue Rd
(St Scholastica's)
ST SCHOLASTICA'S CHAPEL - 2 Avenue Road
SZE YUP TEMPLE - Edward St
BORO - 443 Glebe Point Rd
216 GLEBE POINT ROAD



RESTORATION OF GLEBE DIGGERS' MEMORIAL

All members of the Society are invited to attend the

LAUNCHING OF THE APPEAL for the RESTORATION OF THE GLEBE DIGGERS' MEMORIAL

at the Memorial, Foley Park, Glebe Point Road
at 2.30pm on Saturday 17 October 1992 by

HIS WORSHIP THE MAYOR OF LEICHHARDT ALDERMAN LARRY HAND

Please ring Dr Bill Nelson if you are staying for
afternoon tea in the Vicarage gardens.
(\$5 per person to cover costs.)

PRESIDENT'S REPORT 1992

The Glebe Society has a most unusual structure, but one which has served it well for the past 23 years or so. You have just been asked to elect a management committee consisting of a President, a senior Vice-President, a junior Vice-President, a Treasurer, a Secretary and five other members. The immediate past President is also a member ex officio.

But the committee also has the power to appoint specialist sub-committees, and the convenors of those sub-committees automatically become members of the committee itself. A case of the tail wagging the dog, you might say; but it has never posed a problem to the Society, and has indeed been one of its major strengths, since the sub-committee structure reflects the issues which are of particular and contemporary relevance in our community.

You have already seen and discussed the reports of the various sub-committees for the current year. Before I add my general comments, it may be as well to review briefly why we are here and why we do what we do.

The main objects of the Society are as follows:

- To promote the well-being and interests of the citizens of the Glebe area and of the members of the Society.
- To preserve and enhance the natural and architectural character of the area, and to encourage sound town planning and architectural practices.
- To stimulate interest in the history and character of the area.
- To oppose by all lawful means any development or other proposal which is detrimental or likely to be detrimental to the area or to the interests of residents of the area.

I would like to make a few general comments on the Society's activities, in the context of these principal objects.

My first comment is that it isn't always to get it right as far as everyone is concerned. When the Glebe Society was first established, it was easy to campaign vigorously against the demolition of Victorian housing stock to make way for hideous three-storey walkups, or, even worse, high rise such as Johanna O'Dea. It was easy to stand in front of bulldozers at Fig Street to stop radial freeways from completely destroying a quarter of Glebe, and ruining the amenity of what was left.

But what of Harold Park? What of the marina proposal in Rozelle Bay? What of the Hockey Club's proposal to construct an artificial turf playing field in Federal Park? What of the proposal to redevelop University Hotel as "affordable accommodation" units? All of these are issues upon which it is possible to have differing, if not opposing, views, and where a number of often competing threads have to be woven into the finished cloth. They are also essentially political matters, and when it is all boiled down, politics is the art of the possible.

The second point I would make is that we should not be defensive about the fact that our primary concern is about the environment - both the natural environment and the built environment. If those things are maintained and enhanced, they provide a context in which social, cultural and other activities can thrive - as they surely do in Glebe. But that is not to say that the Glebe Society is not concerned with people. Our major donation for the year was to the Glebe community bus. Ever since the Society was formed, it has always placed a great emphasis on social and cultural matters. Over the years, there have been play-reading groups, crocheting groups, gardening groups, and so on. Currently, our regular social activities are the Monday Group, the regular dining out nights and the Monday evening gatherings at the Ancient Briton. To a great extent, it is these activities which have guaranteed the continued existence of the Society, and that have made it the essentially happy group that it is today.

My third point is, I think, the most important of all. I think we are in danger of becoming complacent, and I also think we are in danger of being considered irrelevant, particularly in the southern end of Glebe. We are NOT the Glebe Point Society, although a lot of our activities over the last few years have been concentrated on the bays and foreshores, and geography dictates that they occur only to the north and east of Glebe.

I think we need to concentrate on selling the Society much more vigorously, on developing programs and activities that will be seen as relevant and appropriate in the whole of Glebe, and finally on expanding our membership, particularly in the St Phillips estate and Forest Lodge.

My final point is in relation to aesthetics. Bernard Smith used to say that it was impertinent to impose one's aesthetic views on one's neighbours, no matter what one may think of their use of colour or surface treatments. However, he did draw the line at wholesale structural desecration. His view was that if the essential architectural characteristics of individual buildings and streetscapes was preserved, and if appropriate guidance were offered, then aesthetics would eventually look after themselves.

The Glebe Society has, with the Glebe Chamber of Commerce and Leichhardt Municipal Council, participated for the last two years in the Glebe Point Road project. The major achievement of this project has been the commissioning of a report by Liz Vines, which catalogues every single building (or group of buildings) in Glebe Point Road, says something about their history and significance, and recommends (but only recommends) what should be done to restore or enhance them. The other major achievement of the project is that the Vines report has been adopted by Leichhardt Municipal Council as a planning instrument, so that there are at last consistent guidelines for proposed redevelopments in Glebe Point Road.

Finally, it is my pleasant task to say thank you to all of those people, both within and outside the Society, who have contributed so much to the Society over the past year.

- To the management committee and to the tireless convenors of the various sub-committees.
- To Leichhardt Council. We may not always agree with the Council's decisions, but they are at least willing to listen to what we have to say and to deal with residents in an appropriate and civilised way.
- To the Rev Hugh Scott and Max Solling, not only for their sterling work on the Diggers Memorial, but also (in Hugh's case) for the support the Society has received from St John's Church, and (in Max's case) for fielding all the historical and genealogical enquiries which come to the Society.
- To the unsung heroes. To Sally Nelson and the other members of the Monday Group, to John Stander, Ian Edwards and of course Jeanette Knox

for all their good works on the social side of the Society's activities.

- To Margaret Sheppard, Anton Crouch, Bobbie Burke and Peter Strickland, who have represented the Society on various outside bodies.
- To Glebe Rowing Club, not only for making the club house available to us today, but also for their support throughout the year. Indeed, it is largely their presence in Blackwattle and Rozelle Bays which has contributed to our bays and foreshores policy.
- To Dr David MacIntosh, for his support of the Society and for encouraging music and music making in Glebe.
- To Andrew Wood and the other members of the house inspection committee. If the house inspection on 18 October is not an outstanding success, it certainly won't be their fault!
- Finally, to Peter Strickland (again) and to John Hoddinott, both of whom have given so much time and effort to the Society's activities over the years. Business commitments are making it necessary for Peter to take a lower profile in the Society's affairs, and unfortunately ill health means that John feels unable to continue with his light rail activities. Both of them will be very hard acts to follow.

In conclusion, a very happy birthday to the Society, and many happy returns!

Ted McKeown

PLANNING REPORT 1992

Ensuring that new development in Glebe is sympathetic to the character of the area remains a priority of the Society. The major project this year was a proposed development of the Sugar's site in Glebe Point Road by FAI Insurances. This went to the Land and Environment Court after the plans by the developer had been rejected by Council. Both the Glebe Society and local residents had objected to what was proposed on grounds of design, compatibility and impacts on residents. The Court ruled in favour of FAI and a display board showing their proposal is now on the site. There remains some doubt that they will actually start building for some time.

We continue to get examples of total insensitivity to the character of Glebe, such as a roller door installed

in Ferry Road. By itself an apparently minor matter but the cumulative effect on our suburb justifies the attention given to such details.

In the past, the Society's Planning sub-committee has had to deal with a difficult Leichhardt Council. Having a former sub-committee convenor on Council and other aldermen sympathetic to heritage, design and planning matters, has been a great help this year.

Council's initiatives in the formation of special Council committees on Planning and Heritage provide a forum for the Society and others to impact on general policies. The proposed precincts, three of which are proposed for Glebe will also give a venue for local involvement in the planning process.

Peter Strickland

LIGHT RAIL.

The Glebe Society initiated a proposal for utilisation of existing railway goods lines to provide a light rail service through Glebe to the city in a monograph written by John Gerofi in 1981. Since then, progress towards implementation of such a scheme has been slow but recent interest in the concept has brought it back onto the agenda.

The City West proposed development of Pyrmont and Ultimo includes a light rail service between the city and the fish markets.

The state government is seeking funding assistance through the "Better Cities" programme to enable this service to be available in the next few years. Other schemes are proposed for the eastern suburbs, north western suburbs and elsewhere. Continuation of a service on the goods line through Glebe is not yet on the Government's priority list. We need to lobby to change that view as the marginal cost of extending the service is relatively low and it would provide an immediate user population that does not yet exist in Pyrmont, so making the whole service more economically feasible. Also, a service through Glebe could be used as a first demonstration project before other lines are built and operated.

John Hoddinott & Peter Strickland.

John Hoddinott has held the fort on light rail for the Society for more than a decade. His efforts and persistence have kept light rail as one of our top priority objectives. Poor health has restricted John's capacity to continue convening the light rail sub-committee at this time and we need volunteers to continue his outstanding efforts.

We thank John for his work for the Society and await the day when he, along with other Glebe residents, can enjoy the fulfilment of a dream, a regular light rail service through Glebe to the city.

Ted McKeown.

KSA & GLEBE.

Legal Challenge to Sacrifice of Botany Bay. CAEA Inc. commenced a legal challenge in the NSW Land & Environment Court on 8/9/92 over the controversial decision of the Maritime Services Board to hand over control of a large part of Botany Bay to the FAC. "The extraordinary concessions to the Federal Airports Corporation made by the MSB have been deceitful as well as commercially inept". (Geoff Grace, CAEA Inc.). The recently-acquired 1990 MSB documents show that **the third runway will cease to be a runway in 2010 and will then become a port.** This was never disclosed in the so-called "comprehensive" EIS. "Many will detect a hidden agenda on the part of the FAC and the MSB when it is realised that by converting the third runway to a port facility for the MSB, the Federal Government will have avoided conducting a rigorous environmental impact study which would have been required before a major construction such as a new port facility was begun.... The State Government will pay between \$345 million and \$1.13 billion for the third runway according to state cabinet documents obtained during the litigation. This means the 3rd runway will cost NSW taxpayers far more than it will cost the Commonwealth, even though it is a Commonwealth project..."(Newsletter, CAEA Inc.)

CAEA Inc is actively involved in fund-raising to cover its legal costs.

Take-offs to the North from the Third Runway.

As you would expect this issue re-emerged, this time in the Airport Noise Management Plan working papers, August (SMH 1.10.92) This must be the real agenda, yet the Environmental Impact Statement, page 10.1 says no take-offs to the north was stipulated by the Commonwealth Government to reduce the noise effects.

Dr. John Goldberg, at the ANZAAS conference in September, claimed the Federal Minister for the Environment Mrs Kelly, and her department had preferred to accept evidence "lacking in integrity" in the EIS. He calculated that about 65 schools and preschools would not be recommended for noise-insulation treatment because the EIS deliberately discredited evidence relating to aircraft noise and schools.

Common user terminal plans were recently shelved at KSA (SMH 3/9/92).

The Minister for Aviation, Senator Cook, recently wrote safety problems with simultaneous operations of aircraft at KSA could be narrowed down to five incidents, of which two had any serious risk of collision (SMH 14.9.92)The following day "Air safety body admit crisis" - the Civil Aviation Authority's poor management, short sighted quick-fix problem-solving, power plays and lack of commercial and industrial understanding was disclosed in an official document (SMH). The Minister's assurances have been undermined!

**AIRPORT CURFEW
AIRCRAFT NOISE
COMPLAINTS
ALL HOURS
TEL. 667 9050**

ENVIRONMENT

Environment issues have mainly centred on issues dealt with by council's Tree and Open Space Committee which has replaced the Tree Planting and Preservation Committee. This new committee continues to be well supported by residents from Leichhardt and Annandale.

In relation to trees, the committee exists to assist council in the establishment, nurturing and preservation of trees in the Municipality commensurate with the provisions of the Environmental Planning and Assessment Act, council's Tree Preservation Order, council's policies and available council resources.

In relation to open space, it exists to establish principles and guidelines for the conservation, development and management of all public space within the municipality. Detailed objectives and operational guidelines have been tabled at committee meetings.

A rough summary of issues over the year include:

- Council completed the upgrading for Minogue Reserve which has included some of the suggestions from the Glebe Point Road Project group. However, since completion *every* single one of the trees has been vandalised and is now broken, along with most of the tree guards. It's now like a park of the broken trees. If you have any ideas on rescuing the situation, they're needed ...
- Also as a result of the Glebe Point Road Project submission to council (including a draft design by architects, Tonkin Zulaikha) and Alderman Macindoe's support, a noticeboard is planned for the post office corner.
- As noted recently, the Glebe Society has submitted comments on council's survey of open space in the municipality which is a comprehensive survey of existing resources and community needs and attitudes as well as opportunities and constraints (physical, financial and legal). This is to include a review of council's open space policies and strategies, including preparing a Contributions Plan by 17 December 1992 so council can continue to levy for open space contributions under s. 94 of the Environmental Planning and Assessment Act. This review is to be developed through the committee.
- Council has created a significant tree sub-committee to assess nominated trees on a 6 monthly basis as part of the Tree and Open Space Committee and the register is proving a valuable resource. This register exists not

only to extend protection under council's Tree Preservation Order but also to constitute a historical record within justifiable heritage criteria. While anyone can nominate a tree for listing, the owner of a property where the tree is growing needs to be advised and given an opportunity to provide reasons against listing the tree. Significant tree nomination forms are available from council.

- There have been no submissions in response to the talk by John Douglass to members of the Glebe Point Road Project and John says he now anticipates providing a report late October. He is currently researching methods of introducing root barriers and has also pointed out the options that may be available with bundling of power lines. Apparently wires in King Street, Newtown have been bundled and placed along facades by SCC free of charge.
- As reported in the bulletin, there was a very successful tree planting day in Lombard Street, organised by Bobbie Burke and well supported by council. Members of the Tree and Open Space Committee also lent a hand along with residents.



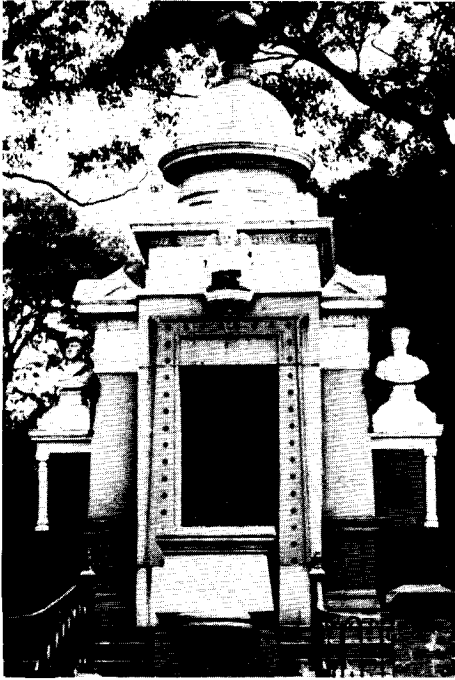
THE MONDAY GROUP

The Monday Group is departing from its usual routine to help celebrate the launch of the Diggers' Memorial Appeal on Saturday 17 October at 2.30 pm. at Foley Park, Glebe Point Road.

The Launch will be followed by afternoon tea in the Vicarage gardens.

Please note this up-date: the recommended telephone number for curfew-breaking flights and aircraft noise complaints, 24 hrs, 667 9050.

RESTORATION OF GLEBE DIGGERS' MEMORIAL



BETWEEN 1914 and 1918, 792 Glebe residents volunteered for service in the Great War. About one quarter of these (174) did not return and were buried where they died—at Gallipoli, in the Middle East and in France.

Public mourning was expressed by the erection of a particularly fine memorial in the shape of a granite and marble mausoleum. The bust of a Digger stood on one side and one of a Sailor on the other. The memorial was unveiled by the Governor-General on Anzac Day 1922.

Sadly, this outstanding memorial which adjoins Foley Park, in Glebe Point Road and which is an important part of the community's heritage, is now damaged by exposure and vandalism—the two busts have completely disappeared and the Angel is defaced.

The Glebe Diggers' Memorial Committee aims to raise \$20,000 to assist in the restoration and has opened an Appeal, which is supported by the National Trust and the NSW Heritage Assistance Program. The latter will give support on a dollar for dollar basis to a limit of \$13,800 provided the project is completed by 31st August 1993.

Therefore, we earnestly request your help.

Please fill in the coupon below and send your donation to the Hon. Treasurer. A receipt will be forwarded to you.

Donations over \$2.00 are tax deductible.

TO: NATIONAL TRUST OF AUSTRALIA (NSW)
GLEBE DIGGERS' MEMORIAL
RESTORATION APPEAL

Date

I wish to donate

\$5

\$10

\$20

Other

Please find my cheque/money order enclosed

for \$.....

Cheques should be made payable to Glebe Diggers' Memorial Restoration Appeal.

Name

Signature

Address

.....
Send to The Hon. Treasurer, 1 Allen Street, GLEBE, NSW, 2037.

FOR YOUR DIARY

Wednesday 14 October - 6.30pm - Dining Out - Thai Silk, 28 Glebe Point Road (BYO)

Saturday 17 October - 2.30pm - Diggers' Memorial Appeal Launch - Foley Park. (See page 1)

Sunday 18 October - HOUSE INSPECTION (See page 1)

Monday 19 October - NO MONDAY GROUP MEETING - (See page 5)

Saturday 14 November - 7.30 for 8pm - Musical Soiree, Margaretta Cottage, 6 Leichhardt Street. Donations welcome.

Sunday 15 November - 4pm - Choral and Instrumental Music, St Scholastica's, 2 Avenue Road. Admission free.

HAVE YOU VOLUNTEERED YET TO BE A HOUSE MINDER ON 18 OCTOBER?
(Minders get a free ticket.)



THE GLEBE SOCIETY inc.

MANAGEMENT COMMITTEE

PRESIDENT: Ted McKeown 660 3917 (H)
391 3000 (W)

SENIOR VICE PRESIDENT: Marianne von Knobelsdorff 692 0916 (H)

JUNIOR VICE PRESIDENT:

IMM. PAST PRES: Andrew Wood 660 2194 (H)

SECRETARY: Jeanette Knox 660 7781 (H)

TREASURER: Edwina Doe 660 7066 (H)
922 3877 (W)

COMMITTEE:

Mavis McCarthy 660 5119 (H)
Jenny Pockley 660 6363 (H)
Peter Strickland 660 7624 (H)
Christine Whittemore 660 7969 (H)

Bulletin Editor: Jeremy Long 692 8742
Membership List: Edwina Doe 660 7066
New Members' Contact: Jenny Pockley 660 6363
Publications: Patricia Jackson 660 8849
Monday Group: Sally Nelson 660 6138

MEMBERSHIP OF THE GLEBE SOCIETY COSTS:

Ordinary \$22, Additional household members \$5 each, Student/Pensioner \$8, Institutional \$28.

Write to P.O. Box 100, Glebe 2037 or ring Jenny Pockley on 660 6363 for information.

GLEBE POINT ROAD PROJECT REPRESENTATIVES

Peter Strickland - 660 7624 (H)
Ted McKeown - 660 3917 (H)
Anton Crouch - 660 2889 (H)

CONVENORS OF SUB-COMMITTEES

All convenors are ex-officio members of the Management Committee

BAYS & FORESHORES

John Buckingham - 660 7780

DIGGERS MEMORIAL

Bill Nelson - 660 6138 (H)

ENVIRONMENT

Fiona Campbell - 891 8284 (W)

HAROLD PARK

Gideon Rutherford - 692 0239

KINGSFORD SMITH AIRPORT & GLEBE

Alison McKeown - 660 3917

LIGHT RAIL

PLANNING

TRAFFIC

Jeanette Knox - 660 7781

WENTWORTH PARK

Christine Stewart - 660 8324

ARCHIVIST

Lyn Milton - 660 7930 (H)