

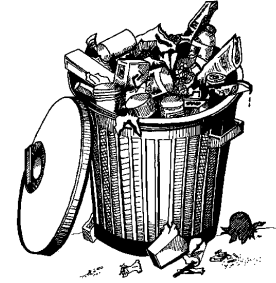
Glebe

Society Bulletin

3/2001 April/May

Is Glebe Clean?

We would be very interested to hear opinions from readers on rubbish in Glebe. Please write to The Glebe Society, PO Box 100, Glebe 2037, or email to <horstschwarz@hotmail.com> and let us know if you think your street is appropriately cleaned, and what you think about the issues addressed in this article. This will enable us to get a more complete picture of what is happening in the community, and we may be able to develop strategies to improve the situation.



If there is a sufficient number of responses, we will try to organise a public meeting with Council representatives to discuss issues of street cleaning and waste collection. In the meantime, please use the "Street Clean" fax-back sheet (included with the last *Bulletin*) to inform Council about problems that require urgent action.

Many people will have noticed the increased presence of street sweeping machines on Glebe's streets. It seems that Council has realised that residents are discontented with the condition of their streets and want a better cleaning service. Whether the increased effort was caused by the recent discussion about the possible expansion of the City boundaries or by other events, it certainly is a move in the right direction and Council should be congratulated. I think first results are already visible, especially on Glebe Point Road. However, I still see much room for improvement.

Recently, I met Mick Koeford, the Parks and Streetscapes Co-ordinator of Leichhardt Council, who explained to me Council's current street cleaning policy. According to that policy, each street in Glebe is to be cleaned (i.e. swept by street sweeping machines, gutters cleaned, mowing and whipping if necessary) 2-3 times per month.

The street sweeping machines should always be accompanied by Council personnel on foot equipped with Stihl Blowers and/or brooms to get the litter out of spaces that are hard to access. The back lanes of the Glebe Estate (between Park Lane and Mt. Vernon Lane), which attract a lot of litter, are swept three times a week (Monday, Wednesday and Friday). Glebe Point Road, with its high traffic of shoppers and tourists, is cleaned daily.

This is a reasonable schedule, yet many streets and lanes south east of Glebe Point are still full of litter and dog faeces. This is not only unsightly, but also unhygienic, and works against all efforts of Council to keep the storm water drains clean and avoid pollution of the harbour. On the first meeting of the new CLEAN UP GLEBE Project Team, we identified four main problems – I will outline them briefly to initiate a wider discussion among members of the Society.

continued p2...

INQUIRY INTO THE STRUCTURE OF LOCAL GOVERNMENT IN EIGHT COUNCIL AREAS IN THE INNER CITY AND EASTERN SUBURBS OF SYDNEY.

Up until this issue of the *Bulletin* went to the printer (early on 23 April) there had been no mention in the media of Commissioner Sproats' Report of the Inquiry into Inner City Councils, which initially was due on 31 March; the Government granted an extension of time and the report was to be presented to the Governor on 20 April.

An email to the Commissioner's office brought the following response: "The Commissioner's report is being finalised today, but public release is at the discretion of the government."

... continued from p1

1) Council workers do not always follow the above schedule

There still are streets that are *not* cleaned 2-3 times per month, and Council personnel do not always accompany sweeping machines with blowers and brooms. This is highly ineffective because litter underneath parked cars and in corners cannot be reached by the big machines and accumulates in the streets. However, even if sweepers on foot are present, litter the size of PET bottles and aluminium cans can be found immediately after they leave. This suggests that the cleaning is not thorough, perhaps due to lack of time. Sometimes there also seems to be a problem of co-ordination: sweepers pile up the litter hours (days) before the truck arrives to collect it.

2) Recycling collection

The collectors employed by the subcontractor tend to throw items that they don't deem recyclable on the road and never clean up if accidents occur. Sometimes streets are covered with glass splinters and paper on collection day. To some degree this may also be caused by the open crates most households use for recycling collection. Other councils (Burwood, Strathfield; Marrickville will follow in June) have abandoned the open crate system and introduced bins with a lid, because "much of the recycling ended up in the naturestrip, in gutters or blown up the street" (V. Judge, Mayor of Strathfield Council in the *Courier* 2 April 2001).

3) Irresponsible behaviour of some residents and visitors

Unfortunately, some residents put rubbish that doesn't fit in their wheelie bin into plastic bags, and dump these in their back lane. This encourages others to add their own rubbish, including car engines, ironing boards and other large items (see the reports of previous 'CLEAN UP AUSTRALIA' activities. *Bulletin* 2/2000/ and 2/2001). Leichhardt Council seems to be reluctant to collect these 'illegal' rubbish piles, although it has been shown that people are less likely to litter in clean streets.

Sometimes littering is caused by poor dissemination of information because new tenants are not informed of Council's waste collection policy. They may put their rubbish into the wrong container and so Council does not collect it.

It used to be widely accepted that owners clean up after their pets. Judging from the amount of dog droppings on our streets, many now are determined to leave the mess for further distribution.

4) Slow reaction to complaints of residents

Phone calls to Council's Customer Service concerning the removal of dumped litter or abandoned cars too often have no effect. This frustrates those residents who help keep our suburb clean. If no direct action of Council is possible, there should be at least some feedback to the resident explaining the circumstances. Phone calls to the direct numbers listed in the *Bulletin* or on the 'Street Clean' sheet are said to be more successful, but not all residents have access to these numbers, and clearly the Council's Customer Service should deal with complaints concerning litter and abandoned cars.

The above points are necessarily based on the personal experiences of the members of the project team, and we look forward to hearing of the experience of other readers..

Horst Schwarz
Clean Up Glebe Project Team

Traffic Matters



PARKING STRATEGY

Poles, signs and meters for the resident parking scheme are starting to appear all over Glebe to a mixed reception. It appears that the notice about the arrival of the poles and meters has taken some residents by surprise. Residents from about six streets in the north of Glebe have successfully petitioned Council to have the implementation deferred [e.g. see p6]. The society has expressed its disappointment with the level of consultation that was carried out and we are also disappointed that there is no representative from the Glebe area on Council's parking implementation committee. The additional physical infrastructure certainly adds to the footpath clutter which is increasingly becoming an issue.

FRANCIS STREET

We remain concerned about the provision for two-way traffic in Francis Street. This has possibly made a small contribution to improving the operation of the Broadway Centre's parking, and there has also possibly been a small improvement at the Mountain Street/Broadway intersection. However, we remain unconvinced that these improvements are sufficient to warrant continuing the aggravation to that end of Glebe Point Road. We are currently waiting Sandra Nori's response regarding the RTA's undertaking to report on the assessment of the trial period.

FRANKLYN STREET

Council has completed the installation of the chicane at Franklyn Street but there still is evidence that the emergency access provision is being used as a through route. We will need to monitor the further developments to see if additional measures are needed to stop this abuse.

TOLL TUNNEL

Your society also has some reservations about the intention to build a toll tunnel under the CBD. While this tunnel will no doubt improve the surface environment in the CBD, there is a risk of additional traffic on Pymont Bridge Road. The effect of the tunnel will also be to concentrate exhaust emissions at the exhaust stacks. At present this is planned for the western end of the tunnel. We are seeking RTA's advice about the risk of additional traffic and also about the risk of exhaust pollution.

Steve Stewart – Traffic Convenor

Vale Glebe Point Road

On March 30 I received a letter from Leichhardt Council thanking The Society for the “time and effort” put into the Glebe Point Road Project “over a number of years” and pointing out that the technical expertise of “Matthew Taylor had succeeded in setting up the framework for a unique streetscape which truly reflects the diverse nature of Glebe”.

It occurred to me that some Society members may not have had the opportunity to meet Matthew Taylor, and potentially the *Bulletin* was the best way to keep them informed.

On 25 April, 2000, Helen Clark, Prime Minister of New Zealand, and her Australian counterpart, dedicated a new Anzac Commemorative Site at Gallipoli in Turkey. In their communiqué the leaders announced:

“This joint development is the first project undertaken within the newly created Gallipoli Peninsula Peace Park.

An initiative of President

Demirel of Turkey, the Peace Park is dedicated to peace in its widest sense – not just the cessation of hostilities but the active pursuit of harmony, understanding, tolerance and freedom. It is an ideal that the Australian and New Zealand peoples share with Turkey and with all other democratic nations.”

The Anzac Commemorative Site was designed by D.M.Taylor, Landscape Architects, of which Matthew Taylor is the principal.

Two years before, on July 4, 1998, the Prime Minister of Australia dedicated the

Australian Corps Memorial Park at Le Hamel, in the Somme Valley in northern France.

On that day eighty years before, in 1918, the new commander of the Australian Army Corps, General

John Monash, “the only general of creative originality produced by WWI”, orchestrated the victory of his troops using tactics that would greatly hasten the end of this most bloody war. Monash, who served throughout the Gallipoli campaign and gained a reputation for excellent leadership, was noted for his thorough preparation, effective coordination, and the need to conserve life. His objective was “to advance under the maximum possible protection of the maximum possible array of mechanical resources”. For the first time, tanks advanced with the infantry instead of ahead of them, an innovation adopted successfully by the British Army.



The Australian Corps Memorial Park at Le Hamel in France

The Memorial at Le Hamel, like the site of the Dawn Service at Gallipoli, was designed by Matthew Taylor.

Two years prior to this, in May, 1996, Matthew Taylor’s firm was selected to provide technical assistance to the Glebe Point Road Project. After a number of public consultations, D.M.Taylor produced a report (adopted by Leichhardt Council in September 1996, see illustration p6) which provided a blueprint for rejuvenating Glebe Point Road until the Committee was abolished on 24 October, 2000. For four years Matthew or his associate attended every meeting of the Project, making frequent presentations. In addition he gave freely of his time and advice to members of the Committee and Council officers.

As a reward for his commitment and his passion for Glebe, he was dumped without warning when the Mayoral Minute abolished the Committee.

It would have been nice to be able to say to visitors: “the improvements to Glebe Point Road were designed by the firm who is responsible for Australia’s most important overseas commemorative sites at Gallipoli and in France”, but sadly this is no longer possible. For this, as well as the general lack of progress, Glebe residents can blame Leichhardt councillors and their supporters.

According to the letter from Council, a number of works were budgeted for and will still be undertaken.

... continued p6



Malt Shovel Brewery Tour & Tasting

Friday 11 May 2001 from 6pm - 8pm

The Glebe Society has arranged for an exclusive tour for members and friends of the Malt Shovel Brewery in Camperdown with Dr Chuck Hahn as our host for the evening. You will have the opportunity to taste of a selection of fine beers and Chuck will explain the brewing process and the adaptability of beer to complement a variety of dishes. Light finger food will be served to accompany the beer.

THE ORIGINS OF BEER

There is a school of thinking among historians and anthropologists, which believes that brewing is at the very commencement of civilisation. Beer is known to have been produced at our earliest times. Meat, fish and other naturally occurring foods were in plentiful supply. However, the early brewers needed reliable grain supplies and this could be a reason for early agriculture. So, while waiting for the grain to harvest they established settlements that grew into our ancient cities.

The Egyptians held brewing in great esteem, to the point where Rameses III had his own brewery. He certainly needed one as he sacrificed 30,000 gallons of his brew to the Gods each year. The Egyptians fed the workers on the pyramids with a diet of bread, onions and beer.

The delights of beer were recorded on a clay tablet in Mesopotamia about 3000 BC: "I feel delightful drinking beer, in a blissful mood with joy in the heart and a happy liver".

BREWING IN THE 'NEW COLONY'

Our early brewing industry in the white settlement of Australia was established by mainly English and Irish brewers. They set the scene for what was to happen in Australian brewing. Then, as now in England and Ireland, they preferred traditional ales brewed using top fermentation methods. Currently only a small percentage of Australians enjoy the traditional ales. Because of our warmer weather, lager has generally become our preferred beer.

In the true spirit of free enterprise it was a private brewer, convicted highway robber and publican James Squire, who became Australia's first brewer, arriving as a convict and dying one of the colony's wealthiest men. Squire

produced the first commercial ale in the new colony, at Kissing Point on the banks of the Parramatta River, west of Sydney. The actual date is unknown, but it was almost certainly some time late in 1794, at his tavern The Malting Shovel, near Ryde, west of Sydney by the riverside.

Governor King commissioned a building on Squire's land to be constructed and this became the first brewery. Squire filled a deeply felt need in the colony, and his beer was compared favourably with the best ales of Burton-on-Trent, England's home of brewing.

The Camperdown Brewery was built as the Hahn Brewery in early 1988, in an early 1900s vintage warehouse. In late 1998 it was renamed the Malt Shovel Brewery after the original brewery tavern of James Squire.

" In the true spirit of free enterprise it was a private brewer, convicted highway robber and publican James Squire, who became Australia's first brewer, arriving as a convict and dying one of the colony's wealthiest men. "

The Malt Shovel Brewery produces boutique beers in small batches, using only the finest ingredients. In honour of Australia's first brewer the brewery have named their range of natural ales 'James Squire'. They are distinctive, interesting brews with the rich flavours, colours and textures of traditional brewing – Original Amber Ale, Pilsener and Porter.

Dedicated to more than just brewing, Dr Chuck Hahn, is Brewmaster Malt Shovel Brewery, and he encourages people to drink beer with their meals. The brewery plays a major part in educating drinkers about the many varieties and individual subtleties of beer.

BOOKINGS ARE ESSENTIAL –

see booking form enclosed with this *Bulletin*.

NOTE: You will not be able to buy beer during the tour but advice will be given regarding local suppliers.

The above information was provided by the Malt Shovel Brewery.

What's Happening at Blackwattle Bay?

Work has been progressing slowly at Blackwattle Bay wharf area between the coal unloader and Pioneer Concrete over the last few months. There has been a Masterplan developed for the area and the Society was actively involved in participating in public meetings and providing submissions on the draft plan. There have been some delays with work on the site due to some dispute and it is now due for completion in June this year.

According to the project manager for the Department of Public Works and Services, Peter Whiteoak, the works are being carried out in accordance with the Masterplan. His department has been contracted by Waterways to rebuild and extend the wharf area.

The jetty currently used by Pioneer will remain and there will be a 130m X 10m wharf extension which will link to this jetty. The area between the coal unloader and the fish markets does not form part of the current work. The chain wire fencing will be replaced with similar fencing as part of the contract – hopefully this option can be improved with future developments so that there is a clear view of the water, a more stylish option which provides a secure site. The area between Pioneer and the school is not included in the schedule of works currently being undertaken.

The wharf infrastructure works includes extending, rebuilding and resurfacing the wharf area only. No buildings are being constructed

as part of this first phase. Public Works dismantled the coal unloader but they do not have a contract to reinstall it, although I am advised that this is still the intention of Waterways. The timber structure is not considered to be structurally sound so significant works would be required for this to occur.

Waterways will shortly call for 'Expressions of Interest' from organisations to invest capital to develop and operate the site in accordance with the Master Plan. The same will be happening for Rozelle Bay. It is expected that these will be available in May this year. The contact at Waterways is Ivan Patrick 9364. 2389.

Pioneer were successful in obtaining an extension on their lease for an additional two years – ie the operation continues until 2003 rather than finishing this year. It also means that the *Claudia* will continue to be moored at the site, with the associated risks of damage of the adjoining structures due to the size of this vessel. My understanding is that the expressions of interest for Blackwattle Bay will include this site as well, and we can only hope that the area will be revitalised to have a maritime operation which is more in keeping with a prime inner city waterfront location. We need a 'White Knight' to provide a fitting gateway to Glebe!

At Rozelle Bay the Millennium berths in front of the Waterways buildings will remain. Bob Carr has confirmed that the 'temporary wharves' in front of the restaurant Liquidity (which were constructed for the Olympics) will actually be removed – so they really were temporary!

Judy Vergison
Foreshore Walk and Cycle Way



ANNUAL DINNER AND FUND-RAISING AUCTION

Another reminder that we will be holding an auction at the Society's Annual Fund-raising Dinner to be held later this year (probably early September).

Some of the services already offered for auction by members include:

- a walking tour of the inner city
- a day's outing on Sydney Harbour,
- a band to play at your private function
- two hours' fly-fishing instruction
- overnight stay for two at an elegant Glebe B and B
- one psychotherapy assessment and treatment
- ideas on landscaping from professional architect
- old family photographs made like new

If you can donate a service, please call:

Andrew Craig on 9566. 1746

Further details of the dinner will be in a later issue.

... continued from p3

These include replacement of fifteen more trees and installation of ten new seats and four new noticeboards. Unfortunately, there is no longer a Committee to oversee this work. Council estimates that Glebe Point Road still needs more than \$ 1.8 million worth of works to be completed, but no money has been allocated.



Graphic from cover sheet of the Report on Glebe Point Road Streetscape Management Plan, prepared for Leichhardt Council in September 1996 by D M Taylor Landscape Architects

By the time you read this Council will have begun to install hundreds of German-made parking meters (thus contradicting its much trumpeted 'buy Australian' policy, but that's another story. Parking meters seem to have become local government's version of poker machines.) Accumulated parking contributions from businesses will partially fund the meters, but these funds are insufficient and will have to be supplemented with further borrowings. If and when the machines become profitable, Councillors are on record as saying the income will be used for infrastructure. Note that no Council resolution to this effect has been passed. Furthermore, under the Glebe Point Road Project Committee the infrastructure works were chosen in consultation with residents, listed in priority order, and costed, budgeted and supervised by residents. With the loss of that Committee, Council has rejected not only the expertise of Matthew Taylor and The Glebe Society, but has also given up on participatory democracy.

Neil Macindoe

FIGURES TAKEN FROM LEICHHARDT MUNICIPALITY POPULATION PROFILE - 1996 CENSUS

The following table correlates Glebe households with number of motor vehicles

No. of vehicles/Glebe	HOUSEHOLDS IN CENSUS YEAR		
	1986	1991	1996
None	2026	2198	2137
One	2118	2385	2390
Two	642	678	760
Three or more	127	161	162
Not stated	389	306	535
TOTAL HOUSEHOLDS	5302	5728	5984
% zero vehicles	38.2	38.4	35.7
Average (mean)	0.75	0.78	0.78

Glebe had a lower average number of vehicles per household than Leichhardt LGA (1.02 in 1996). The average number of vehicles per persons remained static over the past two census periods in Glebe, and was well below that for Leichhardt and Australia as a whole. Glebe was the only suburb in the Leichhardt LGA which did not experienced an increase in vehicle ownership.

RESIDENTS RESIST PARKING METERS

Glebe resident Eva Cox has let us have some details of her request for a moratorium on the installation of parking meters in Lombard Street where she lives. She wrote to Council:

"As a long term resident of Lombard Street, and a driver, I am aware of the vagaries of local parking, and have no day time problems in finding parking for self, friends, students and others who may visit my house. Night time is sometimes tight at weekends, but isn't a serious inconvenience. ...

"If it's not broken, we need to recognise that 'fixing' may itself cause problems. By including this small precinct with the rest of Glebe Point Road, the plan may well create present problems by assuming a future problem. ...

"Therefore I am proposing that the plans for this area be put on hold. I have a particular and personal interest in Lombard Street being excluded but think it would be logical to include the whole precinct until there is evidence of problems actually occurring. Within six months we will know whether there are deleterious changes to traffic and parking in the area, and can then decide appropriately without running the risk of spending money unnecessarily, bureaucratic intransigence, contractor objections, and angry residents and rate-payers."

She received a response to the effect that her proposal was raised at the meeting of the Parking Management Implementation Working Group, where it was decided to put meter installation in Lombard Street on hold.

[The Society has a copy of technical information and map regarding the parking meters to be installed; if any member would like to see these documents, please contact the Secretary. Ed.]

THREE BRIDGES WALK UPDATE

We are finalising the arrangements to mark the route of the THREE BRIDGES WALK using a stencil of the walk logo. Council is providing advice on suitable paints to use on footpaths.

We will be arranging a breakfast at Blackwattle Park in June to launch the WALK brochure and to invite community involvement in using the stencil to mark the route at key points along the way. See details in the next *Bulletin*.

CUSTOMER SERVICE

Leichhardt Council's brochure introducing their Customer Service Centre invites residents to use the Centre to:

- Ask a question
- Request a service
- Apply for an approval
- Make a payment
- Contact Sydney Credit Union
- Get information
- Provide feedback
- Report a problem
- Book a facility

Just phone 9367. 9222, or email <leichhardt@lmc.nsw.gov.au>

NEW LITTER LAWS

New litter laws came into force on 1 April 2001. The new laws are a part of the NSW Government Litter Prevention Programme. Fines and penalties range from \$200-\$770 for individuals, and \$400-\$3,300 for corporations.

These laws make it illegal to put advertising material under vehicle windscreen wipers, on property gates or fences, in a public place, in open private places and in other inappropriate areas where it may become litter.

The new laws reflect community concern about litter, including its potential to pollute local waterways through the stormwater systems.

The litter laws are mainly enforced by local councils, and more information can be obtained from the NSW EPA's Pollution Line on 131. 555, or from <www.epa.nsw.gov.au/litter

Notes from the Management Committee meeting held 11 April



ADVERTISING IN OUR BULLETIN

The Management Committee would like to thank those members who provided feedback on the issue of whether we should accept paid advertising in the Society's *Bulletin*.

Most members who responded viewed advertising as an acceptable way to add to our limited revenue stream, provided adequate guidelines were in place.

The Management Committee is formulating such guidelines with a view to accepting paid advertising from 1 July 2001.

GLEBE SOCIETY ARCHIVES

Our archivist Lyn Milton reports that the Society archives are currently languishing in unsuitable conditions in the basement of Glebe Town Hall.

Our immediate task is to find temporary accommodation for the records so they are dry and secure. Next we must seek a permanent home in which they can be maintained in adequate conditions.

President Bruce Davis will be contacting the Mayor with a view to discussing the situation.

GLEBE SOCIETY WEBSITE

Cynthia Jones, Bruce Davis and Chris Korgemets have been working hard on developing the website. Management Committee members are currently reviewing the 'draft' site and providing feedback.

ELECTRICITY SUBSTATION - ROSS STREET

The Society has written to Energy Australia regarding these premises which are covered in graffiti and a harbour for dumped rubbish.

INQUIRY REPORT

The Society understands that the report of the Inquiry into Eight Inner City Councils is due to be handed to the Minister on 20th April. It is not known at this stage when the document will be released publicly.

GLEBE YOUTH SERVICE

Glebe Youth Service has been given a grant to upgrade its façade at 84 Glebe Point Road. It has workshopped ideas with young people and those ideas have been further developed by consultants. GYS is currently undertaking a series of consultations on the final proposals with various community groups.

The ideas are innovative and interesting: the proposals are on display at the other GYS site (51 Glebe Point Road), if you want to drop in and have a look.

GRAFFITI

As part of an ongoing program seeking to understand approaches to graffiti, we have asked Energy Australia and the Glebe Chamber of Commerce for copies of their graffiti policies.

It is noted that Marrickville Council has established legal aerosol art sites, with businesses, schools and residents offering wall spaces to be used for the project.

SUPERMARKET TROLLEYS

Recent experience suggests that the Trolley Tracker system is not working satisfactorily. The Society has written to the Australian Retailers' Association seeking a review of the effectiveness of the system.

Notice Board

NEWS FROM THE GLEBE LIBRARY

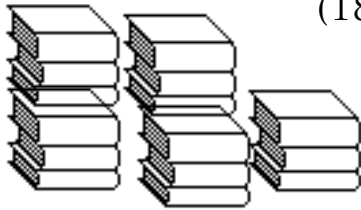
1) The Friends of Benledi and Glebe Library are holding their annual

MONSTER Second Hand Book Sale

outside the Glebe Library

Donation of books are very welcome – you might like to check your bookshelves and deliver any pre-loved books to:

Community Room at Benledi
(186 Glebe Point Road)
between 9 - 12 noon
on Friday 18 May



If you can't deliver, any one of the following Friends will arrange collection:

Ros Wheeler 9660. 7430
Allison Chiew 9660. 7869,
Heather Sykes 9692. 0595
Chris Newton 9660. 8349

Come along on the day – there will be free balloons for kids and all proceeds will go to Glebe Library.

Saturday 19 May from 9am onwards

2) **Hugh Mason**, local author and artist will be in the library on Saturday 19 May between 9 -12pm, to promote his new book *Homestead* and copies will be available for purchase. Come and meet Hugh and get your copy signed.

3) **FANTASTIC FANTASY** is our after-school storytime for school-aged children, at 4pm on Thursday 24 May.

4) Glebe Library now houses the **Toy Library**, which has proved a great success. New toys have been purchased, as well as children's videos which have been provided by the Friends of Benledi.



Carnevale!

Misa Criolla (Ramirez)

Catulli Carmina (Orff)



presented by the

**Sydney University
Graduate Choir**

and the traditional Latin American
Music Band

Los Incas

in the Great Hall,
University of Sydney

Musical Director: Christopher Bowen

Tickets \$25

Enquiries and reservations:
phone 9327. 1460 or 9660. 6363

Saturday 12 May at 8 pm

An introduction to

LEARNING CIRCLES

Learning Circles Australia is a programme of Adult Learning Australia. Materials and training are provided free of charge.

A learning circle is a self-managed learning group of people, sitting around a table, in a meeting room or a private lounge room, discussing and learning about issues of importance to them, say environmental management, euthanasia, or Australia as a Republic.

Free six weekly training sessions will be held St. Helen's Community Centre, 184 Glebe Point Road, beginning on Friday 4 May.

At the end of six weeks it is hoped to develop Learning Circles in all suburbs of the Municipality.

Leaflets are available at Glebe Library.

**For more information and
bookings phone**

Valerie Joy, 9367. 9043

For Your Diary ...

Friday	4 May	Learning Circles training sessions begin – see Notice Board
Wednesday	9 May	Glebe Society Management Committee Meeting 7.30 pm Toxteth Hotel Meeting Room – all welcome
Friday	11 May	Beer Tasting and Brewery Tour – BOOK NOW! Flyer with booking form enclosed – see p4
Saturday	12 May	Sydney University Graduate Choir – see Notice Board
Saturday	19 May	Friends of Benledi and the Glebe Library Annual Book Sale see Notice Board

ADVANCE NOTICE

June	Breakfast in Blackwattle Bay Park , see p7) dates to be
August/September	Annual Fund-Raising Dinner and Auction , see p5) announced

We are glad to publish letters or articles:

on any matters of interest to Glebe

on any topic raised in the *Bulletin*, or

on any issues relating to The Glebe Society.

All correspondence should be addressed to:

**The Glebe Society Inc
Box 100 PO
Glebe 2037**

DISCLAIMER

Views expressed in this Bulletin are not necessarily those of The Glebe Society Inc.

The Glebe Society Inc

MANAGEMENT COMMITTEE

President	Bruce Davis	9660. 7873
Vice-President	Jeanette Knox	9660. 7781
Immediate Past President	Russell Stewart	9660. 8324
Secretary	Liz Simpson-Booker	9518. 6186
Treasurer	Patrick McNiece	9552. 6656

Committee Members:

Andrew Craig	9566. 1746	vacancy	-
Alan Hunt	9660. 2407	Cynthia Jones	9660. 2451
		Marianne von Knobelsdorff	9692. 0916

SUB-COMMITTEE CONVENORS

All convenors are *ex officio* members of the Management Committee

BAYS AND FORESHORES	Collin Hills	9660. 8608
ENVIRONMENT	Jan Wilson	9660. 2698
– including Noise Pollution	Andrew Craig	9566. 1746
FRROGS	Roberta Johnston	9552. 3248
PLANNING	Neil Macindoe	9660. 0208
TRANSPORT AND TRAFFIC	Steve Stewart	9660. 5845

PROJECT TEAMS

Centenary of Federation	Liz Simpson-Booker	9518. 6186
Clean Up Glebe	Horst Schwarz	9660. 7926
Conserving Glebe Heritage	Christine Whittemore	9660. 7969
Foreshore Walk and Cycle Way	Judy Vergison	9692. 9200

CONTACTS

Archivist	Lyn Milton	9660. 7930
Historian	Max Solling	9660. 1160
Membership List Manager	Gail Pratt	9662. 6656
New Members Contact	Paddy and Gail	9552. 6656
Bulletin Editor	Bobbie Burke	9692. 0343
Assistant Editor	Cynthia Jones	9660. 2451

in this issue:

- Is Glebe Clean? - let us know, pp1-2
 - Vale Glebe Point Road, p3,6
 - Malt Shovel Brewery Tour and Tasting, p4
- BOOK BY FRIDAY 4 MAY! FORM ENCLOSED**
- What's Happening at Blackwattle Bay?, p5

The GLEBE
Box 100 PO



SOCIETY Inc
Glebe 2037

POSTAGE
PAID

... as from 1 July 2000

MEMBERSHIP OF THE GLEBE SOCIETY INC.

Ordinary	\$40
Concession:	
Student/Pensioner	\$20
Institution	\$100

Write to Box 100 PO Glebe 2037 or phone the Secretary,
Liz Simpson-Booker, on 9518.6186

If you have a matter that you would like to discuss with the
Management Committee, please ring the Secretary and
arrange to come to a meeting.

CARE FOR THE COMMUNITY

Report:

- dumped trolleys 1800 641. 497
- dumped litter 9560. 6169
- dumped cars 9367. 9222
- aircraft noise 1800 802. 584

COPY DEADLINE

for the next issue:
Tuesday 15 May

Please send to

PO Box 100 Glebe
32 Lombard Street, or
<bobbieb@cia.com.au>