

'Our Built Heritage is Our Identity. Let's Preserve it'



This is the wording above the building in the picture. The building isn't in Glebe—it isn't even in Australia. Can you guess where it is? See page 7 for a clue.

Successful workshop on strategic goals

A productive and cheerful workshop was held on Sunday 16 March to develop statements of the goals the Glebe Society will be working towards over the next five years. Those taking part included a good representation of our membership, with both new and long-standing members joining representatives from the Management Committee.

In the first step participants jotted down the possible changes they thought might occur in Glebe over the next five years – both good and bad. Dozens of possibilities were suggested, and as we shared ideas and read all the contributions we clustered them into groups. From these groups key ideas emerged about the changes we wanted to see, and that the Society should work to achieve.

The workshop agreed on the following as our goals for the next five years:

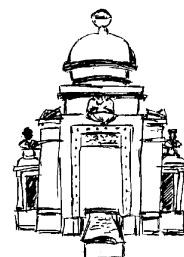
- retain and strengthen our unique heritage as a substantially intact 19th century townscape and important urban conservation area;
- lead the way on local initiatives in sustainability – energy, water, waste reduction and biodiversity;
- develop a new Town Plan that maintains and enhances the village character and ensures a high standard of new development;
- improve and extend public transport, encourage walking and cycling and minimise traffic on our streets;
- develop and extend open space linkage within Glebe and to adjoining communi-

ties, as well as developing opportunities for recreational green spaces;

- encourage diverse and prosperous commercial and business activity that enriches the experience of residents and visitors;
- celebrate Glebe's diverse population and perspectives;
- promote and enhance the intellectual and cultural life of Glebe for all age groups;
- extend support services, networks and facilities.

Over the next few weeks many detailed ideas will be summarised and added under the appropriate goal, to give a better sense of the changes we are aiming for. These more detailed statements will be posted on our website, www.glebesociety.org.au, and published in the next edition of the *Bulletin*. All members are invited to send their comments – on changes or additions they would like to see – by email to: secretary@glebesociety.org.au.

Anzac Day Service War Memorial Foley Park



Friday
25 April
7.30am
All welcome

Heritage Matters

Are Glebe's heritage treasures at risk?

The long awaited review of the NSW Heritage Act indicates that most power rests with the Planning Minister and recommends amongst other things that:

- on an annual basis 'the Heritage Council and the Director General of the Department of Planning should set a thematically based forward program. The program would be agreed with the Minister and include the order in which nominations or types of nominations would be progressed';
- the public could nominate only within those themes, except in exceptional circumstances;
- councils would be required to review Heritage listings in Local Environment Plans and where there is insufficient background information to support the existing listing the Council would be required to provide the information or remove the item from the listing.

A quick review of the City of Sydney Heritage database for Glebe and Forest Lodge shows many listings with incomplete information. The City of Sydney must necessarily rely upon the capacity of groups such as the Glebe Society, to know their community and by liaison with the Council to provide accurate information.

The beauty of Glebe lies in its heritage. If we act effectively and provide missing information then the proposed changes can favour Glebe and we can protect its heritage. If we do not act, our indolence puts Glebe's heritage treasures at risk.

I am arranging a presentation by Council staff to more adequately explain the implications of the NSW Heritage Act and what we can do to assist. I will let you know the date and venue shortly.

- Dianne Gray

Victoria Park Gates

The City of Sydney and the University of Sydney held a ceremony on 18 March to mark the official return of the historic Victoria Park Gates from the University grounds to their original position on City Road near the corner of City and Parramatta Roads.

When the University of Sydney handed the land for Victoria Park to the City in 1924, the sandstone and iron gates which had marked the entrance to the University since 1870 were put in storage. The gates were relocated further up City Road in the 1940s.

In 2004, following the joint initiative of the University and the City's planners it was agreed that the City and the University would cooperate to relocate the gates back to their original position, directly in line with the University's historic quadrangle clock-tower and bell chamber.

The University of Sydney Heritage Tours

Guided historic tours of the Camperdown Campus are available from University Heritage Tours.

The one-hour tour covers the 150-year history of the University's Quadrangle and surrounding environs and provides insight into the architectural, historical and cultural significance of the campus.

Tours are available during the week at a cost of \$11 per person (\$6.60 for seniors).

If you are interested in being part of a group please contact Dianne Gray on 9518 7253 or msco@bigpond.net.au with preferred days.

\$30,000 grant for Wireless House

The Sydney Partners in Preservation panel has awarded \$86,000 to winner of the popular vote **Waverley Cemetery Gates**, \$40,000 to preserve **Mosman's Clifton Gardens Pool** and \$30,000 to preserve **Wireless House in Glebe**.

Glebe's Wireless House, which was used as a public broadcasting facility during the Great Depression, will use its funding to ensure the site can again become a feature in Foley Park with the view to occasional 'broadcasting'



Neil Macindoe outside the Wireless House. Photo: Danny Aarons, *The Glebe*

History will be preserved

A big thank you to *The Glebe* newspaper and your readers for their efforts to ensure the Glebe Wireless House is restored and revitalised. Your votes have helped preserve an important part of radio history for future generations of Australians to enjoy.

**Neil Macindoe, Planning Convenor,
The Glebe Society**

**(Published in *The Glebe*,
Thursday, 20 March, 2008)**

Reminder - Heritage Grant Applications

The closing date to lodge applications is **6pm on Monday 21 April**.

The Heritage Grants Program provides matched funding up to \$10,000 to encourage owners of heritage sites and buildings, both private and not for profit, to undertake new conservation work which, without the financial assistance of the grant, may not be able to occur.

Full program guidelines, eligibility and selection criteria are listed in the Heritage Grants Program 2008/2009. An Application Form and Guidelines are available on the City of Sydney website, www.cityofsydney.nsw.gov.au.

Planning Matters

Sorry this month's report has to be so long, but all the matters raised are urgent. - Neil Macindoe

20 Glebe Point Road

We all know No 20. At least we *think* we do. It is unmistakable, because it is a square building very close to the street with a glasshouse on top.

As such, it is a curiosity. The square structure and glasshouse were built by Dr Theodore Potts in 1920. However, as so often in Glebe, one curiosity obscures an even greater one. Behind the square building stands *Montrose*, the original house, still almost intact. As with so many early Glebe buildings its origins are obscure, but it is a villa built about 1860, possibly as a doctor's house, with a most unusual feature: its upper floor has a curved roof, one of only a handful from this period in Australia.

Council has received an application to remove the front building and restore the villa to its original glory, including its posted verandah and a more appropriate fence. I shall be quite sad to see Dr Potts' waiting room and laboratory demolished. It is not without its own cultural and historical significance. Potts was the doctor appointed to treat members of a Victorian Friendly Society called the Druids. Friendly Societies were the social insurance of the artisan working class from which the present health and building societies and credit unions sprang. There is an Oddfellows Dispensary almost opposite where Fair Trade Coffee now operates.

The original villa however, to be restored as a doctor's surgery, will be a significant embellishment to a stretch of Glebe Point Road where too little of the original building has survived unaltered. Restaurant Atelier next door is a very different cottage from the same period ...

Glebe Conservation Study

... which brings me to this absolutely key document. When there was the likelihood of large scale development in Glebe, such as making redundant industrial sites residential, the instruments controlling new development, first LEP 20 and later LEP 2000, were crucial. However, while the fundamental controls are still valuable, as

the larger sites are developed their relative importance declines, and the role of heritage, always vital to Glebe, correspondingly increases. This requires some mental adjustment, especially for those whose introduction to and experience of planning were primarily with larger sites.

'Development' in Glebe is now more likely to mean extensions and alterations to existing buildings, or more rarely, demolition and replacement. It also means adaptive reuse of existing heritage buildings such as *Bellevue* and the Tram Sheds. Whatever it is, with a few exceptions such as Harold Park, it is likely to involve heritage.

As mentioned in previous *Bulletins* the Glebe Conservation Study makes significant changes. Seven Conservation Areas, unified by similar styles, replace the existing single area. Glebe Point Road is given special status, with its many Heritage Items vetted and reorganised. Eleven new Heritage Items are listed. Every building and streetscape in the new Conservation Areas is classified. It is not possible to give all the detail in a short *Bulletin* article, so at the moment those who are interested, and I hope there are many, should consult Council's website.

On Monday, 3 March, I attended Council's Planning Committee, and the result is the following list of points which Council was to consider at their full meeting on 10 March.

1. Corner Glebe Point Road and Broadway – as well as the Jubilee Fountain, the Dave Sands memorial and the City of Sydney boundary stone should be listed as Heritage Items
2. The Model and Moxham building should be listed and included with other Glebe Point Road and Broadway buildings in St Philips Conservation Area.
3. All original shopfronts on Glebe Point Road, including 112 and 112a, should be retained as Heritage Items.
4. 229-231 Glebe Point Road has an early Victorian building behind shopfronts added in 1890, and hence should be retained as a Heritage Item.

5. The Tram Sheds and Jubilee Park including the railway viaduct should be included in a Conservation Area, presumably Toxteth. They are generally of a similar period.
6. The Recommendations should include active strategies to identify and research Heritage Items for adding to the existing list. The Society would be happy to work with Council in this endeavour.
7. The Recommendations should include a strategy for managing detracting buildings. This should include guidelines to owners for options such as appropriate colour schemes so buildings harmonise better with Conservation Areas, as well as graded measures to increase compatibility suitable for inclusion in Development Applications.

Council should consider alternative nomenclature and grading. 'Heritage Streetscape' suggests other streetscapes are not. The current grading proposal for streets suggests lower value, and hence greater vulnerability, for some streets.

It is probable that a final report will be on exhibition shortly, and I will seek multiple copies for interested members.

Bellevue, 55 Leichhardt Street

Further to the report in the February *Bulletin*, a meeting of Glebe Point residents on 12 March considered a further amendment to the original DA, which now limits functions to one on Saturday night until 10 pm and one at Sunday lunchtime. This second amendment should by now be on the Council website, should you wish to inspect the details. Some residents reiterated their concerns about traffic and parking.

The Management Committee considered the amendment later on the same night. It was agreed to be an improvement, although it remains to be seen how adequately the traffic issues will be dealt with.

The Committee resolved to support the latest amendment, but to continue to

Continued on next page ...

... continued from previous page

press for the best solution to the traffic and parking issues, especially through discouraging private vehicles and encouraging access by water.

1-9 Glebe Point Road, Hellenic Herald building

This marble and glass monster from 1975 is one of the eyesores of the Broadway end of Glebe Point Road. The scandal surrounding its original approval, and the lift shaft projecting far above the building, is one from which Leichhardt Council never recovered.

Apart from the Spicy Sichuan restaurant and an Aboriginal employment office on the ground floor, the six storey building (two lower levels cannot be seen from Glebe Point Road) is largely empty. Nevertheless, for reasons that are unclear, the owner continues to seek additional floor space. The latest application is for two partial additional floors sandwiched into the space created by the rooftop pergola. This pergola, like many other works on the building, was constructed, apparently without approval, over a weekend. Unfortunately Leichhardt Council was not alert enough to prevent it.

Some time later the owner submitted a DA for the pergola together with a residential unit on the roof at the back. Again unfortunately, Leichhardt Council approved the DA with a condition the pergola be cut back. Typically, although some work seems to have been carried out on the roof, this condition was never carried out.

The carrot being offered this time is the removal of the small plant room on top of the lift shaft. Given the development history of this building, this work is most unlikely to be carried out, and is in any case minor in relation to the height of the shaft.

The Society believes the best strategy is to refuse the current DA and to insist that the work carried out under the Leichhardt approval be completed, at least as far as the partial demolition of the pergola is concerned.

It is particularly important that the City be made to realise people do care about what happens at this end of Glebe Point Road, even though there are few permanent residents nearby. Hence we are asking as many members as possible to object, and to contact businesses and residents they

know at this end and ask them to object as well.

The main points for objection follow.

- The floor space ratio of the present building already exceeds the permissible FSR for a Commercial building of 1:1 by five and a half times.
- The additional floor space will increase this excess to 5.9:1.
- Under LEP 2000 Clause 23(1) (a), consent must not be granted for any non-residential development in any zone exceeding an FSR of 1:1.
- Even before the pergola was built 1-9 was higher than adjacent buildings. The excess height is now more extreme. The proposed additional floor space reinforces it. It exceeds the height controls proposed in the Glebe and Forest Lodge Urban Design Study.
- The appearance, scale and height of the building are out of character with surrounding buildings, with the commercial strip, and with Glebe Point Road generally, and so are the design, elevation, fenestration, materials and finish.
- There are numerous Items of Environmental Heritage nearby on both sides of Glebe Point Road (11, 13, 13a, 27, 29 and 33 on the eastern side; 14, 14a, 20, 22, and 24 on the western side, and 281-285 on the corner of Parramatta Road, the Jubilee Fountain and associated Items). All of them are impacted adversely by the present building, and all of them will be worse affected if it expands.
- The site lies within the Glebe Conservation Area. It currently has an adverse impact on the Conservation Area, and further expansion will make the impact worse.
- The pergola already increases the negative impact of the building. Any application that makes it more permanent should be refused.
- The applicant has a long history of unauthorised work and failure to carry out conditions of consent. This behaviour should not be rewarded.
- Leichhardt Council failed to manage development of the site adequately. The City should act firmly and not make the same mistakes.

Naturally those objecting should choose points about which they feel

most strongly, and address them to Anthea Kalodikis at the City of Sydney, with copies to the Lord Mayor and local councillors Robyn Kemmis and Verity Firth.

NB: In the February *Bulletin* I reported that the State Government was proposing to control all developers' contributions. This was true at the time of writing, but apparently the Government has done a backflip, except in the case of a few councils, though still insisting the contributions be used only in relation to the particular development for which they were collected. Let us hope the government can be persuaded to give up its other less welcome changes as well.

- Neil Macindoe

Planning Sub-committee Convenor

Bellevue beauty in line for heritage honour

The magnificent house *Bellevue* on the shores of Blackwattle Bay in Glebe, has been submitted for entry to the National Heritage Awards. 'This stunning 19th Century villa has undergone a painstaking \$1.32 million restoration, which has successfully brought the Victorian era home back to its former glory,' said Lord Mayor Clover Moore MP ...

... 'The City of Sydney helped the people of Glebe realise a long-held dream to see *Bellevue* as it stood a century ago. This restoration marks the completion of Stage 3 of the City's \$15 million redevelopment of Glebe Foreshore'.

The National Heritage Awards will be announced at a presentation lunch on 7 April, with *Bellevue* in the 'Build Heritage Project over 1 million dollars' category.

- City of Sydney press release

Pillar for posting

The City of Sydney is planning to install nine cylindrical stainless steel poster pillars in various footpath locations throughout the City of Sydney, with the dimensions; 640mm in diameter, and 2550mm high. Pillars will be used by the general public for bill posting and notices. Cleaning will be managed by Council.

The location proposed for our pillar is Glebe Point Road near Cowper Street, outside GNC Organic Supermarket.

Who lived in your street?



The sketch is from the DA on City of Sydney website.

417 Glebe Point Road

In last month's *Planning Matters*, Neil Macindoe reported on a development application for Durham Court. Lyn Collingwood has been doing some research.

Durham Court at 417 Glebe Point Road is currently the subject of a DA before the City of Sydney. The property consists of a house dating from 1910 with an attached block of flats at the rear.

When Durham Court was being constructed practically all its neighbours had fanciful titles: *Beethoven, Farleigh, Glenburnie, Newtonia, Hillbrow, Toorak, Ilfracombe, Penzance, Dunskey, Maryville, Tiverton, Bruce-dale, Douglasdale, and Allandale*. Some names have disappeared but others are still recorded at street level on plaques or overhead on parapets. At number 415 Glebe Point Road was *Sidcup*, for many years the home of dentist Ormond McDermott, his wife Mary and their 10 children (including Sir Emmett who, as Sydney's Lord Mayor 1969-72, was responsible for the preservation of the Queen Victoria Building and the removal of east-west motor traffic from Martin Place).

Durham Court's first owners were Rowley (Roland) Walker, a produce merchant and grister* born in Glebe, and his second wife Frances. They moved from *Lynwood*, 61 Arundel Terrace, in the early part of 1911, taking with them their old phone number (Glebe 189) and Rowley's son by his first marriage, Leslie Hollingworth, a clerk. Rowley's brother John, also a produce agent, and sister-in-law Pearl moved in with them. Rowley ran his business from premises in Sussex Street and Goulburn Street.

The Walkers remained at Durham Court until 1917, when they moved up

the road to *Bidura* at number 357. By the time *Bidura* was converted into a Depot for State Children, the Walkers had gone to Coogee where Rowley died aged 54 in 1921. His wife survived him until 1944, at the same address.

In 1918 Reginald John Jacobs, a city solicitor, and his wife Florence Theodora moved into 417 Glebe Point Road. By 1923 Durham Court Flats had been built. Long-term tenants included Charles Cox, a taxi driver, Harry Parsons, a mechanical engineer and Mordena Grogan and her daughter Gertrude, a student. The flats were also home to the families of a street traveller, a musician and a composer. Durham Court remained the property of Reg Jacobs until about 1930. Its essential character appears little changed since that time.

- Lyn Collingwood

* a grist-mill is a mill for grinding grain - *The Chambers Dictionary*.

The Wearne Family in Glebe

On board the *Harbinger* which docked in Sydney in February 1849 was the 13-member bounty immigrant Wearne family from Cornwall. Joseph, a miller, and his wife Susannah landed with their children: **Ann** 18 dressmaker, Jane 17 draper's assistant, **Joseph** 16 clerk, **John** 15 blacksmith, **Thomas** 13, **William Carvosso** 12, Elizabeth 10 (she died at Liverpool in 1860), James Teare 8, Susan 7, Emma 5 and Charles Wesley aged one. The Wearnes went on to have so many children (11 each was the norm) and so many of them took on a parent's or dead sibling's name that, in an effort at clarity, those with known direct Glebe connections have been highlighted in bold type.

A fellow passenger on the *Harbinger* was Henry Breakspear, a painter, who married Joseph's eldest daughter nine months after landing. When they wed in the Wesleyan chapel, newly built among paddocks in Chippendale, both parties gave their address as 'The Glebe'. **Ann's** sister Jane was married in 1853 in the same church to Ralph Broadbent, a draper from Yorkshire.

The Wearnes retained their connection with the Chippendale Chapel on Botany Road (now Regent Street) for at least 60 more years. One incident involving a family member is recorded in some detail. In 1864 Charles Wesley Wearne, a nominal Methodist, was in the church with other teenagers at a revivalist meeting conducted by visiting preacher 'California' Taylor. He said 'I don't feel a bit like going up to the front, but I don't want to keep the other fellows back'. Stepping out into the aisle, he said, 'come along, boys!' and lining up after him in a body they went up and were converted that night.

After digging on the Victorian goldfields Joseph senior set up a bakery and the Collingwood Flour Mill at Liverpool (Wearne Road Bonnyrigg still exists) before his death in 1856. Many of his descendants carried on his trade. Son **John** and grandson John junior operated the National Mills in Goulburn Street. From the mid-1880s John senior lived at 126 Glebe Road. 'A very old colonist' and a JP, he died at his home (132 Glebe Road) in 1900. Educated at Fort Street, John junior lived at 114 Rowntree Street Balmain before moving to 137 Johnston Street Annandale where he died in 1909. He owned mills in Gunning, Cootamundra and Wallenbeen - the last rebuilt after destruction by fire.

Thomas was apprenticed to a tinsmith and lived with the family for seven years before settling at Liverpool in the late 1850s. A metal nameplate inscribed 'Thomas Wearne' for Anchor Flour Mills held by the Powerhouse Museum indicates that by 1869 he had set up a foundry in Sussex Street. Within nine years Thomas established the Glebe Foundry at 46-80 Cowper Street, making tram and railway rolling stock and bridge parts. He let it be known that he could manufacture all types of equipment:

Continued on next page ...

... continued from previous page



Thomas Wearne

brake vans, first-class composite passenger cars, single and double deck tram cars, the 'Jumbo' combined car and engine, Baldwin type steam tram motors and Middleton's consolidated locomotives. Thomas' firm built iron bridges for railways at Goulburn and at Wells Street Redfern, iron

cargo sheds at Circular Quay, and a tramway – track, wharves and rolling stock – from Duck River to Parramatta Park.

After the NSW Government bought the Chisholm estate at Eveleigh for railway yards in 1880 (another Glebe connection – Mary Chisholm had subdivided AB Spark's land grant at Glebe Point in 1853) tenders were called to build 100 engines as demand for livestock waggons was outstripping supply. The protectionist Commissioners were keen to use colonial labour and materials and gave a contract to build 25 goods engines to Thomas Wearne, also a protectionist, at the Glebe Foundry. After nearly finishing two and preparing the components for two others Thomas, the victim of bank foreclosures, had to relinquish the contract and the four engines were sent to the Eveleigh workshops for completion. Newly appointed Commissioners then sent an urgent order to their traditional suppliers in the USA and England for the rest of the stock.

A devout Methodist, Thomas was superintendent of the Chippendale Sunday School and steward of the Glebe Circuit. He was also a JP and a long-serving member of the Glebe Borough Council in the 1880s when he was living in *Elizabeth Cottage* 123 Derwent Street Forest Lodge. Thomas junior, an engineer and iron-founder, was listed at 2 Wentworth Terrace, Cowper Street in 1882, at 80 Cowper Street in 1887, and by 1890 had moved to 35 Derwent Street.

Another son, William Jeffrey, was also in Cowper Street in 1882. A coachbuilder, he married Jane Turton of Forest Lodge in a Wesleyan ceremony at 9 Westmoreland Street in 1884. Their daughter Ruby Eleanor (who became a teacher) was born in 1886. In 1887 the family was living at 103 Glebe Street, but by 1890 had moved to Yule Streetm Petersham – possibly to *Wearneville* where Joseph, another miller, lived.

Thomas senior died at Liverpool in 1914. In 1870 he had begun making fireproof safes with his nephew William Breakspear who worked with him from boyhood. One Wearne and Breakspear safe was transported to Bingara for use by his brother James Teare's son Walter, a stock and station agent who went on to become a grazier and State parliamentarian. A Wearne and Breakspear safe can still be seen in the old Court House in the town where James opened a flour mill in 1881. The safe-making firm remained in operation until at least 1913.

William Carvosso was living in St Johns Road by 1882 and by 1895 was set up as a property valuator at number twelve. In 1899, after he had moved to 4 Ross Street, his directory listing was in large bold type, perhaps indicating success. In 1903 he was listed as a general agent at 4 Elger Street. He died in 1904.

A son Frederick Charles, born at Moulamein in the Riverina, became a JP, a commercial traveller and representative for the *Newcastle Morning Herald*. With an office in the city, he lived in 1898-9 at 69 St Johns Road, moved to 171 Wigram Road in 1900, and by 1906 was at 119 Derwent Street. He subsequently went to Pymble, then Hunters Hill where he died in 1934. Frederick married twice. Frederick M Wearne was born in Glebe in 1897

to his first wife Lucy Caldwell, possibly a relative.

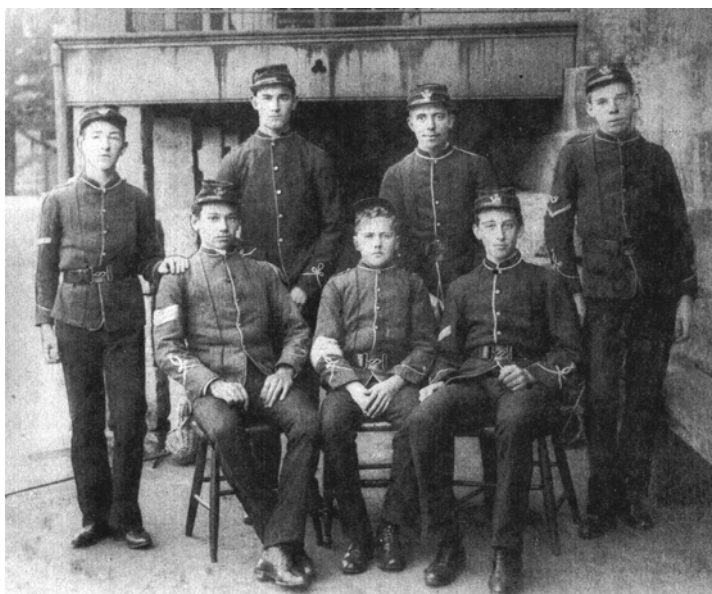
William Carvosso had married Martha Caldwell in 1856 at Parramatta; the following year his older brother **Joseph** wed her sister Isabella.

By 1861 Joseph and his brother John occupied premises, including a steam flour mill, at 69-75 George Street in The Rocks. (Wearne's mill was one of the buildings demolished during the bubonic plague scare of 1900.) By 1864 Joseph had gone into partnership at Bathurst Street and 124 Parramatta Street with flour miller James Pemell, a fellow worshipper at the Chippendale Chapel, a Sydney alderman and returning officer for the 1859 Glebe council elections. The firm Pemell and Wearne became the Anchor Flour Mills. At Bathurst Street hot showers and a Turkish bath were provided for the mill hands.

A friend of Henry Parkes, Joseph entered politics and was MLA for West Sydney 1869-74. His private residence then was 398 Crown Street, but he may have moved his household to Arundel Terrace by 1882. He died in 1884 at Collingwood House, Liverpool, leaving an estate valued at £1800.

In 1889 Joseph's eldest surviving son Joseph Herbert died at Liverpool. (A brother Joseph Henry had died as a toddler in 1861 – it was a common Victorian practice to name children after dead siblings.) The next year Joseph's widow moved to Glebe.

Continued on next page



Richard Wearne (standing - second from left) in the Sydney High School Cadet Corps circa 1886-87

Glebe News

Mark Sunday 18th May, 11am-4pm, in your diary for the big Celebration of Wentworth Park Day!

Wear RED anything for Glebe and Forest Lodge. We have challenged Prymont/Ultimo (Blue) to a big all-day community competition. Glebe and Forest Lodge's reputations are at stake here.

There will be games of every kind including Pétanque, a huge tug of war, egg and spoon races, a mini marathon, sack races - and a soccer match between UTS (representing Prymont and Ultimo) and Sydney Uni (representing Glebe and Forest Lodge).

Even your dog can get involved and earn points for Glebe. We will be running dog races for all those family pooches (and their owners) who have ever fantasised about running on the big track. Here is their chance to compete for the Wentworth Park Mongrel Cup, 2008. I kid you not. It is a cup to end all cups and it will be the envy of any old greyhound (greyhounds are forbidden to enter, by the way).

Our own famous Max Solling and the wonderfully articulate Shirley Fitzgerald will be giving talks on the history of the Park.

Food and drinks will be on sale at the Park so plan to stay the whole day.

By your presence you will indicate your value of and support for this wonderfully iconic park with its amazingly colourful history and which has such a vital open space role to play in our present and our future.

Come along, wear red anything and get involved. If you would like to volunteer to help in the running of the day don't hesitate to ring Anne Fraser on 9660 3047, or 0409 893 047 or contact me by email; annefraser01@optusnet.com.au.

- Anne Fraser, BCC
and Convenor of the Wentworth
Park Celebration Day



Now can you guess where the picture on the front page was taken? See page 8.

It takes a whole team to replace Cynthia!

Due to ill health, Cynthia Jones has stepped down from her role as Webmaster. A new web group has formed to work on developing the site. The new team appreciates all the work she has done over the years. It is a credit to her that the site is so comprehensive and informative.

Thank you Cynthia.

Another great talk about food by Heather Bentley

Introduction to food in the Renaissance

In 1533, Magellan's ship returned without him, but the sea routes he navigated opened the way to the lucrative spice trade. Heather identifies the gastronomic trends of the Golden Age, and traces the influence of politics, theatre and the Romans on Renaissance food.

Benledi Room, 186 Glebe Point Road, Glebe

Saturday 5 April 1.30 – 2.45pm.

Bookings: 9298-3060, or askthelibrary@cityofsydney.nsw.gov.au

... continued from previous page

With her five surviving children aged from 17 to 29, Isabella Wearne settled in *Restcliffe* adjacent to Tranby Villa, probably to be close to her sister Martha, married to William Carvosso. Isabella's address was by 1896 given as 58 Boyce Street. By January 1897 the family had moved to *Edenhurst* (now reverted to its original name *Margaretta Cottage*) 6 Leichhardt Street. Martha Elizabeth kept house, while sisters Amy Mabel and Minnie Flora were teachers, as was their brother Richard Arthur. Another brother, William Taylor was a chemist; he became a dispenser at Sydney Hospital. Isabella died in 1901. By 1907 William and his sisters had moved into 8 Leichhardt Street; by 1910 they had left the area.

Minnie and her brother William, both unmarried, moved to *Collingwood* at Wentworth Falls. William died in 1925; Minnie in 1932.

Joseph's youngest child Richard was educated at Sydney High and Fort Street Training School. He was a pupil teacher at Ashfield and North Granville primary schools before graduating BA with English Honours. In 1897 he was appointed science and art master at Ipswich Grammar. He was a keen geologist. In 1901 he became principal of Ipswich Technical College and from 1918 head of Central Technical College, Brisbane. Among other positions held he was chair of the Local Coal Tribunal, the Wages Board, and the Education Board of Queensland. Hundreds attended his Brisbane funeral in 1932.

In the 1890s clairvoyant Madam Wearne conducted seances and held private consultations in rooms at 61 Broadway. Was she a descendant of the *Harbinger* immigrants? The activities of the Spiritualist Hall at 79 Glebe Road will be examined in a future 'Who Lived in Your Street?' article.

-Lyn Collingwood

News and Notes

Thirsty Thursdays

Members and friends are invited to meet for dinner in Glebe on the first Thursday of each month at 7pm, to eat and talk with other people who live in Glebe. We visit a different restaurant each month, usually alternating between Asian and European cuisines. Put these dates in your diary and come along.

On 3 April, we will share a meal at *David Trees*, 123-125 Glebe Point Road. Please email edwinadoe@optus-net.com.au by the day before if you are coming.

On 1 May we will go to the other end of Glebe to *La Tavolaccia*, at 355 Glebe Point Road. There is no need to book.

The choice for Thursday 5 June is *Lien Vietnamese Malaysian Restaurant*, 331 Glebe Point Road.

Welcome to New Members

The following people were accepted as members of the Glebe Society at the February Management Committee meeting:

- Camilla Ip
- Margaret and Terry McMullen
- Danny Yee

We look forward to seeing them at future Glebe Society

Room needed

An employed and reliable 36 year old male Glebe Society member is looking for a room or something like a granny flat to rent somewhere in Glebe or surrounding suburbs. Ideally I would like a chores-rent arrangement. I would not be there 2 weeks out of every 6-7.

- Kevin (phone: 0417 403 924)

'Our Built Heritage is Our Identity. Let's Preserve it.'

Bruce Davis took the photo on the front page while on holiday in Shimla, India.

The photo of Bruce the Maharaja on page 7 was taken by a shopkeeper in [Bikaner, north west India](#), aided and abetted by Bruce's friendly tour driver.

Newtown Flicks

Society member Lyn Collingwood is part of the team organising the 2008 Newtown Flicks Short Film Festival to be held over three days in late May. New and emerging artists are encouraged to submit their short films, documentaries, mockumentaries, music clips, phone flicks and everything in between. Entries close on 24 April.

For information check out newtownflicks.com.au

David Nettheim, 1925-2008

Actor David Nettheim was a resident of Glebe from 1977 until about 12 months ago, when he went into a nursing home.

He was Andrew Craig's next door neighbour at 51 Glebe Street.

Andrew describes David as 'one of Glebe's treasures'.

The April and May Bulletins

Bruce Davis will be looking after the next two *Bulletins*. Please send any material for issues 3/2008 and 4/2008 to editor@glebesociety.org.au and not to my address.

- Edwina Doe

Bulletins by email

If you would like to receive your *Bulletin* by email instead of snail mail, please email editor@glebesociety.org.au

Our Local Member of Parliament

State Member for Balmain, Hon. Verity Firth MP.

Office address: 112a Glebe Point Road, Glebe 2037.

Senior Electorate Officer: Christina Harlamb, ph 9660 7586, fax 9660 6112, email christina.harlamb@parliament.nsw.gov.au

City of Sydney Councillors

Lord Mayor: Clover Moore MP

Councillors:

Phillip Black
Hon Verity Firth MP
Chris Harris
Marcelle Hoff
Robyn Kemmis
Michael Lee
Shayne Mallard
John McInerney
Tony Pooley

For enquiries: Please contact the City of Sydney on 9265 9333.



Forest Lodge Public School

Home of The Glebe Society Archives

Phone 9660 3530



For your diary ...

Thursday 3 April, 7pm – Thirsty Thursday – *David Trees*, 123-125 Glebe Point Road.

Saturday 5 – Sunday 20 April – National Trust Festival 2008 – *Our Place*. See *Bulletin 1/2008* and the NT Website for details of events.

Wednesday 9 April, 7.30pm – Glebe Society Management Committee Meeting – The Old Fire Station, 115 Mitchell Street.

Saturday 19 April, 2pm – 4pm. National Trust walking tour of Glebe, led by Maureen Fry. Phone 9660 7157.

Friday 25 April, 7.30am – Anzac Day Service, War Memorial, Foley Park. All welcome.

Thursday 1 May, 7pm – Thirsty Thursday – *La Tavolaccia*, 355 Glebe Point Road.

Tuesday 13 May, 10am – National Trust walking tour of Glebe, led by Carole McFadden. See the NT Website.

Wednesday 14 May, 7.30pm – Glebe Society Management Committee Meeting – The Old Fire Station, 115 Mitchell Street.

Sunday 18 May, all day – Wentworth Park Celebration Day. See p7.

Thursday 5 June, 7pm – Thirsty Thursday – *Lien Vietnamese Malaysian Restaurant*, 331 Glebe Point Road.

Wednesday 11 June, 7.30pm – Glebe Society Management Committee Meeting – The Old Fire Station, 115 Mitchell Street.

Contacting

The Glebe Society

Mail

All correspondence should be addressed to:

The Glebe Society Inc
PO Box 100, Glebe NSW 2037

Website

The Society has a growing website (www.glebesociety.org.au) for the information of members and anyone with an interest in Glebe.

The website will only flourish if members use the site. Send contributions or comments to webmaster@glebesociety.org.au

The Bulletin

We are glad to publish letters or articles on any matters of interest to Glebe, any topic raised in the *Bulletin*, or any issues relating to the Glebe Society. Write to the address above or email editor@glebesociety.org.au

Disclaimer

Views expressed in this *Bulletin* are not necessarily those of the Glebe Society Inc.

Bulletin deadline

The next edition of the *Bulletin* will be published at the end of April

The deadline for contributions is **16 April**.

The Glebe Society Inc

Established 1969

Management Committee:

President	Jan Macindoe	9660 0208
Vice-president	Bruce Davis	9660 7873
Immediate Past President	Bob Armstrong	9660 4189
Secretary	Liz Simpson-Booker	9518 6186
Treasurer	Bruce Davis	9660 7873

Committee Members: Dorothy Davis 9660 7873 Simon Fraser 9660 7560
Jan Wilson 9660 2698

Sub-committee Convenors:

All sub-committee convenors are *ex officio* members of the Management Committee

Arts, Culture and Media	Sue Ingram	9692 8534
Bays and Foreshores	Tony Larkum	9660 7030
Wentworth Park	Anne Fraser	9660 7560
Blue Wrens	David Mander Jones	9552 4172
Environment and Open Spaces	Andrew Craig	9566 1746
Glebe against Global Warming	Bill McCarthy	9660 5119
Heritage	Dianne Gray	0417 434 814
Infrastructure Defect Reporting	Margaret Sheppard	9660 4121
Membership	Cheryl & Bryan Herden	9660 7371
Planning	Neil Macindoe	9660 0208
Transport and Traffic	Chris Hallam	9660 3670

Adopt-a-Park Contacts:

Foley Park: Bobbie Burke (9692 0343) **Kirsova:** Fay & David Mander Jones
Paddy Gray Park: John Gray

Other Contacts:

Archivist	Lyn Milton	9660 7930
Blackwattle Cove Coalition (BCC)	Anne Fraser	9660 7560
Bulletin Editor	Edwina Doe	9660 7066
Event Coordination	Dorothy Davis	9660 7873
History of Glebe	Max Solling	9660 1160
History of the Glebe Society	Jeanette Knox	9660 7781
Liaison with CityRags	Bob Armstrong	9660 4189
Liaison with CoGG	Bruce Davis	9660 7873
Liaison with FLAG	Jan Wilson	9660 2698
Publicity	Sue Ingram	9692 8534
Website	Vicky Marquis	9552 2592

In this issue

- Strategy Workshop report - page 1
- Heritage Matters - page 2
- Planning Matters - page 3 - 4
- Who lived in your street? - page 5 - 6
- Wentworth Park - page 7
- Glebe News - page 7

The GLEBE SOCIETY Inc
PO Box 100 Glebe 2037



POSTAGE
PAID

Membership of the Glebe Society

Individual member	\$45
Joint (2 people, one address)	\$55
Household (more than 2 adults and/or children, one address)	\$60
Concession (student or pensioner)	\$20
Institution or corporate	\$110

Download a Membership Form from our website (www.glebesociety.org.au/AboutTGSI/Membership/Membership_application.pdf).

Or write to PO Box 100, Glebe, 2037 or phone the Secretary, Liz Simpson-Booker, on 9518 6186.

If you have a matter that you would like to discuss with the Management Committee, please phone the Secretary.

Community Contacts

Manager-Neighbourhood Services Centre: Glebe, Forest Lodge, Camperdown, Ultimo & Pyrmont: Nick Hespe.

Email: nhespe@cityofsydney.nsw.gov.au

Glebe Town Hall Office: 9298 3190 8.30am-5.30pm Mon- Fri

Sydney City Council Customer Service

Telephone (24 hours): 9265 9333

email: council@cityofsydney.nsw.gov.au

website: www.cityofsydney.nsw.gov.au

Glebe Point Road upgrade contact (24 hrs): Grant Donohue 0414 687 101, grant_donohue@gmwurban.com.au

Dumped Shopping trolleys: Trolley Tracker 1800 641 497

Waterway Garbage: NSW Maritime response - 9563 8592