

Trivia Night no trivial matter

One thing I learnt at the highly successful Trivia Night on 15 October, was that organising such an event is no trivial matter. Preparing the questions themselves was obviously a massive effort from the team involved, led by our Trivia Master, Simon Fraser. The questions were entertaining, challenging and varied, and covered Glebe in detail, and then further afield to NSW and Australia. Each round was accompanied by a 'visual clue' question, such as a series of photos of notable houses in Glebe, to be matched to their names. I was impressed by the dedication required just to put together that one question – and there were dozens more!

Fortunately all that effort, and the work of Dorothy Davis and her helpers, paid off. Sixty or so participants took to the challenges with enthusiasm and rowdy good humour. The value for the Glebe Society of reaching out to other community groups – in this case Glebe Public School – was evident in the broad scope of the audience, which included the Principal, Vicki Pogulis, teachers and parents from the school, as well as a team from the business community – Raine and Horne, led by Mari-Luise Agius.

The support from the business community generally was outstanding, with many businesses,



Vicki Pogulis, Dorothy Davis and Simon Fraser. Photo: Bruce Davis

listed on the next page, providing generous prizes. There's no doubt that the number, quality and variety of prizes contributed to the excitement of the evening, with participants vying for the many options, and many people leaving with the special pleasure of being a 'winner'.

The evening as a whole raised more than \$1,000 which will go towards the Society's gift to the Glebe Public School to mark the celebration of the school's 150 year anniversary. The school will use the money to purchase black-out blinds for the school hall, enabling them to show films and other visual presentations.

- Jan Macindoe

Christmas Drinks on 12 December

This year we have selected another interesting venue for our Christmas Party: the *Yuga Café* and Floral Design in St Johns Road, Glebe/Forest Lodge. Join members and friends for drinks and food in this charming terrace café with courtyards (if the weather is fine), surrounded by art works and flowers. *Yuga* means *elegance* in Japanese.

Date: Friday 12 December

Time: 6pm – 8 pm

Address: *Yuga Café*, 172 St Johns Road

Bookings: Book online or see the flyer in the next *Bulletin*.



Celebrate Glebe Public School's Sesquicentenary

- Come to the **School Open Day**, 7.30am - 3pm. See *Bulletin* 8/2008. All welcome.
- Come to the **launch of Skippedy Skip**, the new school fence, 12 noon. See page 9.
- Come to the **evening celebrations** being hosted by the Glebe Society for the School's 150th birthday, 6.15-8.30pm at the School Assembly Hall, Derwent Street entrance.

Members of the Glebe Society are invited to join ex-students and other key school supporters in the celebrations at which Lyn Collingwood will bring alive some of the school's history. Drinks and finger food will be served. A \$5 donation will be appreciated.

If you are coming and have not yet booked, phone Katharine Vernon on 9692 9583.

New Glebe Society President for 2009

The Management Committee is delighted to be able to tell members that Lesley Lynch, who joined the Management Committee following the AGM this year, has agreed to take on the role of President from the beginning of 2009. Lesley is a long-term resident of Glebe, and local activist. She has provided the following notes on her background.

- Jan Macindoe

I am very pleased to re-commit to local community activism through this role in the Glebe Society. After my last 'retirement' I spent most of two years in Papua New Guinea working on AusAID development projects and have been slow to readjust my perspective. Apart from the Glebe Society my current commitments are to activism through the Council for Civil Liberties and the on-line independent advocacy group GetUp.

My connection with Glebe is a long one. I first lived in the area in the late 1960s, when student scholarships were sufficient to rent a terrace house in Arundel Street and local child care was provided gratis by the Greater Sydney City Council. Like many ageing locals I was blooded in the relatively dramatic battles of the 60s and 70s. In the late 1970s I picked up a lot of esoteric information about the area while I was doing a community study of Balmain for my PhD in History.

From 1991 when we moved back to Glebe until 2004 I was still buried in a pretty mad workload and was rarely in Glebe during daylight hours! Then when I pulled out I found myself in PNG for two years rather than an in-



Jan Macindoe (left) with Lesley Lynch. Photo: Bruce Davis

tended eight weeks. So I feel as if I have only surfaced as a real person on the local scene in the last couple of years.

My working life prior to PNG moved across higher education (initially teaching in history and politics and more recently in various strategy and planning roles) and public service (major stints in as a ministerial adviser and administrator in education and training; policy and community roles, ethnic affairs and a shorter diversion into environmental protection.). No-one will be surprised to know that the inner west featured quite a bit across these public sector agencies.

I was involved in the recent elections for the City of Sydney Council and was interested to note the high regard that the Glebe Society and CoGG have earned from many quarters for the smart and professional way they pursue their advocacy agendas. It will be fun and satisfying to be part of this group.

- Lesley Lynch

And a new Heritage Convenor

Lyn Collingwood has taken over as Convenor of the Heritage Subcommittee, replacing Dianne Gray. Lyn writes:

Although I've been a professional researcher at Mitchell Library for nearly 30 years, I have undertaken postgraduate study in Historical Archaeology and have worked on several editions of *The Australian Encyclopaedia* and other reference works, as a local historian I consider myself an enthusiastic amateur.

You learn by doing. You just need to know where to look. *Who Lived in Your Street?* is an ideal project for any storyteller curious about Glebe's buildings and the people who have lived in them. It's also vitally important that we have documentation to preserve our heritage. Early in the New Year I'd like to run a couple of small informal workshops on how to be an historical sleuth. Please introduce yourself if you're coming to the Glebe Public School Evening Event on Monday 3 November (I'll be wearing a name tag). Otherwise, I look forward to your email, sent to heritage@glebe.society.org.au.

- Lyn Collingwood

These Glebe Point Road businesses supported the Trivia Night

AB Hotel
Badde Manors
Broadway Cellars
Deli for your Belly
Galluzos Greengrocer
Glebe Books
Glebe Liquor
Inner City Cycles
Le Petit Tarte
Mano Espresso Café
More's Café
Naggy's Café
Pets on the Point
San Churro Chocolateria
Sapphos Books
Sonoma Bakery
The Pudding Shop
The Toxteth Hotel

Many thanks to you all

Eleven Pubs in Glebe

There was much discussion about the answer to one Trivia Night question; name the 10 public houses in Glebe. It seems that one had been



Some of Glebe's pubs.

forgotten. Our eleven watering holes are AB (Ancient Briton), Australian Youth, Excelsior, Forest Lodge, Friend in Hand, Harold Park, Kauri, Nag's Head, Off Broadway, Roxbury and Toxteth

Planning Matters

1-9 Glebe Point Road

The City refused an application to increase the floorspace of this controversial structure. The new owner has appealed. One good result of the new planning legislation is that changes to proposals have to be advertised before the Court considers them, and this was the case here. The amended plans were even worse than those originally proposed, and the Glebe Society has objected.

Objectors met on Tuesday, 21 October to discuss the case with Council's solicitor. The Court hearing will begin on-site at 9.30 am on Thursday, 6 November.

417 Glebe Point Road, Durham Court

Amended plans have also been submitted for this proposal, but the

changes are quite minimal and the Society proposes to renew its objection. Bruce Lay has agreed to assist us in our discussions prior to finalising our objections.

16-18 Arundel Street

The University of Sydney, owner of these terraces used for overseas students, has applied to restore their balconies to their original condition.

Disclosure of political donations

From 10 October anyone lodging or commenting on a planning application, including a request for a proposal to be considered of State significance under Section 3A, or for changes to a town plan or development control plan, is required to disclose any political donations

of \$1,000 or more over the previous two years, and including the period of lodgement.

However, the new Minister, Kristina Keneally, is reported on page 5 of the *Sydney Morning Herald*, 8 October, as being less inclined to leave decisions up to the Planning Assessment Commission, created by Frank Sartor just before he was demoted to the backbench, and more inclined to make decisions on matters declared to be of State significance herself. In any case, decisions made under Section 3A need to be closely monitored. The Society has specifically requested that Harold Park Paceway, if and when a redevelopment is proposed, should not be considered a State significant site.

- Neil Macindoe

Community groups consult with Verity Firth

Verity Firth, our local member of parliament, invited community groups to meet with her about local issues in early October. Jan Macindoe and Lesley Lynch, on behalf of the Glebe Society, met Verity and discussed three issues of continuing concern: the future of Harold Park, funding of the Fish Market re-development, and the role of the Bays Taskforce.

The future of Harold Park

We were able to give Verity information on the University's proposals for the Harold Park site, should they be able to acquire it. She was particularly interested to learn that their main proposed use was for student accommodation, as this supports the State government's policies on increasing affordable rental accommodation. Verity will hold discussions with the University, and seek information about the intentions of Harold Park Trotting Club.

Fish Markets redevelopment

Verity was interested in information we were able to pass on from BCC about the possibility of Section 94 funding (developer contributions)

being available for use in upgrading the Fish Markets. She will seek information from both the Premier's office and the Minister for Planning.

Bays Taskforce

Although we were informed more than a year ago that a Taskforce had been set up to develop a coordinated plan for Rozelle and Blackwattle Bays, as well as Glebe Island and the Rozelle marshalling yards, we have been unable to gain any further information about its role. Verity was able to confirm that the Taskforce, with representatives of the various government departments with responsibilities for aspects of the Bays, has met on various occasions. However, there is still considerable difference of opinion between them on what should be the priorities for the Bays, especially for the use of Glebe Island, and no progress has been made on development of a Master Plan. Verity agreed to discuss the matter with the new Minister for Planning, Kristina Keneally, in an effort to get agreement to proceed towards a Master Plan.

- Jan Macindoe

"I always wanted to learn about ..."

Well now you can. A new University of the Third Age (U3A) is being established to cater specifically for residents of the City of Sydney. Known as "City U3A" it will offer courses relevant to retired people.

You are invited to the launch of

CITY U3A

When: 3pm, 8 November 2008.

Where: 280 Pitt Street, Sydney, at the Sydney Mechanics School of Arts, between Park and Bathurst Streets.

Come and hear what is planned for City U3A:

- Why a U3A for the City of Sydney?
- How can you become involved?
- What will it offer?

For more information phone Neil Macindoe on 9660 0208, email cityu3a@gmail.com, or check out the website at www.cityu3a-sydney.u3anet.org.au (coming soon).

Traffic

Making Glebe more pedestrian friendly

Since Glebe has been incorporated with City of Sydney, members of the community have been working collaboratively with Council in order to make Glebe more pedestrian friendly.

Work first commenced back in 2004, when the initial concept of *Revitalisation of Glebe Point Road* was launched. Many forums and workshops were conducted, with a high priority to make Glebe Point Road more pedestrian friendly. The concept of shares zones was promoted, whereby cars, people and cyclists all blend together. The value of this approach is that traffic proceeds with caution and respect. The clutter of signage disappears. The speed of traffic is automatically slowed and the need for traffic lights is eliminated. The difficulty that exists in Glebe is that City of Sydney does not have complete autonomy to make these decisions. State agencies such as the RTA and Sydney Buses (STA) exert their authority.

Many towns and cities in Europe are already working with this philosophy with great success. For the same thing to happen in Australia there will have to be a major cultural shift. The wins we have gained to date include an overall speed limit of 40km per hour on Glebe Point Road, narrowing of the road area at pedestrian crossings to allow for better vision and no traffic signals outside Glebe Public School.

The intersection of Glebe Point Road and St Johns Road poses structural problems. These include underground cabling for traffic lights and very complex underground services. In addition, the bus that travels along Glebe Point Road from the north and turns east into St Johns Road towards the Casino requires a wide turning circle. Hence a set back for traffic stopping for a red light is required on St Johns Road (eastern side) to allow the bus to turn.

The narrow footpath on the north eastern corner and non-alignment of St

Johns Road on the eastern and western sides of Glebe Point Road require significant changes in traffic management. However at this point in time, Council is not going to proceed with the footpath reconstruction and blisters, as the external consultants did not support the proposal. A *Cycleway* is planned for St Johns Road and the intersection will be re assessed in the future.

I wish to assure people that the Glebe Society, in collaboration with CoGG (Coalition of Glebe Groups), has been working assiduously in order to achieve safer and friendlier outcomes for pedestrians in Glebe.

- Jan Wilson

If you are interested in further reading, Google the following web sites:

German Town does away with Traffic Lights

Fewer Traffic Signs. Better Safety?

Streets as Places (streets_as_places)

Just one of the problems ...

These are old wooden sleepers which supported the tram tracks. The tracks are in reasonable condition as they have been buried since 1958. Hence the road sub-surface is unstable, as well as being about 600mm higher than the footpath. This means that the foundation and road must be rebuilt.



Sleepers revealed during the Glebe Point Road upgrade.
Photo: Jan Wilson, 13 October

Mystery water seepage

The water seepage that leaks into gutters at the intersection of Avenue and Victoria Roads has occurred for approximately 30 years. City of Sydney Council has investigated this problem in the past and the location was checked again on 18 October in a prompt response to a local resident's concerns.

Investigation involved contacting St Scholastica's school and also the residents who live in Avenue Road. The school staff advised and some of the residents also confirmed that the water has been flowing constantly for 30 years or more, and that Sydney Water has also investigated the site and could not find any water leaks in their water mains.

One of the long-time residents also stated that the school used to have a

well for water supply, many years ago, and that there was also a water pond in the rear of one of the properties in Avenue Road. This pond was filled in when the property was redeveloped, and that seepage has been a problem for as long as they can remember. Sydney Water, St Scholastica's School, and the residents at this location have not been able to find any leaking water pipes where this water could be coming from.

The only conclusion that everyone can come to is there is a natural water course through this location, and that groundwater seepage is collected in the school or the private property and then discharged at the kerb.

Maybe in this era of drought and climate change we should think of a way to harvest this valuable resource!

Who taught at Glebe School?

On Monday 3 November Glebe Public celebrates its 150th birthday, making it one of the State's oldest public schools. The Glebe Society is participating in the celebrations. Former students and teachers together with professional actors will relive incidents from the school's rich past. Some stories of the school's early headmasters appeared in Bulletin 7/2008. Now it's the ladies' turn, writes Lyn Collingwood.

Glebe Public School's first schoolmistresses

In the 1850s several women in Glebe advertised themselves as schoolmistresses: Mrs Henrietta Jones (Francis Street), Miss Bowen (Bishopsthorpe Terrace) and Hester Wood (Hawley Cottage, Bay Street). Little is known of these local entrepreneurs who set up business before the Public Schools Act 1866 and the Public Instruction Act 1880, which made school attendance compulsory.

The introduction of the Pupil-Teacher system, whereby students were engaged to teach while being instructed themselves after school hours, usually by the Principal, led to an increase in the number of female teachers. However many did not last long, resigning because of poor pay, marriage or the pressures of the classroom and constant travelling from one school to another. Florence Beeby who retired at age 30, her health 'having permanently broken down', had been posted to 13 schools, the last Glebe Public. Other women had dealings with an unsympathetic Department. Miss Hargreaves, who commuted to Glebe from Liverpool by train, was 20 minutes late one morning. She was told to furnish 'an explanation as to why you do not reside nearer the school at which your duty lies'. Expenses claimed for transferring from one rural school to another, sometimes over hundreds of miles by train and coach, were scrupulously checked item by item.

Until 1881 when older students were separated by gender, Glebe Public students were classified as Infants or Primary. Although they did not have a dedicated building until 1911, infants were enrolled in Derby Place from 1862 when the Glebe National School was opened. During the next decades their ever-growing numbers were accommodated in a rented Wesleyan hall (sometimes infested

with rats), a closed-in weather shed, and classrooms within the boys' and girls' schools, two-storey buildings difficult to evacuate. Infants were exposed to 'fearful smells' from the 'foul-smelling manure pit' of nearby livery stables.

Ellen Flannery (ca 1838-1927) was appointed Glebe Infants Mistress in January 1877. She was the widow of school Inspector Edmund Hayes Flannery who had died at Albury nine months earlier, leaving her with a four year old son. Transferred from William Street Infants, she remained at Glebe for 15 years. Her pupils were drilled daily in calisthenics. Glebe infants were part of the dumb-bell display at the Sydney Cricket Ground in 1900 in aid of the Boer War Patriotic Fund.

The Mistress's problems were those of headmasters Flashman, Sheehy and Cornish: overcrowding, the rapid turnover of poorly trained staff, arrears in fees and unrealistic expectations of parents. She was censured by the Department for sending a seven-year-old back home to fetch an adult after he'd turned up to enroll clutching his fees and a note giving his age, name, address and denomination. 'Will you kindly inform me what form of ceremony there is to go through before a child can gain admission to the Public School?' demanded M D Harmston of 59 Mitchell Street.

Among both pupils and staff there were periodic outbreaks of serious illnesses such as measles, whooping cough, scarlet fever and smallpox. In 1882 city doctor Willan Jackson treated a patient with typhoid, a little girl who attended Glebe School where 'the contents of a choked-up drain were baled out with the pannikins from which the scholars drank'.

Mrs Flannery retired in 1892 on a teacher's pension and died at Mosman on 13 February 1927. Her barrister son George Ernest (1872-1945), educated at Sydney High and St Ignatius College, won the Sydney University gold medal in law and was secretary to Sir Edmund Barton when he was Prime Minister.

Agnes May Kilminster, aged 28 and Presbyterian, succeeded Ellen Flannery. She was a Pupil Teacher at Newtown and Manly before graduating from the Hurlstone Teacher Training College of Female Teachers in



Agnes Kilminster, infants' headmistress 1892--6.
Photos courtesy Glebe Public School archives

1884. After returning to Manly, she was transferred Darlinghurst, Redfern Girls, June Junction, Orange and Ultimo before taking up the Glebe appointment in July 1892.

Within a year the infants' enrolment had reached 600 and average daily attendance was 527.5. The Mistress, working with a staff of eight including six Pupil Teachers, made an urgent appeal to the Department for an extra

Continued on next page...

... continued from previous page

assistant. The cheaper option, another Pupil Teacher, was sent.

In 1896 Miss Kilminster asked to transfer to the girls' department at Glebe but was instead promoted to the headship of Albion Street Girls. For most of her working life she lived at Manly with two unmarried sisters (housekeeper Alice Mary and music teacher Mary Edith Elsie) and another relative, Mary Edith Helena Kilminster, also a teacher.

Sewing was a compulsory subject for girls from the time they could thread a needle. Patience Henerie née Hall was one of the State's first 13 work-mistresses, appointed in 1873 immediately after the death of her husband Thomas, a teacher at Wallabadah. With three children under five (born in Sydney, Morpeth and Wollombi) she 'had to work'. Her first posting was also her last: she taught sewing at Glebe for 15 years from 1874 until 1889, commuting from King Street North in The Rocks.

In 1885 Mrs Henerie took time off after she nursed a servant who contracted typhoid. 'I waited upon her not knowing what the illness was until the fever had thoroughly developed', she told the District Inspector. Thompson responded: 'There is nothing to show whether this attendance on the part of Mrs Henerie was due to an imperative domestic duty or merely a voluntary act on her part ... if the latter, it should be pointed out to her that she should not have undertaken the office of nurse without the Minister's sanction'.

Patience Henerie resigned on a pension of a little over two pounds a week, supporting her comment that her salary had never been 'very large'. She died at home 29 Lower Fort Street Dawes Point on 17 June 1915, survived by her children Jessie Robinson and Oswald. Her younger daughter Olive Maud had died in 1904.

Amelia 'Maudie' Thomasin Hicks (1843 – 1928) was work-mistress at Glebe from mid 1889 until her retirement in 1907.

Born in Devon, she arrived in Sydney as an assisted immigrant with her Presbyterian parents and two siblings aboard the *Wilson Kennedy* in January 1852. Her first appointment was in 1881 at Trinity CE Granville South. She then taught at Penrith-South Creek and, after refusing a transfer to Albury, at Sussex Street and Annandale. She died at Burwood on 14 May 1928 and was buried with her brother David (1845-87), Senior Inspector Bathurst district, and her sister Eliza (1836- 95) who had died while she and Amelia shared a house at 47 Albany Road Petersham.

In October 1880 the school was re-structured. A notice board 'Public School, Girls' Dept' was ordered, together with new hat pegs, pointers, work presses, map stands and forms up to 12 feet long for seating. The new Girls Department was put under the temporary charge of Mary S Pinnington, classified 2B, 'pending the appointment of a Mistress, qualified according to the Regulations'. Transferred from the Primary Department were an assistant Bessie MacSweeney and Pupil Teachers Alice M Thompson and Jessie Paton. Miss Pinnington's headship lasted about a month.

Mary Pinnington began her career in 1870 as a 13 year old Pupil Teacher at Christ Church CE. She then taught at St Andrews CE, St Philips CE and Cleveland Street before the Council of Education appointed her in 1877, at age 19, the first Mistress of Girls at the Society for the Relief of Destitute Children's Randwick Asylum. Here about 200 girls received a secular education in reading, writing, dictation, arithmetic, geography and singing.

In mid 1878 she was sent to Wagga Wagga. In late 1880 before her brief



Mary Pinnington, headmistress of the girls' school 1880.

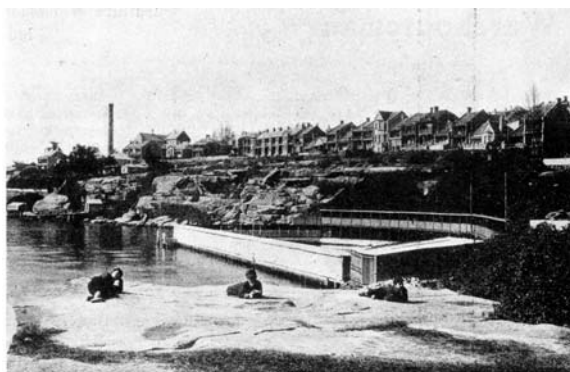
engagement at Glebe she was in charge of Devonshire Street. From January 1881 until 1886 she was in charge of Burwood Infants. She then worked at Stanmore Public and Darlington Infants before resigning in 1890 to marry Albert Adams at Glebe.

Bessie MacSweeney remained in the Girls' Department until at least 1891.

Alice Thompson resigned in 1881 amid accusations that she'd purloined school fees, borrowed money from parents, pawned books and was hardly ever home. Jessie Paton resigned in 1883.

Harriet Elizabeth Elphinstone became Girls' Mistress at Glebe in January 1881. A Presbyterian, she was the oldest child of William jnr, a carpenter and builder whose parents Janet and William (a cabinet maker turned builder), after emigrating from Scotland in 1832 settled in Glebe, on Paramatta Street and later Broughton Street. The extended Elphinstone family became prominent local builders and architects.

In 1869 Harriet, aged 16 became a Pupil Teacher at Kent Street, transferring to William Street two years later. She then moved to Newcastle South, West Maitland Girls, William Street Girls and Bathurst Girls before her appointment as Infants Mistress at Burwood in 1880, by which time her father was living in Derby Place Glebe adjacent to the school and Wesleyan Church. In 1886 she married William Munro, a local



Elkington Baths, Balmain (now Dawn Fraser Baths). Glebe girls swam here on Friday afternoons. A nearby coal mine was still operating.

builder, and resigned from teaching. In 1909 she and her husband and her younger sisters Florence Emily, Ethel Maud and Annie Balfour were compensated for the demolition of two cottages in Derwent Place to enlarge the school's playground. Harriet's father and Alexander Leckie Elphinstone had leased the church lands in 1856.

Emily Robson was a Pupil Teacher at Trinity CE and Crown Street Infants and, after attending training school, in charge of Granville Infants and Camperdown Girls. In September 1886 she was appointed Mistress of Glebe Girls. Miss Robson started cookery classes in a closed-in verandah in the boys' building ('The experiment may be made but very cautiously' commented Head Office) and formed a girls' swimming club which travelled to Elkington Baths at Balmain on Friday afternoons. She had problems with some Pupil Teachers. Emily McNamara asked for a transfer 'because of lack of respect from Mistress Robson'. Others were happy to stay, Annie Gilbert turning down an offer of work as an operator in the Telephone Department.

Emily Robson remained at Glebe until 1904, moving on to Hurlstone Practising and Paddington Girls. Her successor was Mrs Ada De Lambert who retired in 1918.

- Lyn Collingwood



Letter to the Editor

Dear Editor

I sometimes worry that 'Who Lived in Your Street?' gets bogged down in biographical details, but the *Bulletin's* readership extends well beyond our suburb. Descendants have contacted me with stories of skeletons in ancestral cupboards and questions such as whether someone owned or rented a property.

An email has just arrived from Matt Hall in Bethesda, USA, with a correction to the article on Hilda Booler (*Bulletin* 1/2008: page 5 column 1). Ellen Teresa Alleyn who married Michael Joseph Conlon was the **sister** of

William Placid Alleyn. William Placid's **daughter** Ellen married Henry McSweeney.

Confused? In the nineteenth century often three generations had the same name, and the name of a dead child was given again to a newborn. Families were large – funeral notices included a bewildering number of relatives of the deceased. People joining a religious order lost their birth names. And if you're baptised John Smith ...

Any corrections are gratefully received as I access only what is in the public record. Birth, marriage and death certificates cost!

Lyn Collingwood

PS. Matt Hall, who completed his PhD while living in Eglinton Road, would like any information on the family of his ancestor Michael Joseph Conlon, a Broughton Street resident for many years. He was a potter, Glebe alderman, Protectionist, cricketer with Cornstalk Stars Club, and avid bowls player.

Matt's email is hallma@mail.nih.gov.

Glebe Community Safety Plan

The City of Sydney is developing a Glebe Community Safety Plan. The process involves collecting and analysing Police crime data, conducting an audit of existing programs, examining existing research and inter-related strategies and developing responses which are either new or build on existing initiatives.

The plan will involve an extensive community consultation program involving informal discussions in local parks and reserves in partnership with Police and Glebe Community Development Project as well as workshops targeting key stakeholders and the community. The draft plan will be completed by December 2008.

Eight community BBQs at selected sites across the Glebe - Forest Lodge area have been held as part of the safety plan consultation.

- Suzie Matthews
Manager, Social Policy and Community Support, City of Sydney

Painting of Glebe given to the Society

Suddenly Glebe is a richer place with the addition of a sensitively rendered water-colour painting of terrace houses, painted in Glebe in the late 1970s or 1980.

Artist Bob Phillips sold the painting, *Glebe*, at a Western Art Group exhibition in the Canberra Theatre Gallery in about 1980. Since then buyer Shorus McKenzie has been the custodian of the work. She feels now is the time to hand it on to others who will appreciate it for its fine artistry and its relevance. Shorus took the time to track down the Glebe Society, and now there are plans for the whole community to benefit from her generosity.

The painting captures the feel of inner west terrace houses of the times with characteristic shutters, screens and iron tracery, well before 21st century renovators set to work. The sun-baked façade of ochres and red iron colours is beautifully drawn while still conveying the artist's emotional connection to the subject.

The plan is for the Glebe Society to donate a frame and then to display the painting in the Glebe Library making the City of Sydney custodians of the work for all to enjoy.

- Sue Ingram



Glebe, painted by Bob Phillips and donated by Shorus McKenzie. Photo: Sue Ingram

Celebrating 40 years in 2009

This is the third in a series of specially commissioned articles by people who have played a part in the success of the Glebe Society, or who have observed it from the outside.

This month we hear from Russell Stewart, who was President of the Glebe Society in 1997/98 and 1998/99. His artist wife Christine was Secretary for the same years and convened the Wentworth Park Committee from 1989 to 1996.

Christine designed the Glebe Society logo, designed as part of the Society's 21st birthday celebrations, as well as the Three Bridges Walk logo. She also advised on the colour scheme for Benledi when it was converted to the Library.

Russell and Chris continue to live in, and enjoy, Glebe. They are part of the select band of residents who have moved houses within Glebe.

Memories of a Past President of the Glebe Society

On a fiercely hot day at the end of January 1987, Chris and I moved from Pymble to 36 Toxteth Road, Glebe.

We were excited, but also a bit nervous. We had no previous connection with Glebe, however Chris was keen to live on the South side of the Harbour, since she had her art studio in Redfern, our children were all at University and I worked in the City.

At the beginning, we found it exciting to find ourselves living in a part of Sydney that had an entirely different feel and character than Pymble. In those days, in the early mornings, you would often hear Harold Park horses clip clopping along the street. And boys would go around selling newspapers house to house on Sunday mornings.

Chris became convener of the Glebe Society's Wentworth Park Committee (a committee of one!) with the unrewarding task of chasing politicians to improve Wentworth Park for use by people rather than greyhounds. It has been gratifying to see recent changes starting to open up the park.

At that time, another unrewarding task was that of persuading someone to take on the job of President of the Glebe Society.

One reason I took it on was because it seemed like a good way to make a contribution to the community. There were lots of people doing good work for the Society on a number of fronts.

At the same time, it seemed to be a while since we had all stood back and thought about what our priorities were. We held a meeting one Saturday morning (years before Kevin Rudd did a similar thing!) to discuss our

priorities and some ways to improve the operation of the Society. Judy Vergison organised a professional facilitator and was instrumental in planning the event. At the end, the exercise was generally felt to be productive.

Ted McKeown was instrumental in the preparation of a new constitution, to ensure that the Glebe Society Inc took advantage of the legal protection for all involved, as an incorporated association.

We discussed holding a 'team building' exercise for the Society - to go out on Blackwattle Bay in Dragon Boats. We had the operator of the Dragon Boats along to a meeting. I still recall him saying 'and of course we will need a couple of Zodiacs'. He explained that these were rubber dinghies with outboard motors, there to fish out anyone who ended up in the water! The idea died at the instant Committee members grasped that there was even a remote possibility of ending up in the water! In the end the idea turned into a successful ferry trip, which as I recall raised about \$700 for the Glebe Youth Centre!

We were keen to progress the concept of the foreshore walk. Chris (having designed the Glebe Society's present logo) designed a logo for the walk - based on the three bridges, Sydney Harbour, Anzac and Iron Cove. We also decided that initially the walk should be inaugurated going beside the Harbour wherever possible and deviating into surrounding streets where the shore was inaccessible. The idea wasn't implemented in that form, however it is great now to be able now to walk, run or cycle for a

good distance beside the bay. And you only have to go down there to see how popular it is.

We held some of our meetings in a room upstairs in the Toxteth Hotel (free of charge, courtesy of the hotel). I recall that during one of those meetings Sydney was hit by a huge hailstorm - which did a great deal of damage, mainly in the Eastern Suburbs. At its height, our discussion was practically inaudible due to the hail thrashing against the windows.

At that time the membership records seemed to be in a mess. It was an enormous task to get them in order - essential to keep track of who had and had not paid their membership dues. Eventually it was done.

It seemed important to me that readers of the Glebe Society *Bulletin* should hear some views regularly from the President. So each month I used to provide a column. It was a salutary discipline to have to focus on an issue, such as graffiti, which deserved thoughtful attention.

Then, as now, preservation of both the built heritage and the natural environment was a major focus of the Glebe Society's activities. I recall the diligent and careful work done by Neil Macindoe and others to keep track of significant projects where heritage values could come under threat.

I found the period as President challenging - particularly keeping involved in the wide range of issues occupying the Glebe Society while balancing work and family demands. At the same time I found it most rewarding.

- Russell Stewart

Glebe News

The 19th Annual Glebe Music Festival

Double Bach: The Harpsichord in Duet

St Scholastica's Chapel, Glebe.

Sunday, 23rd November, 3pm

About the Players:

Monika and Stan Kornel are the directors of **The Sydney Consort**, an ensemble of outstanding quality which performs regularly in Australia in historic St Augustine's Church, Balmain, as well as touring overseas. Over the last 10 years they have built up a reputation of excellence in baroque music, presenting works which are rarely heard as well as those that are more popular.

Diana Weston is the director of a newly-formed group **ThoroughBass** whose intention is to explore the substantial repertoire for countertenor, in particular the complete cantatas for alto by Handel in the year of his anniversary, 2009.

As well, **ThoroughBass** focuses on recorder music seeking to expose this instrument's unique voice. A regular concert series is held at St Luke's Church, Mosman.

Rita Woolhouse has many years experience as both performer and teacher in Sydney and Wollongong, and now Canberra where she performs chamber music with the **Marjorian Ensemble**. She also frequently is involved in folk and blues events where she can indulge her improvisatory skills.

Further details of this year's Festival are on www.glebemusicfestival.com.

Two 'locals' honoured

Jane Spring

On 10 October, an Honorary Fellowship of the University was conferred on Jane Spring, who fights constantly for the rights of rowers, especially in Rozelle and Blackwattle Bays. Her citation says, in part:

... For nearly two decades Jane Spring has been an inspiration and an example to the University community of how to meet and triumph over adversity and face disability [life in a wheelchair following a car accident in 1990] with courage, determination and intelligence. Her story and her accomplishments personify Sydney University's central ideals and vision.

... Here at Sydney University, as well as having a 'Blue' for Rowing, Jane has a 'Gold' for services to the Sydney University Women's Sports Association. She is also an honorary member of Sydney University Sport. Our Women's Rowing Club has also named one of their newest boats 'Jane Spring'.

Max Solling

Max Solling's book *Grandeur and Grit: a history of Glebe* has been shortlisted for the Premier's History Awards. Max is one of three contenders for the history award, and the only one with a very local focus. Two of the three books have been published by Halstead Press.

Look out for the announcement of the winner in a few weeks' time.

Glebe schools

Help launch new Glebe Public School fence

The Lord Mayor of Sydney, Clover Moore, MP and Vicki Pogulis, Principal, Glebe Public School invite you to attend the launch of *Skippedy Skip*, the new school fence public artwork by the artist Nuha Saad and the City of Sydney - on the occasion of Glebe Public School's 150th anniversary.

The launch is at 12 noon Monday 3 November, Glebe Public School Glebe Point Road

Skippedy Skip is part of the City of Sydney's Public Art Program and one of three major new artworks planned for the Glebe Point Road upgrade

Forest Lodge School Public Community Day

As part of a series of events to celebrate the 125th anniversary of Forest Lodge Public School, all friends of the school and the local community are invited to attend a Community Day on Sunday 9 November between 1pm and 5pm.

The Community Day will be jam packed with plenty of fun and entertaining activities for kids and their families and provide a great opportunity for past and current students, teachers and families to re-unite and share their experiences of Forest Lodge Public School.

To commemorate this significant milestone, Forest Lodge P&C Association will launch a book titled *Forest Lodge Public School 125 Years*, which chronicles the history of the school and the key personalities and events which have made the school an integral part of the Glebe community.



Kindermusik Village with Seniors

Kindermusik is a **fun music educational program** for children aged 0-18 months and their mothers, organised by the City of Sydney. **Seniors also participate and interact** with the babies and mothers through music and singing during the class.

Many children don't have grandparents living close by and this class encourages a link and appreciation between the older age and the younger one, as well as creating a community in Glebe.

The program is on **Tuesdays at 2pm** and runs until to 9 December. The sessions are free for Seniors and held at **St Helen's Community Centre**, 184 Glebe Point Road. For more information, contact Jessica Swan on 9298 3050.

Cameron Tomes
Parent - Forest Lodge Public School

News and Notes

Thirsty Thursdays

Members and friends are invited to meet for dinner in Glebe on the first Thursday of each month at 7pm, to eat and talk with other people who live in Glebe. We visit a different restaurant each month, varying cuisines. Put these dates in your diary now.

On Thursday 6 November we will go to *Flavour of India*, on the corner of Glebe Point Road and Bridge Road.

On Thursday 4 December we will meet at *Café Otto*, 79 Glebe Point Road.

And we will meet for dinner on **Thursday 8 January**. The venue will be announced later, as some restaurants might be closed.

The numbers coming to these dinners are growing, so please email me or ring me on 9660 7066 by the Tuesday before the dinner to let us know that you are coming.

- Edwina Doe

Welcome to a New Member

Noel Prosser was accepted as a member of the Glebe Society at the October Management Committee meeting.

Noel has already been to Thirsty Thursdays and we hope to see him at future Glebe Society functions.

Glebe's Place in Space?

The National Trust Heritage Festival (4-19 April 2009) has the theme of 'Our Place in Space – Under the Southern Cross' to coincide with the 2009 International Year of Astronomy. If we are to participate in this Festival, we need to register our event/s by 28 November this year in order to be included in the National Trust publicity.

If you are aware of any astronomers (professional and/or amateur), living in Glebe, who may be able to suggest ideas or events, we would appreciate names and contact details.

- Liz Simpson-Booker

Talking Heads at the Toxteth

The Toxteth Hotel, 345 Glebe Point Road, is the venue for lively debates on alternate Thursdays. Google 'Talking Heads at the Toxteth' for more details.

Recycle your e-waste for free

As part of National Recycling Week, The City of Sydney will be holding an electronic waste drop off day on **Sunday 16 November** at the Bay Street Depot in Ultimo.

City of Sydney residents can bring along their e-waste which includes just about anything with a power cord such as televisions, computers, toasters, stereos, printers, mobile phones and VCR/video players.

The Actors' Forum ...

... presents a professionally performed reading of Nick Enright's witty romantic comedy *Daylight Saving*

Directed by Donald Macdonald with Judy Nunn, Suzanne Roylance, Stephen Pease, Elizabeth Connolly, Harley Connor and Patrick Phillips.

Sunday November 16 at 2pm at St Andrew's Congregational Church Hall (Mayflower Hall), cnr Darling Street and Curtis Road, Balmain.

Tickets on sale at the door from 1pm, \$20 or \$15 for seniors or concession .

Bulletins by email

If you would like to receive your *Bulletin* by email instead of snail mail, please email editor@glebesociety.org.au

Our Local Member of Parliament

State Member for Balmain, Hon. Verity Firth MP.

Office address: 112a Glebe Point Road, Glebe 2037.

Senior Electorate Officer: ph 9660 7586, fax 9660 6112, email balmain@parliament.nsw.gov.au

City of Sydney Councillors

Lord Mayor: Clover Moore MP

Councillors:

Phillip Black
Meredith Burgmann
Irene Doutney
Chris Harris
Marcelle Hoff
Robert Kok
Shayne Mallard
John McInerney
Di Tornai

For enquiries: Please contact the City of Sydney on 9265 9333.



Forest Lodge Public School

Home of The Glebe Society Archives

Phone 9660 3530



For your diary ...

Monday 3 November, 7.30am - 3pm - Glebe Public School Open Day.

Monday 3 November, 12 noon – launch of *Skippedy Skip*, the new school fence. See Page 9.

Monday 3 November, 6.15 - 8.30pm - Glebe Public School Celebration Evening - School Assembly Hall, Derwent Street, Glebe. See page 1.

Thursday 6 November, 7pm – Thirsty Thursday - *Flavour of India*, corner of Glebe Point Road and Bridge Road.

Saturday 8 November, 3pm - U3A establishment meeting, 280 Pitt Street, Sydney. See page 3.

8 - 30 November - 19th Annual Glebe Music Festival.

Sunday 9 November, 1-5pm – Public Community Day, Forest Lodge School. See page 9.

Sunday 9 November, 3pm - free Ralph Vaughan Williams concert, Great Hall, Sydney University.

Wednesday 12 November, 7.30pm – Management Committee Meeting – The Old Fire Station, 115 Mitchell Street.

Sunday 16 November, 2pm – *Daylight Saving* - The Actors' Forum – St Andrew Church, Balmain. See page 10.

Sunday 16 November, Glebe Street Fair.

Thursday 4 December, 7pm – Thirsty Thursday - *Café Otto*, 79 Glebe Point Road.

Wednesday 10 December, 7.30pm – Management Committee Meeting – The Old Fire Station, 115 Mitchell Street.

Friday 12 December, 6-8 pm – Glebe Society Christmas Party - Yuga Café, 172 St Johns Road.

Contacting

The Glebe Society

Mail

All correspondence should be addressed to:

The Glebe Society Inc
PO Box 100, Glebe NSW 2037

Website

The Society has a growing website (www.glebesociety.org.au) for the information of members and anyone with an interest in Glebe.

The website will only flourish if members use the site. Send contributions or comments to webmaster@glebesociety.org.au

The Bulletin

We are glad to publish letters or articles on any matters of interest to Glebe, any topic raised in the *Bulletin*, or any issues relating to the Glebe Society. Write to the address above or email editor@glebesociety.org.au

Disclaimer

Views expressed in this *Bulletin* are not necessarily those of The Glebe Society Inc.

Bulletin deadline

The next edition of the *Bulletin* will be published at the end of November.

The deadline for contributions is **Wednesday 19 November**.

The Glebe Society Inc

Established 1969

Management Committee:

President	Jan Macindoe	9660 0208
Vice-president	Bruce Davis	9660 7873
Immediate Past President	Bob Armstrong	9660 4189
Secretary	Liz Simpson-Booker	9518 6186
Treasurer	Bruce Davis	9660 7873

Committee Members:

Dorothy Davis	9660 7873	Dorothy Hoddinott	9692 0071
Lesley Lynch	9660 5084	Jan Wilson	9660 2698

Sub-committee Convenors:

All sub-committee convenors are *ex officio* members of the Management Committee

Arts, Culture and Media	Sue Ingram	9692 8534
Bays and Foreshores	Tony Larkum	9660 7030
Wentworth Park	Anne Fraser	9660 7560
The Environment		
Fortieth Year Celebrations	Mavis McCarthy	9660 5119
Heritage	Lyn Collingwood	heritage@ glebesociety.org.au
Infrastructure Defect Reporting	Margaret Sheppard	9660 4121
Membership	Cheryl & Bryan Herden	9660 7371
Planning	Neil Macindoe	9660 0208
Transport and Traffic	Jan Wilson	9660 2698

Other Contacts:

Archivist	Lyn Milton	9660 7930
Blackwattle Cove Coalition (BCC)	Anne Fraser	9660 7560
Bulletin Editor	Edwina Doe	9660 7066
Event Coordination	Dorothy Davis	9660 7873
History of Glebe	Max Solling	9660 1160
History of the Glebe Society	Jeanette Knox	9660 7781
Liaison with CoGG	Bruce Davis	9660 7873
Liaison with FLAG	Jan Wilson	9660 2698
Website	Vicky Marquis	9552 2592

In this issue

- Trivia Night report - page 1
- New Glebe Society President and Heritage Convenor - page 2
- Planning Matters - page 3
- Traffic - page 4
- Who taught at Glebe School? - page 5
- Celebrating 40 years of the Glebe Society - page 8
- Glebe News - page 9

The GLEBE SOCIETY Inc
PO Box 100 Glebe 2037



POSTAGE
PAID

Membership of the Glebe Society

Individual member	\$45
Joint (2 people, one address)	\$55
Household (more than 2 adults and/or children, one address)	\$60
Concession (student or pensioner)	\$20
Institution or corporate	\$110

Download a Membership Form from our website (www.glebesociety.org.au/AboutTGSI/Membership/Membership_application.pdf).

Or write to PO Box 100, Glebe, 2037 or phone the Secretary, Liz Simpson-Booker, on 9518 6186.

If you have a matter that you would like to discuss with the Management Committee, please phone the Secretary.

Community Contacts

Manager-Neighbourhood Services Centre: Glebe, Forest Lodge, Camperdown, Ultimo & Pyrmont: Nick Hespe.

Email: nhespe@cityofsydney.nsw.gov.au

Glebe Town Hall Office: 9298 3190 8.30am-5.30pm Mon- Fri

Sydney City Council Customer Service

Telephone (24 hours): 9265 9333

email: council@cityofsydney.nsw.gov.au

website: www.cityofsydney.nsw.gov.au

Glebe Point Road upgrade contact (24 hrs): Grant Donohue 0414 687 101, grant_donohue@gmwurban.com.au

Dumped Shopping trolleys: Trolley Tracker 1800 641 497

Waterway Garbage: NSW Maritime response - 9563 8592