



## Electric cars

# Glebe leads the charge



The charging station and GoGet Toyota Prius. Photo: Jan Macindoe

Derby Place in Glebe, next to Glebe Primary, is now the first location in Australia for a public, on-street, electric vehicle charging station. On Monday 24 May, the charging station was opened by Lord Mayor Clover Moore, watched by an audience of reporters, locals, and an excited group of students from the school. It will re-charge a converted plug-in hybrid Toyota Prius for the GoGet car share scheme. The Prius, which does not normally require charging, has been converted to function as an electric car, operating for about thirty kilometres on electric charge. After that, it switches to its normal hybrid operation. As the majority of GoGet customers make trips of twenty to thirty kilometres, it will in effect be an electric car most of the time.

GoGet plans to incorporate fully electric cars into its fleet when they are available on the Australian market in eighteen months to two years time. The charging station is powered by Green Energy supplied by Origin Energy.

There are about 3000 members of GoGet in the City of Sydney area, including 500 businesses, with 120 dedicated on-street car share spaces provided by the City. The company estimates that each GoGet car replaces seven to ten privately owned cars. GoGet members can book to use car share vehicles for short periods (from one hour to several days). They will be able to drive the plug-in electric hybrid at the same price as the other Prius cars in the GoGet hybrid fleet.

- Jan Macindoe

## Earth v Sky

At its Committee meeting on Monday 24 May, Council recommended a go-ahead for installation of the public art work, Earth v Sky.

This is the third of the three public artworks commissioned by the City of Sydney for Glebe, the first two being the Glebe Public School fence and the audio reactivation of the Wireless House.

Earth v Sky, by artist Allan Giddy, involves lighting the fig trees at the waterfront end of Glebe Point Road in complementary colours to the western sky at sunset. The lighting display will last only for the period of sunset.

Integral to the artist's vision for the work is the proposal to power the lighting by alternative energy. To achieve this, a domestic scale wind turbine will be installed near the entrance to Johnston's Creek.

Some concern had been expressed about the effect of the wind turbine on birdlife, and Council commissioned a report from the Australian Museum, which found that the effect would be minimal. Council has also appointed the Museum to monitor and report on any adverse effect on birdlife during the first year of operation.

- Jan Macindoe

## Membership renewals

If you are a member of the Glebe Society who joined before 1 January 2010, your membership is now due for renewal. Please see the enclosed renewal form and page 5 of this *Bulletin*.

# The Rozelle Rocket: a good idea but will it affect *Bellevue*?

Many of you will have read about the commencement of the water taxi service ferrying passengers to the pontoon at Campbell's Cove from Rozelle Bay, Blackwattle Bay and Jackson's Landing.

The Water Taxis can take up to 50 passengers and currently are programmed to run three services to Campbells Cove every morning and evening on week-days.

The introduction of this service has gained support from some sections of the community and concern from other sections.

One major issue of concern is the impact on traffic and parking at Glebe Point where the service will pick up from the Wharf outside *Bellevue*. The parking in this area is already at a premium and the Development Application for *Bellevue* has just been passed by the City of Sydney. This DA will allow for the operation of a café, seven days a week, seating some 60 people. Most of the community is delighted that at long last *Bellevue* will be used. However there will be an impact on parking and traffic. Unlike most wharves in the Harbour there is no bus connection with this wharf.

The water taxi service will exacerbate this situation and one has to ask why such a service is not required to undertake an environmental impact study, particularly when using wharves or pontoons in closely developed urban areas.

The situation should be monitored by Council to determine any negative impacts of the service and then if necessary an alternative pick up scenario could be negotiated.

It's a great idea but *Bellevue* is a greater idea and maybe there is only room for one.

- Susan Cleary

## Editor's note

Trips on this water taxi must be booked and paid for in advance. Google Rozelle Rocket for timetable and booking information.



Rozelle Rocket. Photo courtesy Inner Western Weekly

## Wentworth Park improvements to continue

Work to continue improvements to Wentworth Park in Glebe will begin in June.

The works, which improve visibility and connections between the sporting complex and northern side of the Park, include:

- removing the boundary wall and widening pedestrian access along Wattle Street;
- opening the viaduct arches;
- removing redundant buildings along the northern perimeter; and
- installing demountable toilets and change rooms in the complex with access from the park.

The City's previous improvements to the park include new paths and lighting, new exercise stations and an improved sporting field surface. A new children's playground is also being constructed.

Wentworth Park is one of the City's oldest parks and is very popular with residents, sporting groups and schools. The 15 hectare park is divided by the rail bridge and the sporting complex which, until now, has been surrounded by high brick walls on all sides and been inaccessible to park users.

From Clover's e-news  
7 May

# Is your family mutt a winner? Find out at the Community Games

The Wentworth Park Community Games will be held for the third time on 12 September.

The games bring together residents from Glebe and Forest Lodge to compete in a variety of more-or-less serious sports for the GUP\* Cup – actually one red and one blue gumboot mounted on a piece of wood. Points are accumulated for everything from gumboot throwing to pétanque.

The Cup was won by Glebe and Forest Lodge on the first two occasions and thus resides in the Glebe Library. After two consecutive defeats the denizens of Ultimo and Pyrmont are keen to wrest it from us this year.

The main attraction will again be the running of the Wentworth Park Mongrel Cup – a race for the family mutt run on the hallowed sand of the Wentworth Park greyhound track. All dogs are eligible to enter. Heats will be run for big dogs and little dogs and the heat winners will compete for the big prize.

There will be numerous events suitable for children and the day will culminate in a giant tug-o'-war pitting suburb against suburb, followed by the presentation of the Cup.

Other planned attractions include an historical display and historical talks, a sausage sizzle, a cake stall, and other food outlets.

The organising committee wishes to thank the Wentworth Park Sporting Complex Trust for making its facilities available for the Games.

The committee is seeking volunteers to help with events, particularly children's sports. If you would like to help please email [secretary@glebesociety.org.au](mailto:secretary@glebesociety.org.au) or phone 9660 7873.

- Bruce Davis

\* GUP stands for Glebe Ultimo Pyrmont. The person who named it is either geographically challenged or (more likely) had difficulty pronouncing GFLUP Cup.

## Café DA approved for Bellevue

Many thanks go to the gallant members, Jo Bastian, Graham Budd, Carole Heriman, Sue Ingram and Jan Macindoe, who spoke at the City of Sydney Planning Committee meeting on 3 May and persuaded the Councillors to approve a café at *Bellevue* with extended hours. We made a strong case that waterfront walkers would not be served by the café closing at 5pm, and as a business it would be less viable. It is important that

this State Heritage building be occupied and put to good use successfully for the long term.

The City Councillors, who unanimously supported extended hours, heaped praise upon the speakers and the Glebe Society for their commitment and passion, not only on the night but over decades of community effort.

- Neil Macindoe

## City Council will investigate restoring historic Harold Park trams

Council has unanimously agreed to investigate how the City can help restore and locate six historic trams currently housed at the former Rozelle Tram Depot on the Harold Park Paceway site.

The former Rozelle Tram Depot was built in two stages in 1904 and 1909 and used to house trams running along the Crescent and serving Balmain, and eventually Leichhardt and Drummoyne. The six trams, including the last tram to run on the original Sydney tramway system, have been vandalised and left to deteriorate since they were relocated to the former Depot in the early 1990s.

The City expects to exhibit the planning controls being developed for Harold Park, including the tram sheds, later this year. The Controls may include provisions for some trams, especially those that ran from the Rozelle Depot, to be retained on the site. The trams would need to be temporarily relocated while being refurbished.

The City Tram Association, which was involved in the original restoration of the trams, and the Sydney Tramway Museum lack the resources to transport the trams for safekeeping and restoration. The NSW Harness Racing Club is reluctant to allow the trams to be moved without documented proof of ownership. The City may be the only organisation that can work with the interested parties to resolve the matter and prevent further deterioration of these important pieces of moveable heritage

On Monday night 10 May, Council unanimously endorsed my Lord Mayor's Minute which recommended that Council investigate the options and costs associated with the restoration and relocation, and begin discussions with local

volunteers who might want to assist. Interested community members have suggested that the trams could be moved to another location for around \$30,000.

Given the unique history of the trams and their significance to the local community it is essential we take action to ensure that they are preserved.

From Clover's e-news  
14 May

## RJ Williams Lodge to close - modern replacement planned

Following unfortunate circumstances in recent weeks, Sydney City Council has imposed an order on Wesley Mission to make major structural alterations to the building in a very short space of time.

Wesley Mission has an obligation to meet Council requirements and to ensure the safety and welfare of its staff and residents. As a result Wesley Mission transferred 24 residents out of the rear wing of the building into temporary accommodation.

It has since become clear to us, however, that for the structural alterations to be safely implemented, the whole building will have to be evacuated. Further, it has been recognised that the required work, including the replacement of all balustrades throughout the centre, will cost many hundreds of thousands of dollars.

Such significant expenditure on an old building is not considered well spent, because the facility will continue to be outdated for aged care. Wesley Mission has therefore made the very difficult decision to close RJ Williams Lodge as a residential aged care facility from 31 August, 2010.

## Reussdale sold to Lilyfield family

*Reussdale* now has some very happy new owners...a family of four who recently sold in Lilyfield and will be moving in very soon.

We had a competitive auction on the front lawn with about 100+ locals in attendance. It was between three parties, the others being a family from Glebe and a gentleman from Darlinghurst. It sold under the hammer for \$3.562 million and will now be re-born as a wonderful family home.

- Mark Tooth, Belle Property



A crowd of interested locals gathered in the front garden to witness the auction. Photo: Mark Tooth

At the same time, however, I am pleased to say that an in-principle decision has been made to demolish the building and to replace it with a modern new centre providing similar services.

This decision has not been easy. However Wesley is committed to providing services for people in need, and we want to continue working in Glebe for many decades to come. We are going to be assessing the present and future needs of the community in line with Wesley Mission's own objectives and priorities, have discussions with community and government stakeholders and be in a position to make decisions over the coming months.

During the coming weeks and months we will be working closely with each of our 67 residents and their families/representatives to facilitate their smooth transfer to another suitable home. We will also be working closely with all our staff to ensure the decommissioning process occurs smoothly and positively.

From Wesley Mission press release  
15 April



# A giant step for Dr Peter

‘Neil Armstrong has set foot on the moon’, Peter Pockley’s voice reverberated across the nation that day in July 1969 when he described man’s first step on to lunar soil. It was a broadcast he pioneered, but just one of his many achievements in the science journalism world.

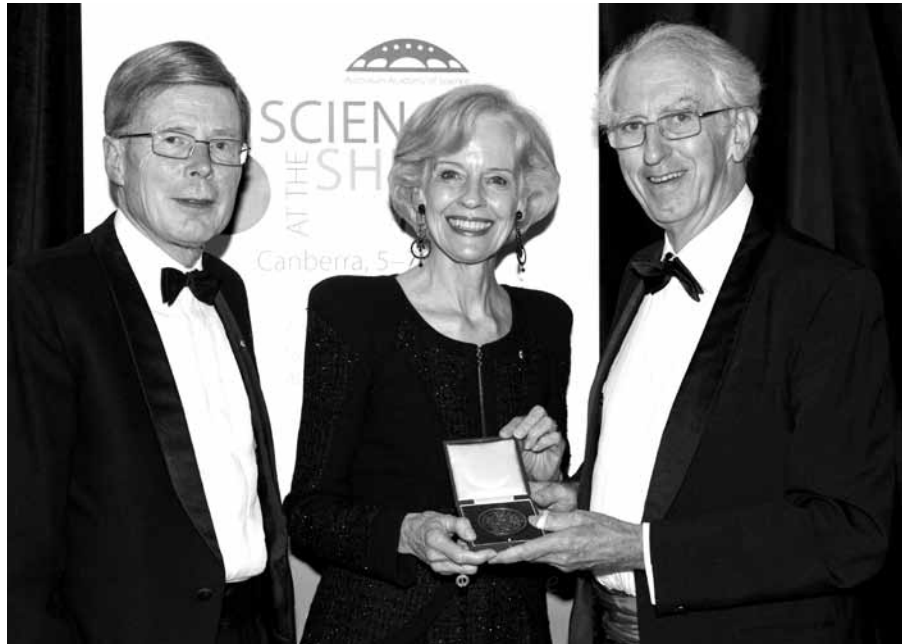
From starting Australia’s first science broadcast program, *Insight*, in 1964, Glebe resident Dr Pockley has been a pioneer of what science journalism has become, in broadcast, print, and increasingly, online.

‘I was the first scientist to be employed full time in the Australian media, specifically in the specialised area of science’, Dr Pockley admits.

‘The ABC science unit that I founded, and became the director of, is still operating today’.

And now he has the Australian Academy of Science Medal for 2010 to commemorate it.

‘With such a distinguished career, the award was well deserved and long over-



*President of Australian Academy of Science, Professor Kurt Lambeck, Governor-General Quentin Bryce and Dr Peter Pockley.  
Photo: Irene Dowdy, Australian Academy of Science*

due’, fellow Glebe resident Grahame Budd said.

The Academy Medal is awarded once every three years to those ‘who have made an outstanding contribution to sig-

nificantly advance the cause of science and technology in Australia’.

But why is it so important to advance the cause of science on air or in print?

‘We’re contributing to a better understanding of our world as broadcasters, journalists and editors’, Dr Pockley said. ‘We are assisting in getting the words of scientists themselves across’.

According to Dr Pockley ‘science is an integral part of the advancement and quality of life in a society.

‘To not have science on the air in a significant, continuing way would mean media companies like the ABC not living up to their charter of representing Australia to Australians’, Dr Pockley said.

‘There’s a tremendous demand of interest in the science programs whenever they are broadcast on television or appear in the press.

‘With major issues like genetic modification, certain areas of medical practice and climate change looming, science journalism and journalists are more important than ever.’

**Inner Western Courier  
25 May**

## The Park

Once was a stream, free flowing  
a creek, tidal,  
mangroves at the mouth,  
pneumatophores breathing with the ebb tide  
swamp beside, alluvial plain

then an infill

Historic tramsheds, brick façades, roofs rusting, interiors dangerous in their neglect  
trotters harnessed to chariots paced the track  
the all weather hockey field within the race track promised,  
but not yet in existence

Pacing will relocate,  
and then?

A park it never was, it could now be  
The promised sports arena  
Public open space, gardens, a mini-forest  
Green lungs to mitigate carbon pollution  
Tramsheds to house artisans workshops, long anticipated  
Cafes, picnic spots.

Harold Park after Childe Harold, sire of many a winner  
Hopes for a winner now, for the community  
For Gaia.

**Margaret Sheppard**

# New features for Society's website

The Glebe Society website is changing – it is now easier to keep up to date on the important issues in Glebe, and have your say about them. While the website looks familiar we think it is now more interesting and we are adding features that will make it more useful.

## Keep up-to-date on the big issues

The main change on the home page is to make it easier to find out what issues are currently concerning the Society – simply click on **Major current issues**. Not surprisingly Harold Park and Bays and developments on the foreshores are the current major issues. Click on these links and you can read the most recent news on the subject and scroll through previous items.

All items have a link at the bottom that allows you to write a comment. This is a great way for you to keep the Management Committee up to date on what members are thinking.

Items posted on the website over the past three years can be found by clicking on **Archives** which is found towards the bottom of the yellow bar on the right of your screen.

## Tell us what you think

A new feature of the site is a forum (see **Forum** in the banner across the top of the home page). We encourage members to post their views on items that are concerning them. We expect most will be about Glebe but other items that might be of interest to members are welcome. There are various subjects of discussion listed at the moment - *About Glebe, About the Glebe Society, Local Glebe Issues, Glebe Activities – events, shows, activities, festivals, sports* – but you can initiate a discussion on anything that takes your fancy. The only requirement is that you register with the forum, and don't post anything that is libellous or gratuitously offensive.

The Forum page also has the potential to enable members with common interests to swap notes.

## Don't miss the party

Also easily accessible from the home page is a list of coming events under the heading **What's on**. These may be events organised by the Glebe Society, or events that we think may be of interest to members. Members who are aware of an event that might be of interest to other members should email the details to the Webmaster.

## Membership renewal online

The time to renew your membership is fast approaching and this year you will be able to renew securely online using your credit card. The system, which uses the PayPal facility, will be similar to the one we introduced to handle event booking and payment online, but it will be structured to ensure we capture your membership data which is essential for our records. To renew your membership online look in the yellow bar on the right hand side of your screen for **The Glebe Society** and click on **Membership Renewal**.

We thank our web guru, Peter Thorogood, for making this possible.

The Management Committee is keen for members to use the website as an information resource and a means of putting and debating points of view. While there is quite a lot of information about Glebe and the Glebe Society available on the site, there are no doubt many other items that could be added. Please let the webmaster (webmaster@glebesociety.org.au) know if you have any ideas.

- Bruce Davis

## Who 'hits' our website?

While it's impossible to know exactly who logs on to the Glebe Society website and why, Peter Thorogood has produced some interesting statistics:

More people are logging on – the average number of visits to the site has increased from 8338 to 13,813 per month since July last year.

Most visits to the site were from Australia (76%). Others came from the US, Canada and New Zealand.

The record number of visits to the site in any one day was on 1 September last year (646) – if you can think of a reason, please let the webmaster know!

The number of visits peaks about mid-day.

Most people enter the site through the home page, with the events booking page running a very distant second.

The most common searches of the site were, not surprisingly, for information about Glebe or the Glebe Society. The next most common searches were Blue Wrens (4.2%), Edmund Barton (3.9%), Harold Park redevelopment (1.6%), and *Reussdale* (1.3%).

## Help make our website even better

Vicky Marquis took over from Cynthia Jones as the website coordinator more than three years ago and has led the little team that guided it though its transformation. Vicky feels that now this task has largely been accomplished it is time to move on.

The change in emphasis means the new convenor should be someone with their ear to the ground. Peter Thorogood and others already take care of the technical issues; we are looking for a new convenor who will make sure all the items of interest to members promptly appear on the website, and that its various sections are updated when necessary. Naturally the website convenor will work closely with the editor of the Society's *Bulletin*.

If you would like to try your hand, email Vicky at webmaster@glebesociety.org.au.

The Glebe Society website home page screenshot. The page has a dark header with the Glebe Society logo and navigation links: HOME, About GLEBE, NEWS, THE GLEBE SOCIETY, JOIN, BOOK AN EVENT, FORUM, CONTACT & DIRECTORIES. Below the header is a banner image of Glebe. The main content area includes a welcome message, a search bar, and sections for 'MAJOR CURRENT ISSUES' (listing Bays and Foreshores and Harold Park Redevelopment), 'JOIN THE DISCUSSION' (with a 'Click here to join in the discussion Forum' button), and 'NEWS' (listing campaigns for Harold Park, Bays Precinct, and Wentworth Park). A sidebar on the right contains a 'Visit Glebe' menu and 'Major Issues'.

# Who lived in your street?

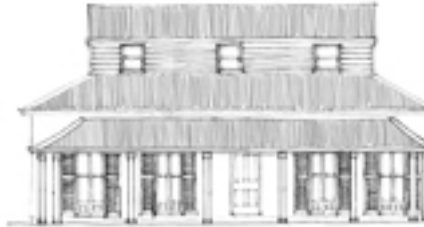
## Montrose, 20 Glebe Point Road

*Restoration of this building, which dates from 1869, won the 2010 EnergyAustralia National Trust Conservation Built Heritage for a Project under \$1 Million: Individuals Award. This prompted Lyn Collingwood to research the house's history.*

Two years ago Dr Hunter Tuon decided to remove additions tacked on at the front in the 1920s and, in collaboration with his brother architect Austin Tuon, to restore the building. Much of the original fabric is intact, including the joinery and stables. The occupancy of Montrose Medical Practice (Dr Tuon in partnership with Dr Andrew Chen) continues *Montrose's* 122-plus-year connection with the medical profession.

The first physician recorded as living at *Montrose* was Dr Arthur Annesley West who rented the property in 1878. A younger brother Dr William Augustus West practised there from 1898 until his death in 1905. William's successor until 1915 was Dr Stewart Arthur Smith, for a time in partnership with Dr John William Van Rees Hoets. In 1922 Hoets went into partnership with Dr Theodore Kenneth Potts (who had taken over Dr Rudolph Bohrsmann's rooms at 36 Glebe Road) and extended the consulting and waiting rooms on its Glebe Point Road frontage. Dr Keith Faulkner worked for a time with Potts. *Montrose* was then occupied by the Potts family of doctors until 1996 when practitioners of alternative medicine moved in.

Health care professionals were close by. Chemist James Dole ('prescriptions dispensed with the purest drugs which money can procure') ran his business from the original Glebe Post Office from ca 1858 until 1883. The Glebe Branch of the United Friendly Societies' Dispensary and Medical Institute, its resident dispenser John Hale, operated at 12 Glebe Road before its own two-storey building (a six-room dwelling plus dispensary and waiting room) was opened in January 1909 at number 33 across the road. Here patients, bringing their own bottles and jars, were given ointments and gargles and the like, plus leeches, cod liver oil, lime water, camel hair brushes, poppy heads and chamomile flowers. Dentist William Scott Kemmis had his surgery at *Wentworth* 24 Glebe Road from 1910 until 1914. Skin specialist Walter H Cooper was at number 22 from 1912 until 1920.



Architect's sketch of the original building, courtesy Dr Tuon.

'Montrose', a popular 19<sup>th</sup>-century name for ships and dwellings, probably commemorated a Scottish connection. Other local *Montrose* houses existed in Pyrmont, Balmain, Paddington, St Leonards, Randwick and Marrickville. Glebe's *Montrose* was built in 1868-9 by George Wigram Allen, one of his many investment properties on land leased long-term from the Church of England, but there is no evidence that he christened the building. By January 1876 it had been given its current name. In October 1878 the property was sold as part of the estate of Elizabeth Shelley (1782-1878), widow of William Shelley (1774-1815) a missionary and friend of Samuel Marsden. On land with a frontage of 60 feet and depth of 120 feet, the 'commodious family residence' (six rooms plus hall on the ground floor and five bedrooms on the first with kitchen, laundry, servant's room, cellar, stabling for two horses and coach-house at the rear) was bought for £840 by Henry Goddard who lived there from 1880 until 1898.

Who lived at *Montrose* immediately after it was built is not confirmed. There is some evidence that it may have been first occupied by a society or organisation and that James Robinson was there in 1871. By 1875 Edward Goddard (ca 1818-85) and his wife Jane Janson née Kerby (ca 1823-90) had moved in, probably with their youngest surviving children, 20-year-twins Ada Grace (restorers working on *Montrose* noted 'Ada 5/11/75' scratched onto a window pane) and Arthur James Elliott, and teenagers Percy and Stanley. In December 1876 Ada married Henry Herbert Hopkins and moved to Maitland. In September that year Edward's brother-

in-law Edmund Uther Kerby had died at *Montrose*. The house was also the death place of Edward's eight-year-old granddaughter Lucy May Horsey in January 1877. In March the household's water spaniel pup went missing.

After leaving *Montrose* Edward lived at 8 Arundel Terrace before moving to St Leonards where he died on 25 July 1885. His wife also died at St Leonards, on 18 February 1890. Many members of the Goddard/Kerby extended families were buried in the churchyard of St Thomas' Anglican Church North Sydney.

Before moving into *Montrose* the Goddards had lived at a number of addresses: Pyrmont, Balmain, Surry Hills, South Head Road, Stanley Street Woolloomooloo, St Leonards; and Edward had had a variety of occupations: agent, wine merchant, draper, warehouseman. Of their 15 children born in the years 1843-62 the career of fourth born William Cornelius (1847-1920) gives an idea of their lifestyle. Educated at 'Mr Castle's private school' and at Sydney Grammar, William worked in banking, founded the insurance agency W C Goddard & Co. and was a board member of the Australian Gas Light Company and the Permanent Trustee Company of NSW. When he moved to the North Shore he had to row from Lavender Bay to Circular Quay and pushed for a ferry service. He was a founding director of Sydney Ferries Ltd, in which capacity he became involved in the notorious case of George Dean, a ferry master charged in 1895 with poisoning his wife. William played with the Albert Cricket Club and was keen on tennis and golf. Mourners at his funeral were 'representative of the commercial and shipping life of the city'.

Henry Goddard (ca 1833-1901) was a storekeeper, with a produce agency in Sussex Street, at 45 Athlone Place before moving to St Johns Road and then to *Montrose*. He does not seem to have been directly related to Edward Goddard. Henry died at home 35 Pyrmont Bridge Road on 23 July 1901, survived

by his wife Mary Ann, née Carey (1841-1915) and his surviving children Benjamin, Albert, Arthur, Louisa, Ada, Phoebe and Florrie. Charles, Archibald and William had died, the last two as children.

Arthur Annesley West (1848-85) was born at Ardenode in County Kildare, the second son of George White West, a barrister and JP. After graduating in medicine from Trinity College Dublin in 1869, armed with a swag of testimonials he arrived in Sydney aboard the *Strathnaver* on 4 March 1871 and went up to Newcastle to 'have a look about'. In 1872 he married Mary Elizabeth Parker in Sydney and established a practice at Raymond Terrace where Elizabeth Charlotte was born in 1873. In 1877 Arthur returned to Ireland to undertake further study. While overseas a second child George White West (died 1939) was born. By May 1878 (when he advertised for a 'good plain cook and laundress for a small family') Arthur was in practice at *Montrose*. In 1880 he moved to *Derby House*, 36 Glebe Road, where his younger brother William joined him as assistant physician in 1882. The births of Arthur's younger children William Parker, Emily Parker and Arthur Annesley jnr were registered in Glebe in 1878, 1879 and 1883 respectively. At the time of his death the family home was *Ardenode* at Ermington on the Parramatta River.

Arthur Annesley was an active member of the NSW Board of Health and honorary physician with Sydney Hospital and the Hospital for Sick Children on the corner of Wigram and Glebe Roads. In early 1884 he resigned the last position (with fellow honoraries Alfred Roberts, Thomas Pickburn and W H Goode), ostensibly because of the pressure of private practice, but in reality because the Ladies' Committee blocked the doctors' recommendations for better management of the institution.

On his way home from work on 28 June 1885 Arthur suffered a haemorrhage and died, aged 37, attended by Drs Rowling and Goode. His tombstone in Ryde Cemetery was inscribed with his qualifications: MB TCD LMCLHD MDM Ch TCD LRCSI FRCSI.

His widow died aged 64 on 5 July 1911 when living at Victoria Street Lewisham. She was buried in the CE section of Gore Hill Cemetery

After Arthur's death William took over his practice, moving to *Montrose* in 1898. Dr Rudolph Bohrsmann then set up rooms in *Derby House*.

William Augustus West (1859-1905) was born on 24 November 1859, George White West's fourth son. Like his brother he graduated in medicine (LRCSI 1879, LKQCP 1880, LMKQCP 1880), travelled to Australia, then returned to Ireland for further study. He married Amy Georgina Taylor (1860-1934) at Uralla in 1886. Gwendoline Lind Annesley was born the same year, Arthur Lind Annesley in 1891 (died 1947), and a baby died at birth in 1889.

A Glebe alderman, William was keen on horse racing and played bowls on the green in Victoria Park. Feeling unwell he went to Medlow Bath to recuperate but died six weeks later of double pneumonia at his home, *Stoneleigh*, Liverpool Road Summer Hill on 11 December 1905, attended by doctors Purser and Hinder. He was buried in the CE section at Rookwood. William's widow outlived him by 29 years.

The next medical practitioner at *Montrose* was one of the mourners at William's funeral: Stewart Arthur Smith (1881-1961) who graduated MB, ChM from the University of Sydney in 1903. Stewart was born in Grafton, one of seven children of Stephen Sheldrick Smith, headmaster of Grafton Public School. Two of his brothers rose to prominence: Sir Grafton Elliott Smith, an Egyptologist, and Stephen Henry Smith, NSW Director of Education.

Dr Smith in 1938 became the first director of post-graduate medicine at Sydney University, Chair of the Australian Rheumatism Council 1949-59, President of the Royal Australasian College of Physicians, and a committee member of the National Heart Foundation. At the time he practised in Glebe he lectured in anatomy, and in 1918 published a formal description of the prehistoric Talgai skull, unearthed at Warwick. A racehorse owner, Smith died on 5 February 1961, survived by Muriel née Pitt and their three daughters.

In 1915 John William Van Rees Hoets (1885-1961) took over *Montrose*. Hoets was born in Boorowa, NSW, the son of Alton Kingsley Hoets, a country practitioner. He was educated in Goulburn and at The King's School before graduating MB 1908 and ChM 1909



Dr Hoets, who built extensions to the front of *Montrose* in the early 1920s

from Sydney University. He was a keen cricketer and played university rugby union interstate and in New Zealand. Later in life he took up golf. At the time of his father's death in 1908 John was living with his mother Ellen and sister Ethel at *Oban* 27 Boyce Street Glebe.

Hoets' first practice was at 20 Glebe Road, in partnership with Stewart Smith and later with Theo Potts. He was for a short time honorary gynaecologist at South Sydney Hospital. After moving to Bellevue Hill in 1920 he specialised in orthopaedic surgery, practising at Lewisham, Sydney, Western Suburbs, Prince Henry and Concord Military hospitals. He had rooms in Macquarie Street and was president of the Australian Orthopaedic Association 1947-9. He died in the Scottish Hospital on 17 March 1961, survived by Blanche Alice Ruth née Gaden whom he had married in 1913, a son and a daughter.

Theodore Kenneth Potts (1889-1957) was born at Dungog, the eldest son of a Methodist minister. In 1912, in his fourth year of study at Sydney University, he became the medical school's first student demonstrator and one of its most brilliant dissectors. (His dissections are still in the J T Wilson Museum.)

Theo graduated MB 1915 Ch M 1918, was RMO at RPA 1914-16, honorary surgeon at South Sydney Women's Hospital, honorary demonstrator in anatomy in Sydney University's Medi-

Continued on next page...



... continued from previous page

cal School and a Member of the British Medical Association. His practice was at *Montrose* where he was Lodge doctor for the Druids. He drove a horse-drawn buggy to visit patients. Dr Potts lived at Parsley Bay before moving to 6 Penkivil Street Bondi where he died on 18 August 1957, survived by his widow Violet Mary née Canning (whom he had married at Canowindra in 1917) and sons Ken, Ian and David.

Theodore Kenneth (Ken) Potts was born on 12 August 1919, graduated MB BS in 1944, joined his father's practice and took it over after his death. In 1978 he bought *Montrose* from the Church of England. Ken died in hospital on 16 April 1988. His son Theodore David inherited *Montrose* and practised there before its occupancy from 1996 until 2006 by the Australasian College of Natural Therapies. In 2007 the third Dr

Potts was struck off the medical register for two years.

Patriarch of the Potts family was Manchester-born Thomas Frederick Potts (1862-1934) who arrived in Australia in 1883. He trained as a Methodist minister, married in 1889 and lived in Dungog, Gunning, Lismore, Inverell, Katoomba, Manly, Waverley and Gordon before moving into 81 Arundel Street Glebe. From 1922-33 he was principal of MLC Burwood which, with 'a great gift of finance', he expanded. His wife and daughters Ellen and Thecla worked there also, the latter in charge of boarders. At the time of his death, on 20 January 1934 in a motor vehicle accident, he was living at Woollahra Point. He was survived by Esther Ann née Bright (1863-1936), their two daughters and four sons, including Keith who had a medical practice in Stanthorpe, Queensland.

- Lyn Collingwood

## Sources

Anatomy Dept Sydney University *Slice of Life* handbook 2008

*Australasian Medical Gazette* July 1885, 20 December 1905

Cecil W Darley papers 1865-93

Cemetery records

Electoral rolls

Hospital for Sick Children *Annual Report* 1883-4

MLC Burwood *The Excelsior* June 1933, June 1934

*Medical, dental and pharmaceutical directory* 1903-4

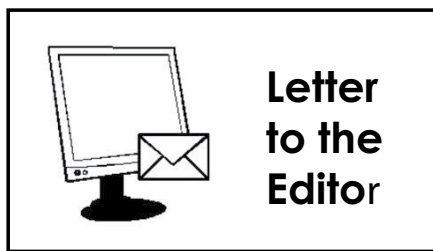
NSW registry of births, deaths, marriages

Sands *Directories*

*Sydney Morning Herald*

Sydney United Friendly Societies' Dispensary and Medical Institute *Meetings 1903-9*

University of Sydney Alumni (online)



Dear Editor,

I loved reading the story about Lew Hoad in the last edition of the *Bulletin* as I grew up in the country in the 1950s and tennis was all the rage. I particularly related to the photo of the Hoad family sitting around the radio listening to Lew's progress at Wimbledon as I remember doing this too with family and mates, particularly the Davis Cup matches. We were privileged on one occasion to watch Lew and Ken Rosewall playing a demonstration match on the grass courts in Maitland.

However, I must correct the first paragraph in the report as the original plaque was not stolen\*. I read a letter in the *Sydney Morning Herald* from Jim Orman, who lives in Allen Street, lamenting that the plaque had been replaced, after the refurbishment of the park, so low to the ground that to read it was almost impossible. As a result I decided to see for myself and noticed that it seemed poorly attached. When I used my finger nail to test it, it simply fell to the ground. I immediately took it

to the Town Hall and passed it in whereupon it was placed in safe keeping to become part of the City of Sydney new signage for parks. I presume it is still there. One of the officers working there typed out the wording and forwarded a copy to me.

I have been pursuing its replacement in the park ever since through Glebe Society people and Nick Hespe at the Town Hall.

I am pleased to see that a new sign has been placed in the Lew Hoad Park with a history of his achievements. However, the information relating to Lew is on the back of the sign facing the park where very few people, if any, would read it. In my opinion it should be facing the street, like the original, so that people passing by and waiting for the bus would be more aware of his significance to Glebe and Australian tennis. Maybe the original could be attached to the post. I have already raised this matter with Council but would be interested to hear what your members think through Nick Hespe at the Town Hall.

**David Lawrence**  
**Secretary Annandale Precinct**  
**Community Native Nursery Volunteer**

\* I took information re the theft from the local paper.

- Lyn Collingwood

## Local MP opposes NYE rock concert

Members who live near the Point will be pleased to hear that our local Member of State Parliament, Verity Firth, opposes plans for a New Year's Eve rock concert at White Bay. 'I was unaware of any plans for a concert at White Bay until I read about it in the media,' she said.

'Like local residents, I strongly oppose these plans. Anyone living in the area would know that a concert of that size would have an unacceptable impact on the local community.'

Verity noted that the venue suggested is immediately adjacent to residential homes, and that the noise pollution and traffic volume would have a huge impact.

(She could have added that sound travels very well over water and it is not only residents of the immediate area who will be affected.)

'Any event of this size requires careful planning and consultation and it's critical that the local community is able to express their views.'

She encouraged residents to sign an online petition at [www.verityfirth.com](http://www.verityfirth.com), or contact her electorate office on 9660 7586.



# Blue Wrens

The Blue Wren Group, a section of the Glebe Society's Environment Sub-committee, has prepared the following draft policy statement, and would welcome comment and feedback from members.

Please send comments to Tessa Copland at [tessa.copland.bigpond.com](mailto:tessa.copland.bigpond.com) or c/o PO Box 100, Glebe 2037.

## Draft Blue Wrens Policy

1. The Group will work to value, retain and enhance biodiversity in Glebe and Forest Lodge, and its bays and foreshores, for current and future generations.
2. The Group will foster the education of residents, businesses and other parties leading to an increased awareness of the value of native plants and animals in our suburb.
3. The Group will liaise (including lobbying, and the provision of advice and feed-back) with the City of Sydney and other organisations to retain and enhance biodiversity in our suburb.
4. By organising planting days and other events, the Group will actively promote the enhancement of biodiversity in our suburbs' parks, school grounds, light rail corridor, and private gardens. Of special interest will be the density structure and type of plantings needed to ensure the provision of habitat for small birds.
5. The Group will promote local bushcare volunteer organisations, who support the continued establishment and maintenance of biodiversity in our suburbs' parks and other open spaces.
6. The Group endorses the recommendations of the 2008 report entitled *Superb Fairy-Wren Habitat in Glebe and Forest Lodge - a community based conservation project* and will work towards their implementation.

- Andrew Wood

## Tree planting

Plans are being made for another tree planting day at Paddy Gray Reserve on Sunday 1 August.

See next month's *Bulletin*.

# Coming Glebe events

## Players in the Pub

Here is the program for the next few months for the popular moved readings at the Toxteth Hotel. Presented by members and friends of Sydney's New Theatre, these are not static readings but theatrical presentations, using minimal props and furniture.

**15 June, *Simply Absurd!*  
directed by Lyn Collingwood**

An early piece from the Absurd Movement. In a world without meaning life can still be very funny.

**27 July, *Bloopers*, a new play by Ron Elisha, directed by Susannah Thompson**

Ron, Melbourne GP and author of *In Duty Bound*, *Einstein*, *The Goldberg Variations* and *Wrongful Life*, is flying up for the occasion.

**10 August, *Maria Marten or The Murder in the Red Barn***, with live music accompaniment. An 1828 melodrama based on a real life murder. After William Corder was hanged, the rope sold for £1 an inch.

**7 September, *The Trials of Ann Rumsby* by Brian Hungerford.**

A play for History Week based on events in Parramatta in 1822. Dramatis personae include the Reverend Samuel Marsden.

**Tuesdays at 7 pm** in the upstairs Media Room, Toxteth Hotel, 345 Glebe Point Road. (enter via Ferry Road stairs)

**Admission is free.** Two main meals for one on Tuesdays - orders from 5.30pm.

- Lyn Collingwood

## Monster book sale

Glebe Library and the Glebe Chamber of Commerce are pleased to announce the annual Monster Book Sale, on **Saturday 5 June, 9am to 4pm** at Benledi, 186 Glebe Point Road, Glebe.

Donations of books in good condition can be dropped off at 186 Glebe Point Road on Friday 4 June between 9am and midday.

Come along, rain or shine, and bring your friends. All proceeds will go back to the community.

The Chamber of Commerce would welcome help from Glebe Society members on the day.

Further information: 9552 1546

## Membership renewals 2010/11

If you are a member of the Glebe Society who joined before 1 January 2010, your membership is now due for renewal.

A renewal form enclosed with this *Bulletin*. You may use this form to renew your membership by mail, or you can pay via the Society's web site ([www.glebesociety.org.au](http://www.glebesociety.org.au)) using our PayPal facility. See page 5 for instructions.

- Bruce Davis  
Treasurer

## Future development of the Bays Precinct

**Public meeting is planned for late June**

Community groups that participated in the Bays Precinct Community Reference Group (CRG) established by the former Planning Minister Kristina Keneally are convening a joint public meeting to:

- brief their communities about the outcomes of the CRG process;
- explore ways to use the CRG outcomes to influence current unintegrated developments in White, Blackwattle and Rozelle Bays; and
- get Government action on key CRG recommendations.

The date and time will be announced as soon as possible. The target is to hold the meeting in late June. The likely venue is the Bistro in Wentworth Park grandstand, but this is also to be confirmed.

# News and Notes

## Thirsty Thursdays

Members and friends are invited to meet in Glebe on the first Thursday of each month at 7pm, to eat and talk with other people who live in Glebe. We visit a different restaurant each month, varying cuisines. Put these dates in your diary now.

On **Thursday 3 June** we will try the Mexican cuisine at the *Flying Fajita Sistas*, 65 Glebe Point Road.

On **Thursday 1 July** we will visit *Deus ex Machina*, 98-104 Parramatta Road Camperdown.

And on **Thursday 5 August** we can share paella at *Spanish Tapas*, 26 Glebe Point Road.

Please email me or ring me on 9660 7066 by the Tuesday before the dinner to let me know if you are coming, and if you are likely to be late.

- Edwina Doe

## Welcome to new members

The following people were accepted as members of the Glebe Society at the May Management Committee meeting:

- Sister Marion Firth
- John Gilroy
- Gay Radd
- Mark Stapleton

We look forward to seeing them at future Glebe Society functions.

## Membership Renewals 2010/11

If you are a member of the Glebe Society who joined before 1 January 2010, your membership is now due for renewal.

Please see the enclosed renewal form and page 5 of this *Bulletin*.

## Australia Western Sahara Association

Update on Western Sahara, Sunday 6 June 3-5 pm, 1 Bayville Street Balmain

Cr Jamie Parker, Mayor of Leichhardt, will give an illustrated talk about his recent trip to the Saharawi refugee camps in south-west Algeria and also about the international conference of local government representatives in Algiers that he attended prior to visiting the refugee camps.

Kamal Fadel, Polisario representative to Australia, will speak about recent political developments in the Saharawi struggle for independence.

Afternoon tea served (drinks available)

RSVP by 1 June 2010

Email: Barbara (barbjg@tpg.com.au) or Lesley (lesleyosborne@bigpond.com) or phone 9810 5372.

For the latest news about Western Sahara visit [www.awsa.org.au](http://www.awsa.org.au).

## Salsa Café

The Latin American Dance Academy is holding a Salsa Café on Saturday 5 June, a night of live music and dancing in a friendly, community atmosphere.

Time: 7.30 for dance lesson, 8pm – 12midnight for Salsa Café

Venue: Glebe Town Hall, 160 St Johns Road, Glebe

Cost: \$10 which includes snacks, coffee/tea

Age: 18+ .

This event is supported by the City of Sydney as a joint venture with L.A.D.A. to promote health benefits and community building through dance.

Lara (L.A.D.A. teacher)

## No Mitchell Street Fair

The Fair, planned for Saturday 22 May, was cancelled at the last minute due to heavy rain. We commiserate with all concerned.

## Bulletins by email

If you would like to receive your *Bulletin* by email instead of snail mail, please email [editor@glebesociety.org.au](mailto:editor@glebesociety.org.au)

## Our local Member of Parliament

State Member for Balmain, Hon. Verity Firth MP.

Office address: 112a Glebe Point Road, Glebe 2037.

Senior Electorate Officer: ph 9660 7586, fax 9660 6112, email [balmain@parliament.nsw.gov.au](mailto:balmain@parliament.nsw.gov.au)

## City of Sydney Councillors

Lord Mayor: Clover Moore MP

### Councillors:

Phillip Black

Meredith Burgmann

Irene Doutney

Chris Harris

Marcelle Hoff

Robert Kok

Shayne Mallard

John McInerney

Di Tornai

For enquiries: Please contact the City of Sydney on 9265 9333.



Forest Lodge  
Public School

Home of The Glebe

Society Archives



Phone 9660 3530

# For your diary ...

- Thursday 3 June, 7pm** - Thirsty Thursday - *The Flying Fajita Sistas*, 65 Glebe Point Road. See Page 10.
- Saturday 5 June, 9am – 4pm** – Monster Book Sale, Benledi. Donate books on Friday 4 June.
- Wednesday 9 June, 7.30pm** – Management Committee Meeting – The Old Fire Station, 115 Mitchell Street.
- Tuesday 15 June, 7pm** - Players in the Pub – Toxteth Hotel. See Page 9.
- Thursday 1 July, 7pm** - Thirsty Thursday – *Deus ex Machina*, 98-104 Parramatta Road. See Page 10.
- Wednesday 14 July, 7.30pm** – Management Committee Meeting – The Old Fire Station, 115 Mitchell Street.
- Tuesday 27 July, 7pm** - Players in the Pub – Toxteth Hotel. See Page 9.
- Thursday 5 August, 7pm** - Thirsty Thursday – *Spanish Tapas*, 26 Glebe Point Road. See Page 10.
- Wednesday 11 August, 7.30pm** – Management Committee Meeting – The Old Fire Station, 115 Mitchell Street.
- Sunday 29 August** - Glebe Society Annual General Meeting.
- Sunday 12 September** - Wentworth Park Community Games.

## Contacting The Glebe Society

### Mail

All correspondence should be addressed to:

The Glebe Society Inc  
PO Box 100, Glebe NSW 2037

### Website

The Society has a growing Website ([www.glebesociety.org.au](http://www.glebesociety.org.au)) for the information of members and anyone with an interest in Glebe. The Website will only flourish if members use the site. Send contributions or comments to [webmaster@glebesociety.org.au](mailto:webmaster@glebesociety.org.au)

### The Bulletin

We are glad to publish letters or articles on any matters of interest to Glebe, any topic raised in the *Bulletin*, or any issues relating to the Glebe Society, within the Guidelines published on our website. Write to the address above or email [editor@glebesociety.org.au](mailto:editor@glebesociety.org.au)

### Disclaimer

Views expressed in this *Bulletin* are not necessarily those of The Glebe Society Inc.

### Bulletin deadline

The next edition of the *Bulletin* will be published at the end of June. The deadline for contributions is Wednesday 16 June.

## The Glebe Society Inc Established 1969

### Management Committee:

President	Lesley Lynch	9660 5084
Vice-president	Bruce Davis	9660 7873
Immediate Past President	Jan Macindoe	9660 0208
Secretary	tba	tba
Treasurer	Bruce Davis	9660 7873

### Committee Members:

Andrew Craig 9566 1746	Dorothy Davis 9660 7873
Carole Herriman 9571 9092	Liz Simpson-Booker 9518 6186

### Sub-committee Convenors:

*All sub-committee convenors are ex-officio members of the Management Committee*

Arts, Culture and Media	Sue Ingram	9692 8534
Bays and Foreshores	Tony Larkum	9660 7030
Community Development	Robyn Kemmis	9692 9440
The Environment	Jan Macindoe	9660 0208
Heritage	tba	tba
Membership	Cheryl & Bryan Herden	9660 7371
Planning	Neil Macindoe	9660 0208
Transport, & Traffic	Andrew Craig	9566 1746

### Other contacts:

Archivist	Lyn Milton	9660 7930
Blackwattle Cove Coalition (BCC)	Bruce Davis	9669 7873
Blue Wrens (Acting Convenor)	Tessa Copland	9660 0446
Bulletin Editor	Edwina Doe	9660 7066
Event Coordination	Dorothy Davis	9660 7873
History of Glebe	Max Solling	9660 1160
History of the Glebe Society	Jeanette Knox	9660 7781
Liaison with CoGG	Bruce Davis	9660 7873
Liaison with FLAG	Robyn Kemmis	9692 9440
Website	Vicky Marquis	9552 2592

# In this issue

- Glebe leads the charge – page 1
- Earth v Sky approved – page 1
- Rozelle Rocket starts– page 2
- Society Website – page 5
- Who lived in your street – page 6
- Glebe events – page 9

The **GLEBE**  
PO Box 100



**SOCIETY Inc**  
Glebe 2037

*Postage  
paid*

**Membership  
renewal form  
enclosed**

## **Membership of the Glebe Society**

<b>Individual</b> member	\$45
<b>Joint</b> (2 people, one address)	\$55
<b>Household</b> (more than 2 adults and/or children, one address)	\$60
<b>Concession</b> (student or pensioner)	\$20
<b>Institution or corporate</b>	\$110

Download a membership form from our website ([www.glebesociety.org.au](http://www.glebesociety.org.au), click on Join), write to the Secretary at PO Box 100, Glebe, 2037, or email [secretary@glebesociety.org.au](mailto:secretary@glebesociety.org.au).

If you have a matter that you would like to discuss with the Management Committee, please contact the Secretary.

## **Community Contacts**

**Manager-Neighbourhood Services Centre:** Glebe, Forest Lodge, Camperdown, Ultimo & Pyrmont: Nick Hespe.  
Email: [nhespe@cityofsydney.nsw.gov.au](mailto:nhespe@cityofsydney.nsw.gov.au)  
Glebe Town Hall Office: 9298 3187, 9am-5pm Mon- Fri.

**Sydney City Council Customer Service**  
Telephone (24 hours): 9265 9333  
email: [council@cityofsydney.nsw.gov.au](mailto:council@cityofsydney.nsw.gov.au)  
website: [www.cityofsydney.nsw.gov.au](http://www.cityofsydney.nsw.gov.au)

**Dumped Shopping trolleys:** Trolley Tracker 1800 641 497

**Waterway Garbage:** NSW Maritime response - 9563 8592