



Glebe Society Bulletin

ISSN 1836-599X

No.3 of 2013 (May 2013)

'A Cynical Betrayal of our Community': State government Planning White Paper

The long-awaited NSW Government Planning White Paper was released on Tuesday, 16 April. The Better Planning Network response, which we believe appropriate, is reproduced below. The Paper is on exhibition for comment for just over two months, until 28 June. During this period the Society will develop a strategy for letting people in Glebe and surrounding areas know about the proposed changes, and suggest and organise ways in which they can register their concerns and opposition to their disenfranchisement on development issues. This will be in addition to the Statewide and media campaign the Better Planning Network continues to run so effectively.

Neil Macindoe

Upcoming Glebe Society Events

Friday 10 May, 6.30pm – Hear about The Glebe Society's dramatic early days. See flyer for details.

Saturday 1 June, 12 midday – Discover Chippendale's thriving art galleries. See flyer for details.



Spot the Glebe Society banner! Alison McKeown holds a yellow Glebe Society banner at the Better Planning Network rally, 28 March. In front, Corinne Fisher, BPN, hands a petition to Mr Jamie Parker, MP (Image: Better Planning Network)

BPN Press Release

“The NSW Government’s planning White Paper and Draft Legislation is a cynical betrayal of every promise made to the community,” said Better Planning Network’s Corinne Fisher.

“The Government is trumpeting its push for rapid development approvals but speed comes at the cost of community consultation. So much for assurances

that community will be at the heart of the planning system,” Ms Fisher said.

The White Paper has at its core the ability of developers, small and large, to achieve approval for most developments in a rapid time frame. The onus will be on decision makers to approve complying developments within ten days and code assessable developments within 25 days. In neither case will neighbours or the local community have a right or opportunity to comment.

“Code Assessable development is not benign or necessarily low impact,” said Ms Fisher. “It includes residential flat buildings in town centres, new commercial buildings, mixed use buildings and subdivisions with twenty or fewer villas or town houses.

These developments can have a major impact on a neighbourhood or small town centre. The community should have the right to comment and to negotiate for the best possible outcome in such cases.”

“The Better Planning Network is deeply disappointed in the State Government. Barry O’Farrell’s election promise to: *give planning powers back to the people* (Contract with NSW, March 2011) has proven to be a cynical ploy. This planning system is a developer’s dream.”

Continued on next page ...

Ms Fisher said that the community has been almost entirely cut out of the planning process at the local level. "The Government hopes that within five years 80% of development will be complying or code assessable. The rest will be merit assessed developments, including the really big developments that are determined by the Planning Assessment Commission or taken into the Minister as State Significant."

"This is the first major overhaul of the planning system for thirty years," said Ms Fisher. "It is a disaster for communities all over NSW."

The White Paper will be on public exhibition until June 28th 2013 despite communities asking for a

Interested in the fate of the Johnstons Creek Parklands? Attend Council's drop-in session on Saturday 4 May.

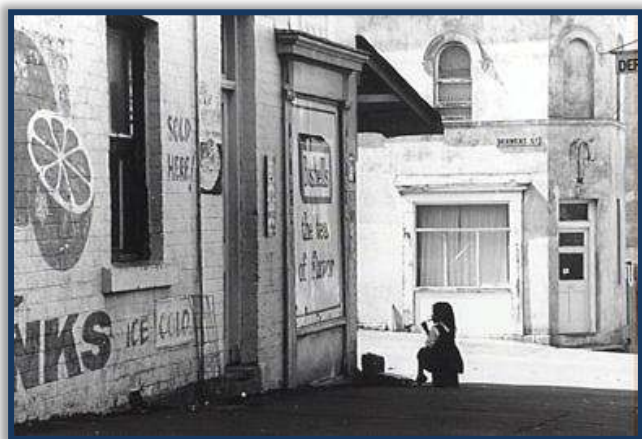
The City of Sydney is creating a long-term plan for Johnstons Creek Parklands that will link existing Glebe foreshore parks with future open space at The Crescent Annandale, the Hill near the Federal Park lightrail station and the new parklands in Harold Park. Council is calling for feedback on the draft Masterplan. A community drop-in session will take place on Saturday 4 May from 10am - 2pm at Federal Park and Bicentennial Park. Feedback can also be given via the Council website and in writing. For information about the Masterplan, go to <http://sydneyoursay.com.au/johnstons-creek-parklands>. The draft plan will be on public exhibition until 17 May 2013.

minimum consultation period of 6 months, Ms Fisher said. 'Community comments on the Green Paper have been largely ignored in the White Paper. So how does Government expect us to believe that communities will be at the centre of the NSW Planning system?'

GLEBE HERITAGE AND HISTORY

New Riches from Website History Pages

The Glebe Society website entries for Glebe History have been re-written and extended, and published with a new look. From the Glebe Society front page, go to the 'About Glebe' tab, select 'History and Heritage' and then look at 'Glebe's Social History' and 'People in Glebe's History'.



Glebe street scene, possibly Derwent St and Mitchell St, year unknown (Image: City of Sydney Archives)

We have prepared the new content from previous material on the website and other sources, including Bulletin articles, Max Solling's book

Grandeur and Grit and the *Australian Dictionary of Biography*. Articles about people in Glebe's history have been made consistent in style, with an introductory outline of the person's biography and the main part of the article examining their Glebe connection. More details about their career and importance can be found through the links under 'More information'. The entries for Glebe's social history are edited from Bulletin articles or talks, especially from the *Glebe Voices* events.

These articles are illustrated with photographs largely sourced from the City of Sydney ArchivePix site, or the Library of NSW photograph collection. Searching for appropriate illustrations was a very pleasant part of the revision task, as these two collections contain some very beautiful and revealing photos of old Glebe.

Webmaster, Peter Thorogood, has created the new look for these pages, and taken the opportunity to redesign the page on Glebe's heritage buildings in the same style.

Jan Macindoe and Liz Simpson-Booker

Welcome to new members

- ✓ John Lagerlow & Stella Farmer
- ✓ Sophia Tzannes & Rob Worsley

PRESIDENT'S PAGE



John Gray at the Glebe Society Strategy Day (Image: Virginia Simpson-Young)

At a [Workshop](#) on April 7 members and guests considered their vision for Glebe 2019 and commenced the process of developing the Glebe Society's Strategic Plan 2013-2019. Over time we have reviewed strategic actions yearly so we have a pretty good idea of our core business. The workshop invited us to think beyond what we do to what we should do, without ever devaluing what we do. This is a tricky path but the political and social context of Glebe will change and we need to develop strategy and capability for changes. Right now we are analysing data from the workshop and preparing a discussion paper. As soon as I can, I will load it to our website for your contributions.

The Government has finally released components of the [Bays Precinct Taskforce Report](#). I expect that issues around the 80 hectares of public land within Glebe Island, White Bay, White Bay Power Station, Rozelle Bay, Rozelle Rail Yards and Blackwattle Bay (including Sydney Fish Market) will be the most significant issues affecting the amenity of Glebe for the next decade and beyond. The Government's

Wai Sing ... ? Members have doubtless passed this sign countless times whilst travelling up and down Glebe Point Rd. The faded, but still legible, painted sign advertising "Wai Sing" is on the side of No.26 Glebe Point Rd. Does anyone remember Wai Sing's establishment or know the story?
Liz Simpson-Booker

response not only excludes the central tenet of public good as a planning principle for foreshore public land but also excludes any community representatives in its implementation committee. We will need to work energetically in alliance and network with community groups and government agencies to be heard.

One of those allies is the [Better Planning Network](#). This remarkable entity was formed in August last year to ensure that communities' voices were effectively heard during discussion on proposed changes to planning laws. Given the noise that developers make and the lessening role allowed by State governments to local decision making I reckon it will continue well beyond that issue.

Last month I reminded you of the disgrace of Glebe, the undeveloped Housing NSW site at Cowper St. This month I can tell you that a Development Application has been lodged, which is substantially the same as that proposed in 2011, to which the Glebe Society objected.

I can also tell you that there is a proposal to rezone 87 Bay St from commercial to commercial residential mix. This site is immediately to the North of the Cowper St site. The area of either is large. The area of both is huge.
John Gray

Does the Glebe Society have your email address?

Each month a brief email is sent to all members with breaking news about issues that are of interest to members. It includes items that arrived too late for the previous Bulletin, advance notice of coming events, as well as updated information on important issues that the Glebe Society is working on. It also includes links to the Minutes of the most recent monthly meeting of the Management Committee, and the latest colour edition of the Bulletin. If we don't have your email address, send an email to webmaster@glebesociety.org.au



PLANNING MATTERS

Completion of Foreshore Walk

A development application is currently on exhibition for the completion of the Foreshore Walk as far as Bridge Rd. Stage 5 of the Walk is mainly along the edge of the Blackwattle Secondary College, so naturally there has had to be a lot of consultation with the school. The Walk is designed to improve the amenity of the College as well as to encourage public access.

The works include extensive rebuilding of the seawall, some of which is in ruinous condition and in danger of collapse. This will allow all of the walkway to be constructed on land, although it will not be the same width throughout its length, because of the requirements of the school playing field. Members should note that this school was built on a site that, while very attractive, is actually smaller than normal for a high school, so careful consideration has to be given to ensuring that space for the students is not compromised.

There will also be some steps down to the water, extensive plantings including 50 new trees and many intertidal species, and storage space for outrigger canoes. There will be some turbidity and loss of habitat during the construction phase, but the end result will encourage additional habitats and better water quality. Because of the state of the seawall the work is quite urgent.

St James Park

There is a development application for the demolition of the tennis shed at the park. This work is consistent with the landscape plan that has already been adopted by Council.

Johnstons Creek Parklands Masterplan

This Masterplan which came before the Environment Committee of Council on 18 March has now been approved for public exhibition. The Society will make comments on the exhibited proposal, and because of the very wide and justified public interest in these very extensive and expanded parklands, the Society invites members to send their reactions to me at macindoe@bigpond.net.au. The Society's draft comments will also be made available for amendment and revision. Many members have particular interests, and it would be useful if those

members made their own submissions in addition to those of the Society. Details of the exhibition period and further public consultation should be available soon.



City of Sydney Council visit the April Glebe Society Management Committee meeting (Image: Virginia Simpson-Young)

The Society and the City Council

In the forty-four years of its existence relations between the Society and government, especially local government, have fluctuated all the way from friendly to outright hostility. The Society has, I think wisely, and unlike some community groups, maintained and protected its independence. Two events in the last month lead me to question how close the relationship should be.

On 7 April an enthusiastic and articulate group of 20 attended the Society's Strategy Workshop. The list of topics for discussion was apparently based on a City document, *Sustainable Sydney 2030*. This resulted in a great deal of overlap and repetition, and despite the imminent changes to planning legislation, there was not a word about planning issues. Nor was there anything about Bays and Foreshores, Heritage, Environment, or any other of the major issues that concern us as a community.

Later in the week, on 10 April, City Council staff attended the Management Committee meeting to explain a proposal to build a nine storey residential and commercial building on the corner of Bay St and Wentworth Park Rd. It was clear from the discussion that the City is under a lot of pressure from the State Government to support such intensive residential developments, and that the adjacent Affordable Housing Project in Bay and Cowper Sts had set a precedent. The excessive height of Harold Park is another example. The Society is highly critical of the Affordable Housing Project, and does not accept this precedent.

Proposed Changes to Planning Legislation

Alison McKeown represented the Society at a rally at Parliament House on Thursday, 28 March, organised by the Better Planning Network to publicise the presentation of the petition expressing the need for greater consultation and extended period for comment on the proposed planning changes. Janice Challinor attended a meeting organised by the City on the proposed legislation on Saturday, 13 April, when the City offered support for community groups. The White Paper

was released on Tuesday, 16 April (see the article about the White Paper in this Bulletin).

Given the impact of those changes on the right of residents to object to development applications it is possible a number of parliamentarians who normally support the Government may demand changes. The Society will write to these legislators to encourage them to take a firm stand. It is likely the Society will be involved in a public meeting to publicise the issue.

Neil Macindoe

Opening of Winima House, St Scholastica's

The formal opening and blessing of Winima House for student boarders at St Scholastica's College was a grand occasion held on 10 March. Margaret Cody and Mairéad Browne attended on behalf of the Glebe Society. In the large gathering were representatives of the Indigenous community; Sr Clare Condon (Superior of the Sisters of the Good Samaritan); and the Hon Tony Burke (Minister for Sustainability, Environment, Water, Population and Communities). After prayers, interspersed with music by the student choir and orchestra, the Indigenous students danced the way to Winima House. Winima is a splendid residential facility located in the new building overlooking Maxwell Rd and Harold Park. Its development was partially funded by an Indigenous Building Infrastructure Program grant.

Mairéad Browne

FROM THE TERRACES

In Praise of the Cantilevered Balcony

The “cantilever” has been defined as “a beam projecting beyond a wall or column and supported by the rigidity of the connection from which it projects”.¹

This rather dry description – and the physics implicit in it – hardly does justice to a form of architectural magic which is seemingly gravity-defying and conjures lightness, airiness and grace.

The world famous example of cantilevering is Frank Lloyd Wright's *Fallingwater* at Bear Run, Penn. The house was built as a retreat for the Kaufmann family who were Pittsburgh department store owners. Completed in 1939, *Fallingwater* was built *over* a river and waterfall and *cantilevered* off a cliff. The projecting balconies seem to hover amid the lush surrounding vegetation. The lasting impression is that the building is all about space, rather than mass.

Glebe can boast some rather more modest, yet nevertheless charming, examples of cantilevering. The former antiques shop on the corner of Glebe Point Rd and Mitchell St is a notable example with a balcony which wraps around two sides. The elegant ironwork has a strongly vertical pattern. A

concave striped corrugated iron roof completes the picture – and the picturesque. A ramble westwards up Mitchell St will reveal other cantilevered balconies on former corner shops but numerous examples (some in better condition than others) can be found around Glebe. Another is the Australian Youth Hotel (pre 1867) in Bay St where the cantilevered balcony serves to highlight the curved corner of the building and its entrance below.



Cantilevered balcony, Australian Youth Hotel (Image: Phil Young)

Painting the Town Red

Step into your time machine and imagine flying over 1880s Sydney. Apart from traversing the town from north to south, or east to west, in the blink of an eye, colour – or lack of it – would be startling. Unadulterated drab. The roofs of early Sydney were slate or galvanised iron. Sydney's now ubiquitous orange-red terracotta roof tiles made their debut in the early 1890s.

In 1892, the first consignment of Marseilles tiles arrived in Sydney from France but the consignee was not in a position to take delivery. After some negotiation, it was arranged that the Wunderlich Company take delivery and thereafter they began importing regular shipments. "Up to 1914, 110 full

cargoes were received, representing 75 million tiles, which would have been sufficient for roofing 40,000 houses of average size."²

Imports of terracotta tiles were severely curtailed by World War I and Wunderlich went into local production in both Sydney and Melbourne.

The arrival of the terracotta roof tile coincided happily with the emergence of the Federation style and is now synonymous with its often complex roofs and subsidiary gables.

Notes: 1: Apperly, R, Irving, R and Reynolds, P, *Identifying Australian Architecture*, A&R (1998); 2: Fraser, H and Joyce, R, *The Federation House*, Weldon (1991), p44.

Liz Simpson-Booker

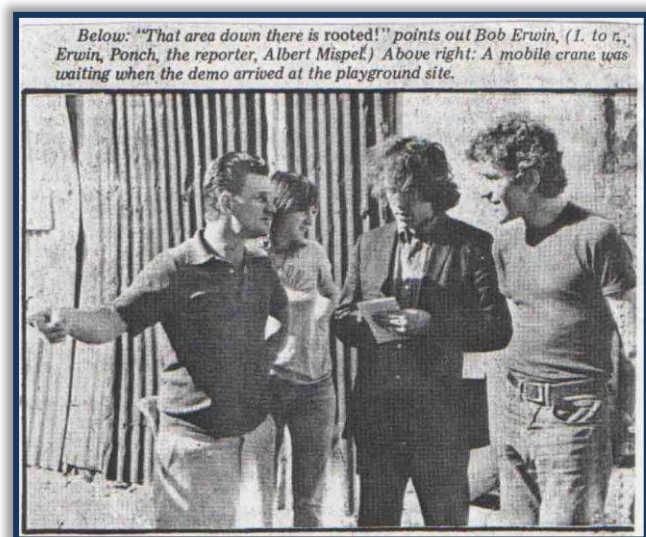
GLEBE SOCIETY'S ORAL HISTORY PROJECT

In its early years members of the Glebe Society led a number of magnificently successful campaigns that had implications not just for Glebe but for the entire City. Some of them gained national and even international recognition. A number of members have suggested it would be a good idea to record interviews with these members, not only for their historical value but also to give members who have not had a chance to meet and talk to them insight into their thinking and motivation.

One of the most outstanding campaigns was the one against Radial Expressways in the Inner City led by Albert Mispel. I have recorded an interview with Albert, and the audio will be made available in due course. In the meantime, an edited transcript of the interview will be published over a series of Bulletins. Below is the first of these transcripts.

Neil Macindoe

Albert Mispel and the Anti-Expressway Campaign (1970-1977)



Below: "That area down there is rooted!" points out Bob Erwin, (l. to r., Erwin, Ponch, the reporter, Albert Mispel.) Above right: A mobile crane was waiting when the demo arrived at the playground site.

Albert Mispel (far right) (Image: <http://www.mispelit.com/glebe/index.html>)

Q: What was the proposal for expressways through Glebe?

A: One of our approaches was looking at the whole expressway system for Sydney. There were ten proposed expressways, all radiating from the centre

of Sydney. Really right from the beginning, rather than the NIMBY approach, we were looking at whether these were viable things to build. The one that was of immediate danger was the North Western, but the Western expressway was actually wider and would have taken out a lot more of the Church land (Glebe Estate) and Annandale.

Some of the NW expressway was going to go under Glebe, which lessens the impact, but it happened to be the first, so the battle concentrated on the NW, but the arguments really were related to the whole idea of expressways.

Q: What gave you an understanding of the impacts?

A: I had no experience at all. We bought a little house in Cardigan St near Lyndhurst, and one day got a letter from an estate agent saying we will look after the transaction of your dealings with the Department of Main Roads for selling your house. I rang up the agent and found we had become affected, but it took an estate agent to tell us, rather than the DMR or other government agency. So we were a tad angry about that and it motivated me to

find out why the path of the NW expressway had changed.

Q: What was your understanding of why the expressways were proposed?

A: A couple of forces: big retailers used to be a powerful force. As a kid we would hop on the train and go shopping in town. We were starting to have Grace Bros' stores located further afield – they had bought a place in the City that had been taken over during the War.¹ Not from the beginning, but as we looked into the plan, we saw that what was also happening was that all the bays and inlets around the Inner City from Blackwattle Bay over to White Bay and Mort Bay in Balmain were being made into container shipping wharves, and the Dept of Main Roads, working closely with the Maritime Services Board, was making access for all these trucks to the north, south and west, and the roads went to, or near, all these bays and inlets. There were problems in Balmain, as they used to bring trucks up the very narrow streets that were there. A woman was killed one day when a truck crushed her car. They were not suitable places for container shipping and they needed big roads

Secondly, going back pre-War, they wanted to clear the slums of Sydney. All these Inner City places were clearly slums, and society would be better off

if they were cleared out. That and the retailers and the whole radial nature appealed to the planners. A lot of the planning was Buck Rogers thinking from the 1930s.

Q: What was your impression of Glebe when you moved there? Was it ripe for redevelopment?

A: I came back from seven years in New Guinea living in rather isolated places, and loved being back in the City and got a job teaching in Glebe. Because for seven years I'd lived on premises I'd worked in it seemed ludicrous to me that I should have to set myself up to travel to work, so I rented a place nearby. I found other advantages after I did that. One was I could walk in and out of the City. After being in the bush so long it was lovely to walk in the crowded City. I loved old houses, I loved the housing stock. I also got on very well with the people working here, the salt of the earth people. They were incredibly friendly. It was a joy to walk along the streets and chat to people. I didn't realise that wasn't normal until a period in our life when we moved to Drummoyne, where you don't do that sort of thing.

Notes: 1. The Grace Building in York St had been commandeered by General McArthur. Grace Bros received generous compensation after the War ended, which they used to open suburban stores.

(To be continued)

ANZAC DAY

Anzac Day: Glebe connection in recently unearthed WWI photos

Rod Holtham recently viewed the exhibition at the the Australian War Memorial called Remember Me: the Lost Diggers of Vignacourt. He unearths the Glebe connection.

Readers may be interested in seeing the above exhibition which is on until 31 July. Even if you are not interested in the extended visit to see the best military history exhibition in the world, the connection to Glebe is on display. Tag it onto your next visit to the National Gallery; we usually do.

You will no doubt be aware of the discovery of about 4,000 glass photographic plates taken by Louis Antoinette on the western front during World War I in the Somme region. These plates were purchased by Kerry Stokes and he donated more than 800 to the AWM in August last year.

Why the connection to Glebe? Well one of the photos taken of the Officers and NCO's of the 18th Battalion show Glebe-born Lt. Joseph Maxwell VC

MC and Bar DCM. You will remember that I wrote about Joe for Bulletin 2/2011 (March/April).

Rod Holtham



Officers and NCO's of the 18th Battalion. Front Right is Lt Joe Maxwell VC MC and Bar DCM

Who lived at Margaretta Cottage? The Anzac Connection

Anzac Day reminds us of those 792 Glebe residents who volunteered for active service during WWI. Frederick Henry Wood, who grew up at Margaretta Cottage in Glebe, served as a Trooper in the First Australian Light Horse Regiment during the Gallipoli campaign. Dr Anne Flood, his granddaughter, recalls the story of her family in Glebe.

In my box of family photographs is a small blue silver edged invitation to the Diamond Wedding Anniversary of Mr and Mrs H.A. Wood on Wednesday 30th September 1952, at their home, *Margaretta Cottage*, Glebe Point. I met my great grandparents only that once, however vivid in my memory is jumping and sliding on the magnificent wooden staircase with my cousins while my great grandparents, both silver-haired, cut the cake decorated with a diamond ring. Great grandfather looked on rather disapprovingly at the youngsters frolicking on the stairs.



Fred Wood, Aged 3 (Image supplied by Anne Flood)

Henry and Emily Wood were married in Luton, England 1892 and had two children, Hilda and Frederick Henry (my grandfather), born 9 August, 1895 at Luton in the Sub-District of Nottingham South West, England. The family sailed for Sydney in 1900 in a Third Class berth on the Orient Liner *Oruba* and settled at *Margaretta Cottage*, 6 Leichardt St, Glebe Point. Hilda and Frederick Henry were followed by two boys, Sydney and Sydney Newton, neither surviving, then Florence, Herbert, Louisa (“Louie”), twins Reginald and “Dolly”, Harry, Arthur and Rosa (possibly Rosetta

after Henry Alfred’s mother). Rosa was born in 1915 while Frederick, my grandfather, was at Gallipoli.

My grandparents’ marriage certificate dated 24 February, 1917, states Henry Alfred Wood’s Rank or Profession as Hat Manufacturer. My Aunt Sylvia remembers visiting the cottage as a child, with her mother, Ethel (“Gert”) Wood, entering via the back lane, never by the front entrance. Henry and Emily conducted a Millinery business in the stables behind the house and my grandmother always encouraged Sylvia to be polite and perhaps she might be given a new bonnet. Young Sylvia only once went onto the front lawn. She would sit for morning tea at the table of a rather large kitchen where the family would eat. A photograph of Fred and Gert’s three boys, Allan, Harry, and my father Fred Wood, was taken in 1928 in the front garden of the cottage.

My father, Frederick Wood (Jnr), who died in 1993 told me that Henry Wood stood for election, most probably for the Conservative Party. He was a prominent businessman and a member of Tattersall’s Club in Sydney. During the War (WWII) he would entertain his son and grandsons at Tattersall’s. My father also reported that Henry had race horses that my grandfather trained hence his successfully enlisting in the Light Horse.

Young Fred worked as an apprentice cabinet maker for Heath & Company at Alexandria, Sydney. The boys at Heaths purchased lunch from a Vine’s grocer’s shop in Belmont St where Fred met Ethel Gertrude (“Gert”) Vine. Two weeks after his nineteenth birthday, my grandfather left home at *Margaretta Cottage* to enlist in the 1st Light Horse Regiment on 24 August, 1914. The Regiment was commanded by Colonel Hugh Venables Vernon, grandfather of Katharine Vernon of Glebe. I once asked my grandmother “How did you meet Pop?” She laughed and replied: “He courted me by riding out in full uniform to my father’s shop. I laughed as he reared his horse up in front of me. He was always such a larrikin.” ... first entry in Frederick Henry Wood’s Service Record is 24 August, 1914 – “10 days Detention”.

Also in the 1st L.H. Regiment Machine Gun Section was 34 year old Trooper Arthur Ernest Coulter, from Forbes, NSW who later married Hilda Wood, and also 26 year old George Herbert (Herb) Puckett from Yass, NSW. Whilst serving at Pope’s Post, on the Gallipoli Peninsula the 1st L.H. Regiment was called to form a Valley night patrol in the Monash

Valley North (N.Z. Valley). Sharpshooters worked in pairs – one observing and one shooting. In the early hours of 1 June, 1915, one shot rang out and both my grandfather and his mate Herb fell with gunshot wounds; Herb in the right elbow and Fred in the right thigh. Fred was invalided to Glymenopoulos Hospital at Alexandria and embarked for Australia on H.T. Euripides, arriving back at *Margaretta Cottage* 1 October, 1915. He was discharged Medically Unfit on 27 November, 1915.

In November 1941 my grandfather enlisted first in the Garrison Battalion and then, after being accused of taking the ‘soft’ option, in the 12th Australian Water Transport Operating Company, putting his age down to serve together with his four sons. All five came home.

Henry Alfred and Emily Wood died around 1956 and Rosa, who lived with them, inherited *Margaretta Cottage*. She continued the Millinery business and took on boarders. The house was then sold in the mid – late 1960s, to Dr Vincent Sheppard. In 1973, a year after my grandfather died, my grandmother gave me directions to Margaretta Cottage and I found the house at 6 Leichardt Street, secluded behind a tall hedge. In 2010 I discovered that the annual Glebe Music Festival was conducted at *Margaretta Cottage*. Eager to be able to visit the house that had been so pivotal in my family, I contacted Dr E. David McIntosh, finding that David was indeed the owner. Together with my niece Amity, I was invited to be his guest at the Music Festival in 2010. Some 58 years later, I was once again able to stand (not frolic!) on the staircase and to visit the bottom storey rooms and the stables.

What began with Henry Alfred Wood and Emily Gardner now amasses to close to a thousand descendants whose lives have been enriched through a heritage of courage and strength, tempered with humour and a selflessness and commitment to fight for freedom and to stand by a mate.

Anne Flood

Book review: *In the Footsteps of the First -1st Australian Light Horse Regiment*, by Anne Flood

Dr Anne Flood has recently written the history of the 1st Light Horse Regiment AIF during the 1915 Gallipoli Campaign. The book provides an extremely insightful account of the day by day grind and horror of the eight month campaign as told through the words recorded in the War Unit Diaries by the commanding officers Lieutenant Colonel John Baldwin Meredith and Major Hugh Venables Vernon, coincidentally my grandfather. Anne has provided additional explanatory notes, photos, sketches and family stories throughout the book which I found helped me gain a further appreciation of the daily lives and sacrifice of those who volunteered for active service during WW1. Anne has dedicated the book to her grandfather, Frederick Henry Wood and her father Frederick Noel Wood and the women who waited for them to come home from War.

The book is priced at \$39.99 and is available for purchase by contacting the author, Dr Anne Flood, by emailing her at anneflo@tpg.com.au.

Katharine Vernon

GLEBE SOCIETY EVENTS

How our Community was Galvanised by the Development Behemoth

Journalist and author **Robert Darroch**, co-founder and first Vice-President of the Glebe Society, has agreed to take members back to those days when the future of Glebe hung in the balance. Hear Robert in conversation with Ted McKeown, as he reminisces about the Glebe Society's beginnings. Light refreshments will be provided.

When and where? Friday 10 May at 6:30pm; St Scholastica's College, 2 Avenue Rd.

How much? \$15 per person; Bookings are essential. See the enclosed flyer.

Off Broadway! Exploring the Galleries of Chippendale – Walking Tour

Saturday 1 June, 12 noon – 4.30pm

Enjoy a fascinating tour of art galleries/spaces in Chippendale and discover this special art precinct – all within a few minutes' walk from Broadway. We'll visit four or five very different galleries (from the tiny to the spacious), be introduced to the exhibitions by each curator, and have lunch at the Mission Café & NG Gallery. Painting, sculpture, photography, digital art: traditional and modern, Australian, European, Asian – something for everybody!

Take a bus down Broadway and meet at the White Rabbit Gallery in Balfour Street (behind the new Central Park high-rise development) for our own tour starting at midday. The White Rabbit Gallery shows contemporary Chinese art over three floors

in a renovated warehouse; the current exhibition opened in February.

Bookings are essential by 24 May. \$25 per person; includes a delicious lunch with vegetarian options. See the flyer for booking details.

OUT AND ABOUT

Thirsty Thursdays

Members and friends are invited to meet in restaurants in and around Glebe, usually on the first Thursday of each month at 7pm, to eat and talk with other people who live in Glebe. We visit a different restaurant each month, varying cuisines. Put these dates in your diary now.

On Thursday 2 May we will go to *Despana*, 101 Glebe Point Rd; Thursday 6 June we will go to *Sushi-Ya* Japanese restaurant, 166 Glebe Point Rd (*The Valhalla*); and Thursday 4 July we will go to *Na Zdrowie* Polish Restaurant, 161 Glebe Point Rd.

Edwina is away during May, so please email macindoe@bigpond.net.au or ring me on 9660 0208 by the Wednesday before the dinner to let me know if you are coming, or if you are likely to be late.

Jan Macindoe

Glebe Voices: Brooke Green

Please join us at a talk with musical demonstration to be given by Brooke Green, an early music specialist, composer and ABC producer. The event will be held at *Ombretta* (previously *La Tavolaccia*) on Glebe Point Rd (near the Toxteth Hotel). This new restaurant will have drinks and antipasti available for purchase.

When? Saturday May 25; 4.30 pm. Please note that this event must finish by 6pm to permit the restaurant to set up for its dinner guests.

Glebe Bushcare Group

We are a small group of congenial people working to maintain and enhance the parklands near Rozelle Bay. This involves weeding and planting of native plants to improve the overall amenity of the park and increase habitat for small native birds.

We are based at Rozelle Community Nursery on Chapman Rd. The group meets every Wednesday, starting from 8.30 - 9 am and finishing about 12 - 1pm. New volunteers are always welcome. No special skills are required and tools are provided. Please feel free to visit us on a Wednesday.

Susan Copeland (scop9682@gmail.com).

Media Vita

Using the Christian tradition it is possible to view death from a perspective that encourages contemplation prior to the event rather than after, forward-looking rather than back. In this way, death is viewed with a sense of comfort and release; a long awaited paradise. The Latin antiphon of 750AD *Media vita in morte sumus* ('in the midst of life we are in death') resonates with this idea and is explored in our first concert of the year. Help us unravel the meaning behind this enigmatic phrase through music such as Harris's *Faire is the Heaven*, Stanford's *Justorum animae* and other works by Poulenc, Brahms, Purcell, Rheinberger and more.

When and where? 3pm, Sunday 5 May 2013; St Scholastica's Chapel, Glebe; Musical Director - David Taylor. Please purchase tickets on-line or call 0413 440 173 to order tickets. Tickets will also be available at the door.

Jazz at the Harold Park Hotel

The inimitable Fergus Furlong and Band is resident on Sunday afternoons, 4pm to, at least, 7pm, in the first floor, Dash Bar. Warm jazz, cool drinks.

Players in the Pub

We announce the return of our popular series of moved and costumed playreadings. The play is *Simon Lee or The Murder of the Five Fields Copse* by George Dibdin Pitt (author of *Sweeney Todd*, *The Demon Barber of Fleet Street*); directed by Lyn Collingwood.

When and where? 7pm Wednesday 29 May 2013; upstairs at the Harold Park Hotel 70A Ross St Glebe. Free admission.

The kitchen is open for orders from 5.30pm, and mine host, Will Ryan, asks that they be placed as early as possible. The menu includes snacks, plus light and full meals.

Lyn Collingwood

Gleebooks book launch: *Positive Relationships: Evidence Based Practice across the World* by Sue Roffey

Introduced by Assoc. Professor Ann Brewer, Deputy Vice-Chancellor, University of Sydney

Relationships are at the heart of our lives; at home with our families, with our friends, in schools and colleges. The quality of these relationships determines our individual well-being, how well we learn, develop and function, our sense of

connectedness with others and the health of society. Based in the science of positive psychology this unique volume brings together authorities from across the world to write about how relationships might be enhanced in all these different areas of our lives. A/Prof Sue Roffey is the Founder and Director of Wellbeing Australia.

When and Where: Friday 3 May, 6pm for 6.30pm; gleebooks, 49 Glebe Point Rd, Glebe; cost: free. Bookings: gleebooks - 9660 2333 or email: events@gleebooks.com.au.

GLEBE-BITES

New lane named after Melina Galluzzo

The second official Lane naming will occur on Sunday 5 May, 2-3pm. The first was Elsie Walk, named in honour of the first Women's Refuge in Australia. The second is in honour of Melina Galluzzo. These actions were the initiative of the Glebe Community Action Group. To remember Melina, who worked in Galluzzo's Fruit Market for over 50 years, the Glebe Community Action Group initiated a project to name the lane just off Campbell St between St Johns Rd and Norton St, 'Melina Lane'. City of Sydney Council has approved this naming.

Council will be represented by Robyn Kemmis, Deputy Lord Mayor. Her Excellency the Governor, Marie Bashir, is coming as an invited guest. Father Colin Fowler will attend, together with members of the Galluzzo family. *Jan Wilson*



Melina Galluzzo outside St James Church (Image: Galluzzo family)

SOS – Store Our Stuff?

All those platters, jugs, linen etc that serve food and drink at Glebe Society events need a home. If you have a spare cupboard or space in your garage or storeroom we would love to fill it! Email dorothydavis@fastmail.com.au if you can help.

Fantail Flycatcher in Glebe

Last month Leonie Dawes was excited to see a small bird (that she had not seen before) in her garden in Wigram Rd. It was a Fantail Flycatcher (see: wikipedia.org/wiki/Rufous_Fantail) and Leonie is wondering whether there have been other sightings in Glebe. Judy Christie, a member of the Blue Wren Subcommittee commented as follows: "Every now and again there are sightings of Rufous Fantail (*Rhipidura rufifrons*) in Glebe in autumn, (although it's been a few years since I've seen one at my place in Upper Rd). Birds are on the move north, where they winter, and are often sighted in suburban gardens, passing through. It's one of the special treats of having good garden habitat."

Andrew Wood

COMMUNITY

Response to letter in last edition: Two Glebes?

Whilst there is the perception amongst some people in the village that there are 'two Glebes', I feel it is important that we stop perpetuating this divisive notion. The character of Glebe is defined by the diversity of its people and the interaction between the communities and not by its geography.

It is interesting to note that many people, including some members, are not fully aware of the interaction that occurs between - what some

consider - the 'north' and 'south' of Glebe. Here are some examples:

- ✓ Volunteering for *Centipede* (Glebe Public School's out of school hours care)
- ✓ Friends of Centipede – provision of financial support
- ✓ Volunteer support for Mitchell St Fete for children
- ✓ Preparation and support for grant applications for community groups
- ✓ Participation in cross-sectional community groups, **FLAG** (Forest Lodge & Glebe Groups) and **COGG** (Coalition of Glebe Groups)
- ✓ Volunteer teaching at Glebe Youth Service
- ✓ Attendance at Housing NSW Forums
- ✓ Support for residents in Housing NSW
- ✓ Donations to Glebe Community Op shop
- ✓ Donations to Glebe Public School to enable children to attend camp.
- ✓ Support for Glebe Community Development Project (joint project with Housing NSW and University of Sydney)
- ✓ 'Whip around' financial support for Sadie King, who was robbed in Glebe.

When thinking about who lives in Glebe, it is important to examine our universal needs. Regardless of where people live or their financial status, everyone wants the same services: schools, medical centres, early childhood centres, City of Sydney Customer Service Centre, post office, local shops, banks and library are common requirements for all residents. In fact everyone desires a safe and friendly environment.

Whilst the majority of social housing is located in the southern end of Glebe, it may be a surprise to some, that there are also social housing apartments located at Glebe Point and on Glebe Point Rd north.

For further information:

- ✓ Glebe Community Development Project (joint project Housing NSW & University of Sydney): http://www-faculty.edfac.usyd.edu.au/projects/glebe_cdp/
- ✓ Glebe Youth Service: <http://www.glebeyouth.org.au/>
- ✓ **FLAG** (Forest Lodge and Glebe Groups); Ally dePree-Raghavan alison.depree@sydney.edu.au
- ✓ **COGG** (Coalition of Glebe Groups) John Gray Chair COGG johngray.glebe@bigpond.com
- ✓ Centipede: <http://www.centipede.org.au>; <http://www.centipede.org.au/friends-of-centipede.html>

Jan Wilson

Glebe Talent at Mitchell St Fete

The Fete was held on the Peter Forsyth Auditorium Forecourt from 10am – 2pm on Sunday 24 March 2013. It was the first year it had been held in this location and it proved to be very successful. The purpose of the Fete is to provide activities for the children of Glebe and their parents. It was organised by FLAG (Forest Lodge and Glebe Community Groups) in conjunction with Glebe Community Development team. The focus of this year's Fete was to showcase '*Glebe Talent*'. Young people displayed their talents in singing and dancing. All activities for the children were free.

Glebe Public School P&C, City of Sydney, Mirvac, Glebe Fire Brigade and LAC Glebe Police lent their support. City of Sydney Community Grant enabled the event to be organised. The Deputy Lord Mayor, Robyn Kemmis, a resident of Glebe, officially opened the Fete. A few Glebe Society members worked as volunteers. Our President was there to assist with the setting up of stalls and equipment. John was proudly wearing his Glebe T-shirt. The Fete has been held every second year since 2006. Such an event requires a massive amount of preparation and project management. Apart from a City of Sydney Grant, there is no other paid support; hence its success relies heavily on members of the community to volunteer their time.

Note: The Glebe T-shirts help to support Glebe Public School P&C. They can be bought for \$20 at the school office during school hours. All colours and sizes are available.

Jan Wilson



Mitchell St Fete 2013 (Image: Jan Wilson)

FOR YOUR CALENDAR

Thursday 2 May; 7pm; Thirsty Thursday: *Despana*; 101 Glebe Point Rd.
 Friday 3 May; 6pm; Gallery Red: *An Intimate Dimension* (Exhibition opening); 131-145 Glebe Point Rd.
 Saturday 4 May; 10 am; community consultation on draft Masterplan for Johnstons Creek Parklands.
 Saturday 4 May; 7:30pm; *Talmacs Music Network*; Cafe Church Space; 37 St Johns Rd Glebe; \$25 / \$15.
 Sunday 5 May; 2pm; *Official naming of Melina Lane*; see article this Bulletin.
 Wednesday 8 May; 7-9pm; Management Committee Meeting; Glebe Town Hall.
 Friday 10 May; 6:30pm; *Conversation with Robert Darroch*; St Scholastica's; \$15; (Flyer enclosed).
 Saturday 25 May; 4:30pm; *Glebe Voices: Brooke Green; Ombretta*, near Toxteth Hotel).
 Wednesday, 29 May; 7pm; *Players in the Pub*; Upstairs at the Harold Park Hotel.
 Saturday 1 June; 12 noon; *Off Broadway!* (See enclosed flyer); Chippendale; \$25.
 Thursday 6 June; 7pm; Thirsty Thursday: *Sushi-Ya* Japanese restaurant; 166 Glebe Point Rd (The Valhalla).
 Thursday 4 July; 7pm; Thirsty Thursday: *Na Zdrowie* Polish Restaurant; 161 Glebe Point Rd.
 Friday 26 July; 6pm; Glebe Society event: *Welcome to New Members*; Harold Park Hotel.

The Glebe Society Inc Established 1969

Management Committee			
President	John Gray	02 9518 7253	president@glebesociety.org.au
Vice President	Jan Wilson	0408 207 784	janwil@bigpond.com
Past President	Mairéad Browne	02 9552 2888	browne.mairead@gmail.com
Executive Secretary	Di Gray	02 9518 7253	secretary@glebesociety.org.au
Meetings Secretary	Margaret Cody	02 9692 9384	minutes@glebesociety.org.au
Treasurer	Laura Forsyth	02 9228 9386	treasurer@glebesociety.org.au
Treasurer	Bridgette Leech	02 9248 5555	treasurer@glebesociety.org.au
Committee members			
	Andrew Craig	02 9566 1746	acraig@awedwards.com.au
	Rosalind Hecker	02 9660 7056	rosalindh@alpha.net.au
	Jeanette Knox	02 9660 7781	jk2037@bigpond.net.au
	Bill Simpson-Young	0411 871 214	bsimyo@gmail.com
	Phil Young	02 9692 9583	phil@ancest.com.au
Convenors			
Bays and Foreshores	Lesley Lynch	02 9660 5084	llynch@bigpond.net.au
Blue Wrens	Madeleine Bowman		madeleine.bowman@gmail.com
Environment	Jan Macindoe	02 9660 0208	macindoe@bigpond.net.au
Heritage	Liz Simpson-Booker	02 9518 6185	lizsimpsonbooker@bigpond.com
Planning	Neil Macindoe	02 9660 0208	macindoe@bigpond.net.au
Transport & Traffic	Murray Jewell	0405 921 945	mpjewell@gmail.com
Working Groups & Contacts			
Archivist	Lyn Milton	02 9660 7930	milton.lyn@gmail.com
Bulletin Editor	Virginia Simpson-Young	0402 153 074	editor@glebesociety.org.au
Website Coordinator	Phil Young	02 9692 9583	webmaster@glebesociety.org.au
Events Coordinator	Erica Robinson	02 9692 8995	ericarobinson4@optusnet.com.au
History	Lyn Collingwood	02 9660 5817	lyncol1@optusnet.com.au
History of Glebe	Max Solling	02 9660 1160	
Glebe Society History	Jeanette Knox	02 9660 1160	jk2037@bigpond.net.au
Membership	Cheryl & Bryan Herden	02 9660 7371	herden@pacific.net.au
Plaques Project	Peter Robinson	02 9692 9995	peterrobinson4@optusnet.com.au

IN THIS ISSUE

Planning White Paper: A Cynical Betrayal of our Community	1
Upcoming Glebe Society Events	1
New Riches from Website History Pages	2
President's Page	3
Planning Matters	4
From the Terraces	5
Albert Mispel and The Anti-Expressway Campaign	6
Anzac Day	7
Glebe Society Events	9
Out and About	10
Glebe-Bites.....	11
Response to Letter in Last Edition: Two Glebes?	11
For your Calendar	13



The Glebe Society Inc

PO Box 100 Glebe NSW 2037

Postage
Paid

Membership of the Glebe Society

Individual member	\$45
Joint (2 people, one address)	\$55
Household (more than 2 adults and/or children, one address)	\$60
Concession (student or pensioner)	\$20
Institution or corporate	\$110

How to join

- ✓ download a membership form from www.glebesociety.org.au; or
- ✓ write to the Secretary at PO Box 100, Glebe, 2037; or
- ✓ email secretary@glebesociety.org.au.

Community Contacts

Neighbourhood Services Centre

Manager: Nick Hesse
Office: Glebe Library, 9am-5pm Mon-Fri.
Phone: 9298 3191 or 0400 627 714.
Email: nhespe@cityofsydney.nsw.gov.au

Sydney City Council Customer Service

Telephone: 9265 9333(24 hours)
Email: council@cityofsydney.nsw.gov.au
Website: www.cityofsydney.nsw.gov.au

Abandoned shopping trolleys

Trolley Tracker: 1800 641 497