



Glebe Society Bulletin

ISSN 1836-599X

No.1 of 2014 (March 2014)

The Divide is Narrowing...

Glebe Public School has been lauded in the media for its exceptional success in engaging its students and in increasing attendance rates!



Shandi McEwen from Glebe Public School. (Photo: Kate Geraghty, SMH)

Congratulations to school Principal Vicky Pogulis and her staff for their efforts and the relationships they have built with the community. These include the Glebe Society, *Centipede Before & After Care*, parents, Glebe Police and local businesses. Individuals have also provided assistance by way of classroom and financial support.

Below is an extract from a *Sydney Morning Herald* article, 13 February 2014:

Vicki Pogulis commented on a time when not a single student at Glebe Public School had a perfect attendance record but over the past decade the principal has watched as one-time truants have been transformed into eager learners.

Almost one-third of the school's 130 students is Aboriginal and its student attendance rate of 93 per cent is regarded as a major achievement. Glebe Public School is already exceeding the proposed 90 per cent attendance rate benchmark with Ms Pogulis saying it comes down to establishing strong networks with the local community.

'We teach the children reading, writing and 'rithmetic – the good old-fashioned three Rs' she said. 'But we also observe an equally important set

of three Rs – that's relationships, relationships, relationships. We have really good strong relationships with the staff, the students and the community.'

The school has an 'attendance bus' that collects children from their homes and brings them to school. Red Cross provides breakfast and prizes are awarded for being at school on time. Parents and carers are involved in programming and policy-making, resulting in a curriculum that engages the children.

Similarly, the home-school liaison officer and the Aboriginal school liaison officer take a supportive approach. 'They are part of the community' she said. The school has also achieved another target of the program, that aims to end indigenous inequality by 2031, with its above average performance in the National Assessment Program – Literacy and Numeracy (NAPLAN).'

If you wish to volunteer at the school, visit the website, <http://www.glebe-p.schools.nsw.edu.au/>

Glebe is a *real* community!

Jan Wilson

Volunteer Needed

Do you use Microsoft Word? The Glebe Society is looking for a volunteer to assist with keeping its website up to date.

You don't need any previous skills or experience in helping to maintain the website. If you know how to use the Bold or Italics function in Word, how to Copy & Paste, and if you can spell okay and can query badly written sentences, then you can do this work.

Most of the content of the website is written by others, so it's usually just a matter of copying it to the best place on the website. In any case, we'll show you how to do it, and will help you along the way.

It does require someone who is interested in the Glebe Society.

Call Phil Young on 9692 9583 to discuss what's involved.

**Glebe Society letter to NSW
Minister about Planning Laws.**

THE GLEBE SOCIETY INC.
ABN 99 023 656 297

Conserving our heritage • Encouraging a sense of community • Working for Glebe's future

PO BOX 100
GLEBE NSW 2037
AUSTRALIA

www.glebesociety.org.au



Hon. Brad Hazzard
Minister for Planning and other MPs

Dear Minister

PROPOSED PLANNING LEGISLATION

The Glebe Society is opposed to the Planning Bills currently before Parliament. In the Society's view, the Government has failed to deliver the promise it made before the last election to return planning powers to the community.

The legislation is deeply flawed in other respects. It does not enshrine environmental sustainable development principles, as occurs in other NSW Acts. It fails to provide a mechanism even for the limited public consultation it proposes. Before it was amended, it proposed code-based assessment, which allows excessive latitude to developers. It fails to provide for resident comment at the development application stage, which is precisely when residents are likely to become involved. It removes powers from the authority best equipped to make planning decisions, namely local government, and hands them to appointed bureaucrats. It perpetuates the discredited system of private certification. It limits rights of appeal, and perpetuates an arbitrary system of approvals through Strategic Certificates, and hence creates avenues for corruption. It does not provide a mechanism for increasing the supply of affordable housing, and does not ensure sufficient environmental and heritage protection.

Using the powers granted to the Minister by the previous government is not an option. It was the abuse of these powers that discredited planning in NSW and led the ICAC to condemn them as likely to lead to corruption.

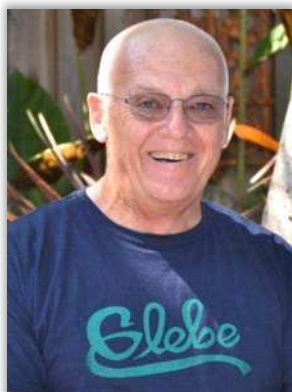
Such flawed legislation needs to be completed redrafted in the light of these shortcomings, and the public consultation process needs to be repeated with the new draft. The Society will certainly contribute to such a positive process, to ensure a genuinely improved planning regime for NSW.

Yours truly

John Gray

John Gray PhD
President
20/2/2014

President's Column – John Gray



So we could get our strategy right and all commit to it, we held workshops and discussions and broadcast drafts. We put a lot of effort and time into getting it right and as I told you recently, we have as a Society committed to our *Strategy 2013-2019: Engaging Glebe*. The strategy is on our website (<http://tinyurl.com/18v64sa>)

All subcommittees and the management committee analyse how their activities contribute to *Engaging Glebe* and you can do the same. No big deal. Just read and choose one item where you can make a difference. Let me know about it. It could be as simple as letting your community know about our Website or Facebook or letting me know of a few ideas.

We have been *Engaging Glebe* through our committees and officers over the last few months. Most of this will be reported by others but let me tell you of a few. The Glebe Society chaired the Coalition of Glebe Groups for 2013 and you can see

what was done in *The Report of COGG Chair 2013* which is on the Glebe Society website (<http://tinyurl.com/ld8a2nv>).

The Glebe Society accepted an invitation to represent the community on the Sydney Superyacht Marina Community Consultative Committee. This should not be seen as an endorsement of the committee's manner of formation. It is likely that there will be more community consultative committees formed as development continues in the inner city and it seems reasonable that at least the conditions required of mining development in NSW should apply. The Sydney Superyacht Marina Community Consultative Committee did not.

We are working hard on a celebration of the heritage listing of the Glebe Island Bridge. This 'secret' bridge is not only significant in its heritage but also its potential to link Balmain and the City network for pedestrians, cyclists and light rail.

If you doubt that the Bridge is secret then 'stoppe ye one in three' and ask, 'by your long grey beard and rheumy eye now where doth Glebe Island Bridge be?'

John Gray

Meet the Committee – Lorel Adams

Over coming months, the *Bulletin* will introduce new executive committee members.

First cab off the rank is Lorel Adams who joined the Committee late last year.

I came to live in Glebe almost 10 years ago, after commuting to work at Sydney University early to beat the traffic, and then exploring Glebe for coffee shops. I found great coffee and a group of great people who are still friends.

Now I love being able to walk to work, the city, an endless choice of cafés and bars and the waterfront. I've given up my car, and discovered GoGet.

Bus and lightrail frequencies could be improved, and a ferry service would be great. I like the community involvement in street gardens and local parks, especially encouraging native plants. I think the Glebe Society is working to improve these areas, as

well as liaising with government to balance conservation with development.

My role on the Glebe Society management committee is to listen and learn, and with the enormous wealth of experience of many members, this is quite an eye-opener for me.

I continue to juggle part time work with keeping fit (walking, swimming and dancing), family (my children are both moving back to Glebe with their partners), getting a healthy dose of theatre, ballet, opera, film and music and travelling as much as time and money permit.

Lorel Adams
Committee Member

Welcome to new members: Christina Anthony & Sharon Margin; Barbara Schreiner; Prue Vines and Gae Pincus

Planning Report – Neil Macindoe

While you were on holiday

Planning sleeps for no-one, and there was the usual rush of applications over the holiday break, just advertised for a little longer, three of which required objections. The most controversial was the proposal by the owner (not the Bank, which sold the building some time ago) to redevelop the Commonwealth Bank site at 201-5 Glebe Point Rd. The proposal does not mention the Branch at all, so we don't know whether it will be relocated in one of the two shops proposed. Our objection to the City raised all these questions and asked the City to find some answers.

Mitchell St

I gave evidence on 28 January at an on-site Court hearing about a rear lane development proposal for the corner of Mitchell St and Derwent Lane. The Society was concerned about this proposal because it was at the rear of a Heritage Item, the former Waratah Hotel (1864), the oldest former hotel in Glebe with a completely intact exterior. It is also very close to the original land grant to Richard Johnson in 1790, and there is quite a lot of building stone on the site. Moreover, while there has been some development in the Bishopthorpe section of Mitchell St, it has been modest in scale and respectful of the Conservation Area.

This new proposal was for a pair of three storey terraces on a small site. We managed to reduce it to two storeys with room in the roof, reduce the site coverage, save the trees, and have the car entrance from Derwent Lane. While the final plans are still being negotiated, it is a significant improvement, and a good sign the City is prepared to fight in court for a better result.

Durham Court, 417 Glebe Point Road

The latest proposal came before the City Planning Committee on 18 February. There have been many iterations over the years, none of them satisfactory. This one was assessed independently, and the number of dwellings reduced from 64 to 54, with a number of other changes that reduced the impact on neighbours. Councillors voted for a site inspection. There will probably be further improvements as a result.

However, the developer is still claiming it is affordable housing, which attracts a considerable density bonus. I pointed out to the Councillors at the meeting that all of the out-of-character, bulky

buildings approved in the sixties for Glebe Point Rd had been supposed to be affordable, but all of them ended up commercial. There is still a question mark about affordable housing proposals for Glebe, and it is essential the City ensures they are indeed affordable.

We are asking members to reaffirm their demand that the Government keep its election promise and produce Planning Legislation that eliminates corruption and abuse of power

Proposed new Planning Laws

In November this controversial legislation was amended in the NSW Upper House to exclude the main benefits for developers. While it did not satisfy everyone, we should count this as a major success for the Better Planning Network, supported strongly by the Society, which has campaigned tirelessly for a return of planning powers to communities, as promised before the last State election.

However the proposed NSW Government legislation disempowers residents and benefits developers and, in its desperation regarding the Upper House amendments, the Government has threatened to use the Ministerial discretion enacted by the previous government, the same powers that brought discredit on the planning process in the first place, and caused the Independent Commission Against Corruption to denounce them.

Consequently we are asking members to reaffirm their demand that the Government keep its election promise and produce Planning Legislation that eliminates corruption and abuse of power by developers as much as possible, and this is why the Society has run street stalls and distributed leaflets and emails asking for your help.

The outcome is still uncertain, so it is important we keep up the pressure.



Neil Macindoe
Convenor, Planning

Community Notes – Janice Challinor

Justice Centre for Glebe

Stuart Davey, the CEO of the Glebe Justice Centre, sponsored by the Uniting Church, is continuing preparations for the opening of the Centre scheduled for later this year. This is a wonderful initiative that will contribute positively to improving community relations in our suburb. The Justice Centre is to be located in Uniting Church property on St Johns Rd.

Stuart will address the Glebe Society at the management committee meeting on Wednesday 12 March to seek support for the venture. If any member feels that they would like to contribute to this community-building initiative please come to the meeting, which is open to members. Alternatively, you could contact Stuart or me directly. Stuart is particularly keen to hear from members with previous experience in mediation and legal problem-solving (9518 9413 or stuart@glebejusticecentre.org.au).

The Glebe Society Ambassador Project

The Glebe Society Ambassador Project commenced in 2013. Our Ambassadors offer their services to local groups that would benefit from their experience and expertise. So far, our Ambassadors are involved with three groups: *Centipede* at Glebe School, *Glebe Schools Community Centre* and *The Glebe Community Development Project*. Here's an update on the Ambassador program.

Centipede: Ambassador Shirley Fitzgerald met with Kim Payne, Centipede Director, on several occasions in 2013. They are working together on a new grant application. Shirley and Kim are keen to encourage community-minded businesses to support the program. Currently, *Centipede* is fortunate to have the support of Galluzzo's, which generously contributes fruit to the program every week.

Glebe Schools Community Centre: Glebe Society Ambassador, Geraldine Barnes, has assisted Kate Brennan at the Centre with a number of grant

applications and acquittals. Kate is confident that the relationship will continue to flourish.

Glebe Community Development Project: Jan Macindoe, Glebe Society Ambassador for the Glebe Community Project is looking forward to getting her teeth into this job in 2014, as her services were not required by the Project in 2013.

While there has obviously been some hesitance in its gestation, this Ambassador Project now appears to be both useful to the service providers and meaningful for the Ambassadors. I'm sure our Ambassadors will continue to grow and develop their roles in 2014.

Perhaps our Ambassador program could be extended to other service providers – if appropriate Ambassadors are found. For example, as I mentioned earlier, the Glebe Justice Centre project is seeking assistance and advice from someone who is well-versed in mediation and community conflict resolution. This would be a great opportunity for a new Ambassador!

If you are interested in becoming an Ambassador, please contact me at 0401 505 657 or community@glebesociety.org.au.

The Glebe Youth Service (GYS)

Work on the former premises of GYS at 84 Glebe Point Rd took place during January and February. It was wonderful news to hear that the keys were handed back to GYS on 18 February. A great win for the Glebe community!

Friends of Tranby

The Glebe Society is talking with Friends of Tranby about joining forces to hold a special *Glebe Voices* event during NAIDOC Week in July – stay tuned!



Janice Challinor
Convenor, Community Development

From the Terraces – Liz Simpson-Booker

Chasing Shadows

The architect Louis Kahn (1901-74) has been quoted as saying 'the sun never knew how wonderful it was until it fell on the wall of a building'. Well, only an architect (with ego well intact) could or would say that! Estonian-born, Kahn worked in the US and

amongst his not insignificant commissions were the Kimbell Art Museum, Fort Worth, Texas and the Mellon Centre of Yale University.

What I find so delicious is what is implicit in Kahn's statement. Where the sun falls – on anything – it

creates shadows. With buildings, their very volume creates substantial shadows; however architects often impose features that create particular shadowy forms. These serve to accentuate aspects of the building or to create transient plays of light and shade.

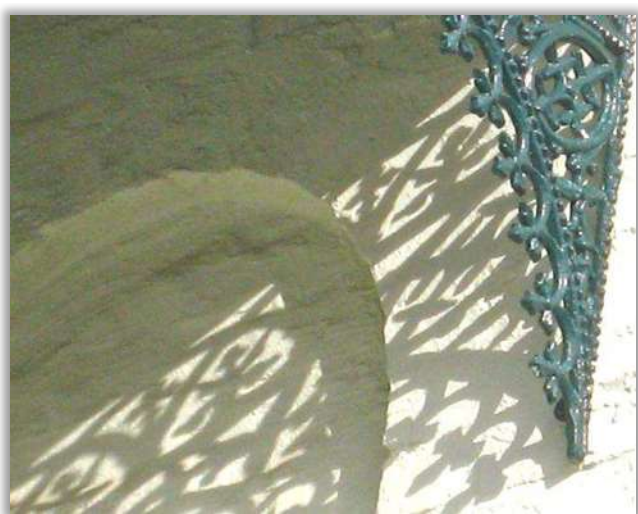
Yes, we in Glebe 'get' our Victorian terraces and Federation cottages and we 'get' details such as iron lace, chimneys, windows etc. But do we necessarily understand what effect the architect was striving for with string-courses, mouldings, bargeboards, colonnades, or rustication? Such details in our local buildings lend themselves particularly well to the play of shadows.

James Barnet used horizontal striations to achieve shadow effects. As the sun moves across the sky, the shadow from these channels or indentations deepens and accentuates the feature. This device can be seen in all three of Barnet's civic buildings in Glebe, ie, the Police Station, the old Court House and the old Post Office. In a not dissimilar way, modest timber cottages, with their overlapping weatherboards, offer changing perceptions of the depth of the boards as the sun moves across the sky.

The sun, as it touches iron lace or decorative woodwork, creates shadows which, over the course of the day, can turn from sharp iterations to lengthen, soften at the edges, elongate and distort to form surreal and transient patterns.

I have recently been rereading a quirky little book called 'In Praise of Shadows' by Jun'ichiro Tanizaki.

Tanizaki's essay, a paean to the old Japanese aesthetic, so different from our own, reminds us nevertheless to appreciate and celebrate the small wonders of our world. In our fast-paced environment of mass-marketing and mass-networking, it is easy to be overwhelmed by busy-ness and forget to cherish the tiny and the transient.



Victorian Iron Lace Work (Image: Erina Rayner)

Items from Glebe in the Historic Houses Trust Collection

In December 2013, three members of the Heritage Subcommittee visited the Caroline Simpson Library & Research Collection of the Historic Houses Trust (HHT). When HHT's Michael Lech spoke to Glebe Society members last October, he was asked about items from Glebe which might be in the collection of Sydney's Living Museums.

Michael searched the collection and for our visit kindly assembled a number of items, dating from the late 19th century to mid 20th century, for our inspection. These included a range of tiles, scraps of wallpaper, lino, soft furnishings, and a moulded metal cornice. The items came from houses in Toxteth Rd, Leichhardt St, Bellevue St, Mansfield St and St Scholastica's College.

Some of the items entered the collection through personal contact, some via enlightened owners and/or architects, some via judicious purchase, others serendipitously.

The Caroline Simpson Library & Research Collection, which is tucked behind the old Mint Building in Macquarie St, is open to anyone with an interest in the history of house and garden design and interior furnishing in NSW. The scope of the collection is broad, covering houses and gardens of all kinds and ranging from the 19th century to the present day.

Diggers Memorial

Readers will have noticed that the globes have been installed on the Diggers Memorial and are operational.

The interior of the Memorial is also now lit at night. Michael Woolley, from the City of Sydney, reports that the gate and clasp to replace the existing utilitarian chain-wire gate should be installed in about six months.



Liz Simpson-Booker
Convenor, Heritage

A terrace mystery

Dear Editor,

Liz Simpson-Booker, in her article on the increase in population of Glebe (*Glebe Society Bulletin*, No 10 of 2013, p.3), mentions the beautiful terraces at 433-445 Glebe Point Rd and the ‘opening-up’ of the verandas.

The restorations have also included the name plates of the seven houses and Liz gives the names but inadvertently omits 433.

The full list (north to south) is:

- ❖ ABNA
- ❖ BORO
- ❖ CAMA
- ❖ DIVO
- ❖ EDNA
- ❖ FAVO
- ❖ GAZA

I'm sure that many people have wondered about the sequence. Does it mean something? Something numerological, for instance?

From observation we know that:

- ✓ The names form the alphabetical sequence A to G
- ✓ Each name has four letters
- ✓ Each name has two consonants and two vowels
- ✓ Each name ends in a vowel
- ✓ The final vowels establish a sequence A, O, A, O, A, O, A

Is there a mystery here?

Anton Crouch



433-445 Glebe Point Rd, 2005, (Photographer: Maureen Sharpe City of Sydney Archives)

Who lived in your street? – Lyn Collingwood

William Aysh Adams (ca 1826-1895)

In areas of Glebe with low population density most of its bigger houses were known by name before they were numbered, and they were often christened in memory of distant places – Jarocin, Penzance, Llangollen, Kew Cottage – or in honour of family members – Edith Villas, Florence Villa, Brucedale, Douglasdale, Allandale, Floraville, Marionville, Ellenville, Florenceville, Elsieleigh. The building on the corner of St Johns Rd and Westmoreland St (now numbered 144a St Johns Rd) in the 20th century functioned as a private house, a hospital and a



114a St Johns Rd (image: Phil Young)

sculpture gallery, and in the 21st century as a rehabilitation clinic *Kathleen York House*. Its original name was *Ayshleigh*.

William Aysh Adams was one of three carpenters (most of the other 210 passengers being agricultural labourers) on board the immigrant ship *Julindur* which landed in Sydney on 5 April 1849. With his wife Susan and week-old son William, one of three babies born on the voyage from Plymouth, he went straight to Goulburn where three more children were born: Elizabeth 1851, Susan (1853-1938), John 1855 and Mary Ann (1857-1942). Adams had moved to Sydney by 1879 when his youngest daughter married Thomas B Nosworthy at the Glebe Wesleyan Church, and by 1882 he had settled as a ‘gentleman’ of means at *Ethelville* an eight-roomed house at 9 St Johns Rd adjacent to a Congregational Church. His solicitor was Mark Mitchell, of Glebe’s D Mitchell & Co. mercantile family. (Glebe’s Michael David Mitchell was the subject of a *Who Lived...* article in the Glebe Society’s *Bulletin* 4 of 2011.)

When William Aysh Adams died at age 68 on 13 January 1895 he left an estate of more than £21 000; its beneficiaries his wife and two youngest daughters. His widow died aged 76 just over a year later, on 3 April 1896, and Susan junior (married to William Bates and living at Granville) and Mary Ann Nosworthy inherited a considerable fortune (they ended up owning a lot of land on the main street of Springwood).

After their marriage the Nosworthys lived at various places in Glebe: *Belmore House* Mount Vernon St, *Pymont Bridge Rd*, *Carlton House* Derwent St. It is almost certain that *Ayshleigh*, its name in honour of its benefactor and first recorded as 74 Westmoreland St, was built with Mary Ann's inheritance. By 1897 she and Thomas were living in the six-bedroom house with their three children: Sydney Arthur (1880-97), Lilly May (1882-1966) and Victor Aysh Adams (1892-1951). On 17 April 1897 Sydney, like his father employed by D Mitchell & Co, drowned in a waterhole in the Lane Cove River while on a camping holiday with Glebe friends James Burfitt, Thomas Roberts and Horace Shorter. An inquest at Glebe Town Hall brought a finding of accidental death; Sydney's funeral cortege left *Ayshleigh* for the Wesleyan section of Rookwood cemetery.

Like his wife, Thomas Nosworthy (1855-1911) was born in Goulburn. The son of Ann and William Nosworthy, a Merrilla farmer who patented a potato-digging machine, Thomas was employed by Davies, Alexander & Company's Australian Stores in Goulburn before, at age 22, moving to Sydney to work as a bookkeeper with D Mitchell & Co. where he rose to the position of managing director. He owned a steamer, the *Pioneer*, (sold for £400 to Edward Bayly and architect Cyril Blacket) and kept stables on Old Parramatta Rd (one of his horses burned to death when the wood and iron structure was destroyed by fire in 1903). While living at *Ayshleigh* Nosworthy played lacrosse, was involved

with the Forest Lodge *Ayshleigh* cricket team and kept valuable racing pigeons. Appointed a JP in 1900, he was a Glebe alderman 1899-1907, Glebe mayor 1902-5, on the committee of the Boys' Brigade, and vice president of the Glebe Rowing Club and of the Glebe Benevolent Society. He took a European holiday in 1904 and again in 1909, by which time the family had moved from *Ayshleigh* whose contents – including two pianos, a tennis net, a library, a lawn mower and a breech loading gun – had been auctioned in 1906. The Nosworthys took up residence in the Grosvenor Hotel Church Hill – the venue for daughter Lilly May's society wedding to Edwin Ernest Morgan in 1910, and the next-of-kin address given by son Victor when he enlisted in the Light Horse as a stockman in 1915.

Thomas Nosworthy died aged 56 at Lewisham Hospital on 3 September 1911 and was buried in the Wesleyan section of Rookwood cemetery. His widow was interred with him 31 years later.

After the Nosworthys vacated 144a St Johns Rd it functioned as *Ayshleigh Private Hospital* until the late 1920s, its matrons including Annie Gillespie, Dora Eleanor Warrington and Katie Rees. For at least a decade from 1981 the building housed Celia Winter-Irving's Irving Sculpture Gallery, the first Australian gallery devoted entirely to sculpture.



Lyn Collingwood

Sources: Births, deaths, marriages indexes NSW; Cemetery records: Rookwood Old Wesleyan; City of Sydney website: aldermen; Electoral rolls; *Evening News* various issues including 12.9.1885; First World War embarkation rolls; *Sand's Directories*; *Soul in Stone* catalogue 1986; State Records NSW immigration indexes; *Sydney Morning Herald*, various issues including 6.9.1911

Natural Glebe – Jan Macindoe

A good year for Glebe parks

The planning and creation or upgrading of a park is a slow business. When the final stage of the Foley Park upgrade is achieved this year it will be seven years since the process began, as Bobbie Burke reminded me. Even so, 2014 will be a good year for seeing a number of park projects completed.

Foley Park

The upgrading of Foley Park began in 2007 and has been undertaken in several stages. Last year saw the refurbishment of the Diggers Memorial, with the final piece, a new gate to protect the internal space,

to be added soon. The final stage of the upgrade was approved by Council late last year and mainly commemorates the original building on the site – Hereford House (1829, demolished 1929). Michael Woolley, project manager Open Spaces, described the main works involved thus:

The works include a paved area on the upper terrace to demarcate the outline of the veranda of the former Hereford House. A timeline engraved in the paving and precast concrete seating elements with interpretive signage including text and historic photographs. Picnic tables, paving strips and areas of decomposed granite gravel paving on the upper

terrace to demarcate the footprint of the former Hereford House and the pergola on the eastern veranda of the former Hereford House.

According to the papers which went to Council, the work should commence in February and be completed by June.



St James Park

Work on the upgrade of St James Park has commenced and is expected to be completed by 2015. An outline of the work involved was given in a press release by the City in November. See <http://www.sydneymedia.com.au/a-more-playful-and-accessible-st-james-park/>.

Key points are: replanting of tea tree and bottlebrush grove; open grass terrace; upgraded park furniture and lighting. The children's adventure playground is described thus:

The new adventure playground is aimed at children aged up to seven and includes a timber tree-house deck built around an existing celtis tree with a 'play serverly shopfront' where children can play shopkeeper. Interpretative drawings by local school children about the natural environment will be incorporated into the timber deck.

Upgraded toilet and amenities building described thus:

The tennis facilities will have improvements for people living with disabilities, including the introduction of an accessible toilet and change rooms. The timber filigree and brick amenities building provides a sheltered seating area for tennis groups, parents and carers, and will be oriented towards the tennis courts to improve viewing.

Waterfront Walk – Sydney Secondary College extension

Locals will have noticed the major earthworks underway beside Sydney Secondary College (formerly 'Glebe High'). Plans were available for consultation last year and can still be seen in Glebe Library. This final section of the Glebe Waterfront Walk will mean that the whole of the Glebe waterfront will be accessible to pedestrians and cyclists. There will still be the barrier of the section at the head of Blackwattle Bay, along Bridge Rd, to negotiate before a complete connection to the Fish

Markets. The current extension will be completed by the end of this year.

Harold Park

The final stage of planning for the new park, beside the cliff in the Harold Park development, will go to Council as a development application in the next couple of months. Construction of the park is expected during the second half of the year.

Explore Glebe on the go, at www.glebewalks.com.au

The Glebe Walks website is now formatted for smart phones and tablets, making it easy to use while you are out and about. The website was launched in 2011 and now covers six themed walks around Glebe, including photos for each stop along the walk, maps and links for more information. More walks will be added over time. The new 'smart phone friendly' version has been supported by a grant from the City of Sydney.

Explore new routes, or look into the history, architecture, colourful characters and geology of our local area while you walk the dog, or just 'go for a stroll'. Or you might just be curious about a particular building or street – take your smart phone or tablet and see what you can find!

The Glebe Walks website is also a great resource for visitors and tourists.

Jan Macindoe
Convenor, Environment



Explore hidden corners of Glebe with the Glebe Walks website – William Carlton Gardens (image: Jan Macindoe)

From the Blue Wrens – Jeanette Knox

The Group held its first meeting for 2014 in late January. Convenor Andrew Wood will be overseas for six weeks from early February, and I will act as convenor until his return.

The first activity for the year will be a Celebration of Parks Week event, organised jointly by the City of Sydney, Friends of Orphan School Creek Landcare Group and the Glebe Bushcare Group. Members of the Society and friends are invited to join in a community planting to increase the biodiversity and habitat at Forest Lodge.

Meet on Wednesday, 5 March for a 9.30 am start, at the playground at Wood St, Forest Lodge. Please wear covered shoes, hat and gloves and bring along drinking water.

See you there.

Jeanette Knox

Acting Convenor, Blue Wrens

Note: The Glebe Bushcare Group usually meets every Wednesday morning at about 8.30am. All are welcome. Contact Sue Copeland (9692 9161).

Recent happenings in 2037



Pic of the Month: The rooftop of the new eco-house recently built in Forest Lodge (image: greenroofsaustralasia.com.au)

vegetables to *Centipede* – donated by Galluzzo's. She has also assisted with the organisation of Mitchell St Fete and various Glebe Society events.

Her active participation in community forums organised by the community and City of Sydney together with representations to various Government Departments for the benefit of the Glebe community often goes unnoticed.

Jan Wilson

Australia Day Award 2014

Susie Cleary

Congratulations to Susie Cleary, OAM PSM, Glebe Society member, for being awarded the Medal of the Order of Australia in the Australia Day Honours List.

Susie has lived in Glebe for over 30 years and has been a long-time member of the Glebe Society. Her participation and activism in community groups certainly makes her worthy of this award.

She has been a member of the Board of *Centipede* – Before and After School Care at Glebe Public School, Chair of Wentworth Park Sporting Complex, Chair of Glebe Point Residents Group, Committee member, Wentworth Park Glebe /Ultimo Community Games, member of FLAG (Forest Lodge and Glebe Community groups), member of COGG (Coalition of Glebe Groups) member of CCL (Council for Civil Liberties).

In addition, Susie has taken responsibility for fundraising for *Centipede* and liaising with the community and City of Sydney as well as the organisation and delivery of weekly fruit and



Susie Cleary. (image: Jan Wilson)

Fr. John Neill, OAM

Congratulations also to Fr. Neill of St James Parish Glebe, who received an Australia Day Award for services to education and the Catholic Church in Australia. Fr. Neill has a long connection with the University of Notre Dame, including as a Chaplain for many years.



Café Otto on Australia Day this year (image: Anita Ao, <http://saltskinned.blogspot.com.au/2014/01/my-heart-is-beating-like-jungle-drum.html>)

Café Otto

A man – apparently not the owner - has been arrested over the most recent fire at the ill-fated Café Otto. This is some of what the NSW Police said in a press release on 5 January:

A man will face court next month charged over an alleged arson offence following a fire at a Glebe café late last year ... Detectives attended a home in Carlton about 9.15pm yesterday (Thursday 16 January 2014), where they arrested a 30-year-old man. The man was taken to Kogarah Police Station and charged with dishonestly for gain damage property by fire. He has been granted conditional bail to appear before Kogarah Local Court on Tuesday 11 February, 2014.

Politics in the Pub returns to Glebe

On Thursday 6 February, *Politics in the Pub* (PinP) returned to its original home at the Harold Park Hotel, Glebe, after an absence from there of 12 years. The speaker for this return evening was Gordon Weiss, journalist and former United Nations official, who spoke about the last days of the civil war in Sri Lanka and considered the Australian government's relationship with the Sri Lankan government at that time. The evening was a great success in every way.

PinP was launched on the first Friday in April 1988 in the original Harold Park Hotel. The format was the same as it is today: two speakers, expert in their field, followed by 45 minutes of Q & A. The topic that night in 1988 was 'Where is Labor Going?' Speakers were Senator Arthur Gietzelt, then leader of the left in the Parliamentary Labor Party, and Professor Julian Disney from the Centre for Policy Development at UNSW. It is sobering that this topic is just as relevant today. The meeting was packed to the rafters and this encouraged us that we were delivering a much needed service to the community.

PinP was established by a small group of independent left academics and social activists who wanted to hold a weekly program – open to all members of the public – where expert speakers would present informed analysis of the key issues of the day. We drew on academics, representatives of not-for-profit organisations, journalists, parliamentarians, social action groups such as environmental and refugee support groups.

We also wanted a congenial physical setting where people attending the meetings could socialise and network over a drink or dinner before or after the meeting and so facilitate the growth of a community of better informed people.

The Harold Park Hotel, which was then the cultural hub of progressive Sydney, was the perfect location for us. In the 12 years of our time with the hotel, we did deliver on our aims in a most harmonious relationship with the hotel and we became known all over Sydney. We also expanded our aims to support those social organisations who fight for justice for the disadvantaged such as refugees, Indigenous Australians, the poor and the unemployed, as well as the environment.

All involved with the program do it on a voluntary basis, supported only by a modest non-obligatory entry donation. This means no one is excluded because of finances and we preserve our independence. We have now been conducting meetings for over 26 years, only taking a break during the Christmas holiday period.

In 2001, totally without warning, the Harold Park Hotel was sold to developers to build serviced apartments. With only a few weeks' notice we had to find another home. We moved four times to short-term venues until we were accepted by the Gaelic Club in Surry Hills. We had a happy stay there from mid-2004 to November 2013. History repeated itself when the Club said their policy had changed and they needed every night to be available for income-generating music gigs; and, with a few weeks' notice, we left the club at the end of our 2013 program in late November.

I approached William Ryan, owner and mine host of the wonderfully built Harold Park Hotel with a new welcoming interior, and enquired whether we could return. William immediately welcomed us back. William has a vision for the Pub which is in alignment with our philosophy of the hotel again becoming the cultural hub of 'non-corporate'

Sydney; with different nights devoted to PinP, comedy, poetry and, perhaps, philosophy.

The next PinP is on Thursday 6 March. All details of forthcoming programs, plus detailed information about the Committee, how to contact us and archives of past programs are on our website: www.politicsinthepub.org.au/. Up-to-date information is also on Facebook: www.facebook.com/groups/politicspub.

Win Childs

Coordinator, Politics in the Pub

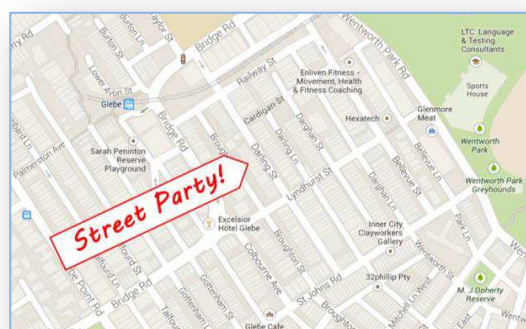


Politics in the Pub returns to the Harold Park Hotel (image: William Paauwe)

Darling St Street Party

We, the residents of Darling St, revived our traditional Australia Day weekend Street Party - celebrating neighbours! Not having had one for a few years, it was noticeable that there had been some changes of residents and an amazing increase in the number of young children. Very easy to organise – a flyer was all that was required requesting everyone to bring something to share to eat and drink. We wore name tags and had a BBQ. The party was well attended and we all met new people. The good burghers of Hereford St used to do the same on the same day and it is a great way to meet your neighbours.

Jan Wilson



Out and About

Glebe Voices

Come and hear Åsa Wahlquist, Walkley award-winning journalist specialising in rural affairs.

When and where? Wednesday 2 April at 6pm; Blackwattle Bay Café (*Bellevue* in Blackwattle Bay Park), 55 Leichhardt St, Glebe.

The Carnivore's Dilemma:

Can we Save the Planet by Eating Less Steak?

Åsa Wahlquist has worked for some 30 years writing and broadcasting on Australia's agricultural issues including food production, drought and climate change for the ABC, *Sydney Morning Herald* and *The Australian*. She is the author of *Thirsty Country*, published by Allen & Unwin, in 2008 about Australia's water crisis. Tim Flannery described the book as 'a brilliant and incisive account of one of the most pressing issues of our time'.



Åsa has won a number of awards for her work in radio, TV and in print. They include a Walkley Award, in 1996, for a three part series, published in *The Land*, called *The Gutting of NSW I*; the Australian Government Peter Hunt Eureka Prize for Environmental Journalism in 2005; the European Community Journalist Award in 1993; and several Dalgety Awards and McKellar Awards for rural journalism.

In this session of *Glebe Voices*, Åsa will open up informal discussion on the debates around greenhouse gas emissions, especially in relation to meat production, which she considers has been misrepresented in the mainstream media. Åsa will discuss whether it would be more responsible for conscientious Australians to eat steak than to eat tofu.

Glebe Voices, a series of talks by local guest speakers, is an initiative of The Glebe Society. The Blackwattle Café is making the space available as part of their support for Glebe community use.

Thirsty Thursdays

Members and friends are invited to meet in restaurants in and around Glebe, usually on the first Thursday of each month at 7pm, to eat and talk with other people who live in Glebe. We visit a different restaurant each month, varying cuisines. Put these dates in your diary now.

- ❖ On Thursday 6 March we will have dinner at *Naggy's*, 333b Glebe Point Rd.
- ❖ On Thursday 3 April we will enjoy an Italian meal at *Pastabella*, 89 Glebe Point Rd.
- ❖ And on Thursday 1 May we will return to *La Boheme*, 199 Glebe Point Rd.

Please email thirstythursday@glebesociety.org.au or ring me on 9660 7066 by the Wednesday before the dinner to let me know if you are coming, or if you are likely to be late.

Edwina Doe

Lunches with Bite: Cirque du Seniors @ Glebe Library

Friday, 14 March 2014; 12 noon to 1 pm

Roll Up, Roll Up! And get some comfy gear on! Take this lunchtime workshop and try your hand at

some circus skills. We are never too old to try something new and with the help of Aerialize Sydney Aerial theatre we'll get you stretching, juggling, hooping, manipulating and having a blast! So get your game face on for Seniors Week this year and test out your circus potential!

For more information and to book, go to:

[http://www.eventbrite.com.au/e/lunches-with-bite-cirque-du-seniors-
glebe-library-tickets-10074634503?aff=eorg](http://www.eventbrite.com.au/e/lunches-with-bite-cirque-du-seniors-glebe-library-tickets-10074634503?aff=eorg)



Players in the Pub

Next in our popular series of moved and costumed readings at the **Roxbury Hotel**, St Johns Rd / Forest St, Forest Lodge:

Il burbero benefico (The good-natured grump)

A comedy by Carlo Goldoni, directed by Peter Talmacs.

When? 7pm Monday 17 March. Free admission. The kitchen (new menu) is open for orders from 5 pm.

Lyn Collingwood

Art Month Sydney in 2037



Each March, *Art Month* celebrates the vibrancy and diversity of contemporary art in Sydney by throwing open the gallery doors and presenting over 200 exhibitions and events.

Below are some Glebe connections to Art Month, starting with an exhibition at the local *Salerno Gallery*

Down the Rabbit Hole by Sal Higgins

Salerno Gallery in association with *Art Month Sydney* is presenting *Down the Rabbit Hole*, a new solo exhibition by Sal Higgins. An opening night reception will be held on Thurs 6 March, 6-8pm, 70 Glebe Point Rd.

The exhibition concludes on 23 March. For more information, see the *Salerno Gallery* website: <http://www.salernogallery.com/>



Art by Sal Higgins (image:Salerno Gallery)



The Love of Two Oranges 1969 oil on canvas by Glebe artist John Ogburn is part of the Three O's exhibition at Manly. (image: Gallery Red)

The Three O's: Orban, Olsen And Ogburn

Also for Art Month Sydney, an exhibition featuring the work of the late John Ogburn, (1925-2010), Glebe artist, is being held in Manly. The creative path of Glebe artist and Society member, John Ogburn is being re-assessed together with fellow artists, Desiderius Orban and John Olsen, in The Three O's show at Manly Art Gallery.

The 'Three O's', as Orban called them ... exercised considerable influence towards the acceptance of more radical approaches to art in the fifties and early sixties in Sydney, and thus in Australia. (Hugh Speirs, art writer).

This touring exhibition explores the legacy of Desiderius Orban and that of two of his students – John Ogburn and John Olsen. Both later taught at Orban's studio before blazing their own trails in Australian art.

The exhibition, coordinated by Orange Regional Gallery, opens Friday 21 March and runs until 27 April. The curator, Emma Collerton, will be giving a floor talk on Sunday 23 March at 3pm.

For more information, check out:

<http://www.artmonthsydney.com.au/exhibitions/the-three-os-orban-olsen-and-ogburn/>

Art at Galluzzo's Deli

Mercia Bush, (Glebe Society member) winner of the People's Choice Prize at 2013 Glebe Art Show has six of her paintings on display at Galluzzo's Deli. They are all for sale. It is also an opportunity to visit Glebe's newest gem.

Disbound

Gallery Red presents *Disbound*, an artist book exhibition featuring works that explore the realm of the artist book through prints, drawings, sculptural statements and paper engineering.

Opening night drinks with the artist take place on Friday 28 February 6-8pm.

Dates: 28 February to 18 March. **Hours:** Mon-Fri, 10am-5pm. Sat, 10am-3pm.

Location: Gallery Red, Shop 11, 131-145 Glebe Point Rd, Glebe. **Phone:** 9692 0030



Water Lily by Julie Bookless. (image: Gallery Red)

Illusion

Works by Irene Charnas, Ingrid Tristram.

Inner City Clayworkers Gallery Co-op.

26 February - 9 March.

To be opened by Councillor Robyn Kemmis, Deputy Lord Mayor City of Sydney, 6pm Wednesday 26 February.

Cnr St Johns Rd & Darghan St, Glebe; Ph/Fax 9692 9717; Gallery hours 10.30am - 5pm

info@clayworkers.com.au;

www.clayworkers.com.au



'Illusion' by Irene Charnas. (image: Clayworkers Gallery)

For Your Calendar

Wed 5 Mar, 9.30am. *Community planting*, Playground at Wood St, Forest Lodge.
 All other Wednesday mornings, 8.30am. *Glebe Bushcare Group*. Contact Sue Copeland (9692 9161).
 Wed 5 Mar, 9.30am. *Blue Wren group planting*, Playground at Wood St, Forest Lodge.
 Thurs 6 Mar, 6.30pm to 8.15pm, *Politics in the Pub*, Harold Park Hotel.
 Thurs 6 Mar, 7pm. Thirsty Thursday, *Naggy's*, 333b Glebe Point Rd.
 Wed 12 Mar, 7pm, Management Committee meeting, Glebe Town Hall.
 Thurs 13 Mar, 6.30pm to 8.15pm. *Politics in the Pub*, Harold Park Hotel.
 Mon 17 Mar, 7pm. Players in the Pub, *Il burbero benefice*, Harold Park Hotel.
 Wed 2 Apr, 6pm, Glebe Voices, Blackwattle Bay Café.
 Thurs 3 Apr, 7pm. Thirsty Thursday, *Pastabella*, 89 Glebe Point Rd.
 Wed 9 Apr, 7pm, Management Committee meeting, Glebe Town Hall.
 Thurs 1 May, 7pm. Thirsty Thursday, *La Boheme*, 199 Glebe Point Rd.
 Wed 14 May, 7pm, Management Committee meeting, Glebe Town Hall.

The Glebe Society Inc Established 1969

Management Committee

| | | | |
|-----------------------|--------------------|--------------|-----------------------------------|
| President | John Gray | 02 9518 7253 | president@glebesociety.org.au |
| Vice President | Jan Wilson | 0408 207 784 | vicepresident@glebesociety.org.au |
| Past President | Mairéad Browne | 02 9552 2888 | pastpresident@glebesociety.org.au |
| Secretary | Di Gray | 02 9518 7253 | secretary@glebesociety.org.au |
| Minutes Secretary | Rosalind Hecker | 02 9660 7056 | minutes@glebesociety.org.au |
| Treasurer | Tess Nicholls | 0418 206 807 | treasurer@glebesociety.org.au |
| | Lorel Adams | 02 9571 1113 | lorel@glebesociety.org.au |
| | Chris Blair | 0414 550 382 | chris@glebesociety.org.au |
| | Rosalind Hecker | 02 9660 7056 | minutes@glebesociety.org.au |
| | Jock Keene | 02 9571 4078 | jock@glebesociety.org.au |
| Bays and Foreshores | Lesley Lynch | 02 9660 5084 | bays@glebesociety.org.au |
| Blue Wrens | Andrew Wood | 02 9660 6104 | bluewrens@glebesociety.org.au |
| Communications | Bill Simpson-Young | 0411 871 214 | bill@glebesociety.org.au |
| Community Development | Janice Challinor | 0401 505 657 | community@glebesociety.org.au |
| Environment | Jan Macindoe | 02 9660 0208 | environment@glebesociety.org.au |
| Heritage | Liz Simpson-Booker | 02 9518 6186 | heritage@glebesociety.org.au |
| Planning | Neil Macindoe | 02 9660 0208 | planning@glebesociety.org.au |
| Transport & Traffic | Murray Jewell | 0405 921 945 | transport@glebesociety.org.au |

Working Groups & Contacts

| | | | |
|------------------------|------------------------|--------------|-------------------------------|
| Archivist | Lyn Milton | 02 9660 7930 | milton.lyn@gmail.com |
| <i>Bulletin</i> Editor | Virginia Simpson-Young | 0402 153 074 | editor@glebesociety.org.au |
| Events Coordinator | Erica Robinson | 02 9692 8995 | events@glebesociety.org.au |
| History | Lyn Collingwood | 02 9660 5817 | lyncoll@optusnet.com.au |
| History of Glebe | Max Solling | 02 9660 1160 | |
| Website Coordinator | Phil Young | 02 9692 9583 | webmaster@glebesociety.org.au |

Highlights this issue

| | |
|--|----|
| The Divide is Narrowing ... Glebe School's successful student engagement | 1 |
| Volunteer Needed: Website Content Coordinator | 1 |
| President's Column – John Gray | 3 |
| Meet the Committee – Lorel Adams | 3 |
| Planning Report – 'While you were on holiday' ... | 4 |
| Community Notes – Justice Centre for Glebe | 5 |
| From the Terraces – Chasing Shadows | 5 |
| A terrace mystery | 7 |
| Who lived in your street? – William Aysh Adams (ca 1826-1895) | 7 |
| Natural Glebe – A good year for Glebe parks | 8 |
| From the Blue Wren Group | 10 |
| Australia Day Awards 2014 | 10 |
| Café Otto | 11 |
| Politics in the Pub returns to Glebe | 11 |
| Out and About | 12 |



Bulletin No.1 of 2014 (March 2014)

The Glebe Society Inc

PO Box 100 Glebe NSW 2037

**Postage
Paid**

Membership of the Glebe Society

Individual member: \$45
Joint (2 people, one address): \$55
Household: \$60
Concession (student or pensioner): \$20
Institution or corporate: \$110

How to join

- ✓ download a membership form from www.glebesociety.org.au; or
- ✓ write to the Secretary at PO Box 100, Glebe, 2037; or
- ✓ email secretary@glebesociety.org.au.



Work continues on the Foreshore Walk in front of Blackwattle High School (image: Bruce Davis)

Views expressed in this *Bulletin* are not necessarily those of the Glebe Society Inc.